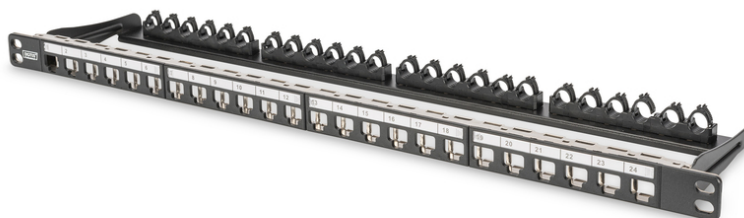


DIGITUS Modular High Density Patch Panel, shielded

DN-91422
EAN 4016032343295



Modular Patch Panel, shielded, 24-port label field, 0.5U, rack mount, black RAL 9005

The DIGITUS® 24-port 0.5U Patch Panel offers a high density. As the panel is only 0.5U in height, it allows to present 48 ports on 1U (2 panels with 24 ports each) which can be installed.

- Layout Keystone Entry: Double-row
- Area of application: 483 mm (19") cabinet
- Norms: ISO/IEC 11801 3rd Ed., EN 50173-1, EIA/TIA 568-C
- General properties:
- Suitable for 483 mm (19") cabinet mounting
- Suitable for shielded Digitus® Keystone Modules and Couplers
- Central ground connection
- Plastic label field

- Technical properties:
- Housing material: 1.5 mm SPCC cold rolled stell sheet, powder-coated
- Material standard: EN 10 130(1991), BS 1449, NFA 36/401, DIN 1623, UNI 5866, UNE 36-086, SIS, JIS G 3141, ASTM, SAE, NFA 36/401
- Grounding bar material: Galvanized steel
- Physical properties:
- Operation temperature: -20° C to +70 °C (ISO/IEC 11801, EN 50173-1, ANSI/TIA/EIA 568 C)
- Colour: Black RAL9005
- Color: black, RAL 9005
- Ports: 24
- Units: 0

Logistics						
	Number (pcs)	Weight (kg)	Depth (cm)	Width (cm)	Height (cm)	cm³
Packaging Unit Carton	10	6.30	55.00	38.00	18.00	37.60
Packaging Unit Inside	1	0.63	3.00	53.00	18.00	2.90
Packaging Unit Single	1	0.63	3.00	53.00	18.00	2.90
Net single without Packaging	0	0.63	0.00	0.00	0.00	0.00

More images:

