

DIGITUS DIGITUS Network Cabinet Unique Series - 600x600 mm (WxD)

DN-19-22U-6/6-B-1
EAN 4016032332220



22U network rack, Unique 1164x600x600 mm, color black (RAL 9005)

The network cabinets from the Unique series were developed for especially convenient and flexible network cabling. Inlets in the roof and floor equipped with brushes (starting with 26 rack units and a cabinet width of 800 mm), a sliding inlet in the floor structure with foam rubber seal and brush management panels on the back above and below the rear door (starting with 26 rack units) enable versatile use in a wide range of application scenarios. Vertical cable channels with brackets installed next to the profile rails (starting with a cabinet width of 800 mm) round off the design. An offset, removable cover with ventilation slits ensures enhanced air circulation. This features a special design for easy mounting of a fan module. Two pairs of galvanized 483 mm (19") profile rails labeled with rack units readable in both directions are installed on the inside. Their depth is adjustable and they are connected to additional depth bars in the cabinet. Each cabinet is made of up to 1.5 mm thick sheet steel. Coloring is done with electrostatic powder coating in the standard colors gray (RAL 7035) or jet black (RAL 9005). Side walls and doors that can be locked or removed in a modular design improve accessibility. The door hinges can be switched. Furthermore, the cabinets can be completely dismantled if necessary due to their collapsible design.

The DIGITUS® Unique Series is made for high demand IT-Infrastructure Solutions - designed and developed on highest standard in Germany

- Safety class rating IP20
- Lateral metal struts front door with safety glass
- Lock system with pivot lever on front door (ready for profile half cylinder; adapter included)
- 120° door opening angle on front- and rear doors
- Single wing opening rear door

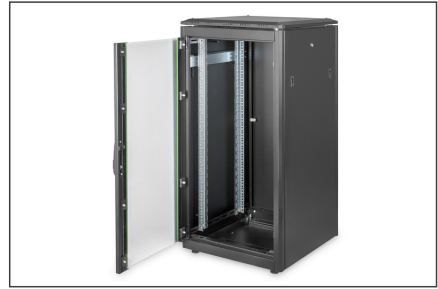
- 1-point-locking-mechanism on all doors
- Side panels are lockable and removable
- incl. 4 pieces of leveling feet already pre-configured under the rack
- 483 mm (19") profile rails mounted on the front- and rear side inside of the rack, galvanized
- 483 mm (19") profile rails are adjustable in depth and with height unit marking
- Sliding cable entry with rubber sealing on the base
- Special roof construction for fan unit with added lid which can be unmounted
- Several earthing points for rack components
- Incl. installation set (screws, cage nuts, washers)
- Rack is completely mounted
- Equipment mounting depth min.-max.: 363-543 mm
- Cabinet type: Network cabinet
- Color: black, RAL 9005
- Depth: 600 mm
- Front door: Glass door, single opening
- Load capacity: 800 kg
- Rear door: Steel door, closed, single opening
- Side panels: Both sides
- Units: 22
- Width: 600 mm
- IP protection class: IP20
- Mounted: yes

Package contents

- Earthing wire set
- Installation set (screws, cage nuts, washers)
- Installation Kit for Profile Half Cylinder
- 2 x keys

Logistics						
	Number (pcs)	Weight (kg)	Depth (cm)	Width (cm)	Height (cm)	cm³
Packaging Unit Carton	1	48.90	65.00	65.00	121.40	512.90
Packaging Unit Inside	1	48.90	65.00	65.00	121.40	512.90
Packaging Unit Single	1	63.40	65.00	65.00	121.40	512.90
Net single without Packaging	0	58.00	60.00	60.00	116.40	419.00

More images:



DN 19 22U/6/GB-1 // Network Cabinet Unique Series, 22 U, 600x600mm (WxD)

Hauptmerkmale
Key Features

- Vertical cable management ducts**
 - with shelves
 - on cabinets from 800mm width
- Steel front door with safety glass**
 - 130° door opening angle
 - compatible ready for profile rail cabinet
- Side panels**
 - lockable and detachable

Roof

- special construction for fan unit assembly
- top cover with distance screens for optimized air flow

482.6 mm (19") profile rails

- 600kg load capacity

Cable guides

- top and bottom left and right stop and based on cabinets from 800mm width
- sliding entry with hares cover on the base
- handles on top and base part of steel door (from 26U)