

# DIGITUS Industrial mini GBIC (SFP) Module, 1.25 Gbps, 20km

DN-81011  
EAN 4016032307587



### 1.25 Gbps SFP Module, Singlemode, Industrial vers. LC Duplex Connector, 1310nm, up to 20km

The DIGITUS® mini GBIC (SFP) transceiver modules offer highest quality and reliability. Whether from switch to switch, converter to switch, converter to converter or any else application: The wide product range of DIGITUS® modules makes possible a flexible usage of the fiber technology. The conformity to the MSA (Multi Source Agreement) standard ensures a compatibility to third party manufacturers.

#### The plug and play fiber connection

- Mini GBIC SFP (Small Form Factor Pluggable) module
- Compatible with the following manufacturers: Allied Telesis, Allnet, Avaya, CISCO, D-Link, Edimax, FINISAR, FORCE 10, Gigamon, Intelinet, KTI Networks, Level One, PLANET, Tenda, TP-Link, TRENDnet, Mikrotik, ENTERASYS, RIVERSTONE, Unifi, Ubiquiti, ZyXEL, ZTE
- High quality and excellent reliability
- 1.25 Gbps Maximum Data Rate
- Compliant to IEEE 802.3z Gigabit Standard
- Class 1 laser product compliant with EN 60825-1
- Easy plug-and-play installation
- MSA (Multi Source Agreement) compliant

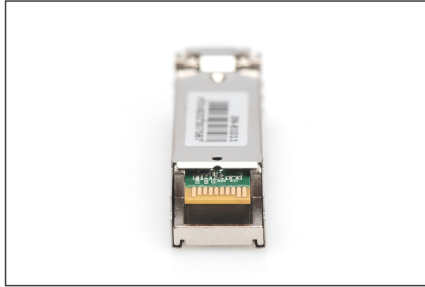
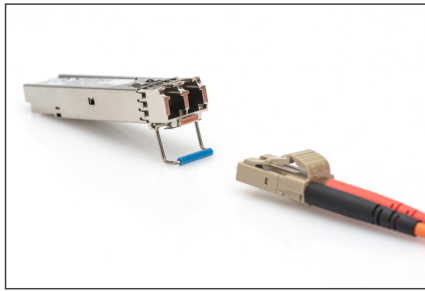
- Hot pluggable
- Connector: 1x LC Duplex
- 1000Base-LX - For Long Haul
- Wavelength: 1310nm
- Transmission power: minimum -8 dBm, maximum -3 dBm
- Sensitivity receiving power: minimum -24 dBm
- For a Distance of up to 20km
- Suitable for 09/125µm Singlemode Fiber Cables
- Safe fast-locking mechanism
- 3.3V power supply
- Operating temperature: -40 °C - +85 °C
- Mode: Singlemode
- Connector: LC
- Distance (km): 20
- Wavelength: 1310 nm
- DDM Support: no
- Broadcasting Mode: Unidirectional
- Manufacturer compatibility: Universal (MSA), Cisco
- Ethernet speed: Gigabit

#### Package contents

- SFP module

Logistics						
	Number (pcs)	Weight (kg)	Depth (cm)	Width (cm)	Height (cm)	cm³
Packaging Unit Carton	240	8.50	50.00	29.00	54.50	79.00
Packaging Unit Inside	30	1.06	7.00	20.00	30.00	4.20
Packaging Unit Single	30	0.04	3.00	12.00	9.00	324.00
Net single without Packaging	0	0.04	0.00	0.00	0.00	0.00

More images:



SFP Modules							
Product Number	DOM Code	Speed	Distance	Connector	Mounting	Operating Temperature	Industrial Version
<b>Fast Ethernet</b>							
DM-8101	4298020040	1.0 Gbps	2 km	LC Multimode Duplex	191mm	0 to +70 °C	✓
DM-8102	4298020070	1.0 Gbps	55 km	LC Singlemode Duplex	191mm	0 to +70 °C	✓
DM-8104	4298020070	1.0 Gbps	55 km	LC Singlemode Duplex	191mm	0 to +70 °C	✓
<b>10G Ethernet</b>							
<b>Bipolar</b>							
DM-8105	4298020080	10 Gbps	100 m	LC Multimode Duplex	191mm	0 to +70 °C	✓
DM-8106	4298020090	10 Gbps	200 m	LC Singlemode Duplex	191mm	0 to +70 °C	✓
DM-8107	4298020090	10 Gbps	200 m	LC Singlemode Duplex	191mm	0 to +70 °C	✓
DM-8108	4298020090	10 Gbps	200 m	LC Singlemode Duplex	191mm	0 to +70 °C	✓
DM-8109	4298020090	10 Gbps	200 m	LC Singlemode Duplex	191mm	0 to +70 °C	✓
<b>Plastic</b>							
DM-8110	4298020090	10 Gbps	200 m	LC Singlemode Duplex	191mm	0 to +70 °C	✓
DM-8111	4298020090	10 Gbps	200 m	LC Singlemode Duplex	191mm	0 to +70 °C	✓
DM-8112	4298020090	10 Gbps	200 m	LC Singlemode Duplex	191mm	0 to +70 °C	✓
DM-8113	4298020090	10 Gbps	200 m	LC Singlemode Duplex	191mm	0 to +70 °C	✓
DM-8114	4298020090	10 Gbps	200 m	LC Singlemode Duplex	191mm	0 to +70 °C	✓
DM-8115	4298020090	10 Gbps	200 m	LC Singlemode Duplex	191mm	0 to +70 °C	✓
DM-8116	4298020090	10 Gbps	200 m	LC Singlemode Duplex	191mm	0 to +70 °C	✓
DM-8117	4298020090	10 Gbps	200 m	LC Singlemode Duplex	191mm	0 to +70 °C	✓
DM-8118	4298020090	10 Gbps	200 m	LC Singlemode Duplex	191mm	0 to +70 °C	✓
DM-8119	4298020090	10 Gbps	200 m	LC Singlemode Duplex	191mm	0 to +70 °C	✓