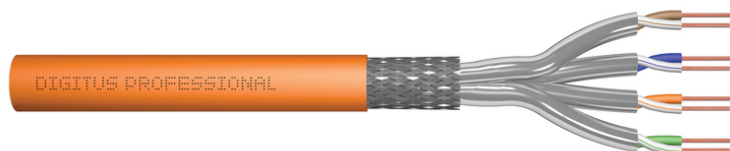


# DIGITUS Cat.7 S/FTP installation cable, 1000 m, simplex, Dca

DK-1743-VH-10  
EAN 4016032300786



### CAT 7 S-FTP installation cable, 1200 MHz Dca (EN 50575), AWG 23/1, 1000 m drum, sx, orange

The Digitus Cat 7 installation cable is designed for use in the structured data center and the building cabling according to ISO/IEC 11801, DIN EN 50288-4-1, DIN EN 50173, IEC 61156-7, EN 50288-9-1. The cable is perfectly suitable for the transmission of both analog and digital data and also supports POE and POE+. The shielding structure is composed of single shielded pairs with a tinned copper braid, which ensures excellent shielding and electrical values.

#### Future-oriented standards and high-end quality for your network.

- Physical properties:
- Conductor: Bare copper wire, AWG 23/1
- System(s) of assessment and verification of constancy of performance: System 3
- Insulation: SFS-PE (foamed polyethylene jacket)
- Total number of insulated conductors: 8, twisted into 4 pairs
- Color code: Blue-white, orange-white, green-white, brown-white
- Shielding of the individual pairs: aluminum-laminated polyester film, covers 100%
- Overall shielding: copper braiding
- Outer sheath: Eca to B2ca in accordance with EN 50575; LSZH
- Outer sheath thickness (nominal): 0.50 mm (Eca); 0.52 mm (Dca); 0.60 mm (Cca); 0.60 (B2ca)
- Color: Orange (RAL 2008)
- Mechanical properties:
- Strain relief: 150N max.
- Dynamic bending radius: 8x AD mm min.
- Static bending radius: 4x AD mm min.
- Transport and storage temperature range: -20 °C to +60 °C

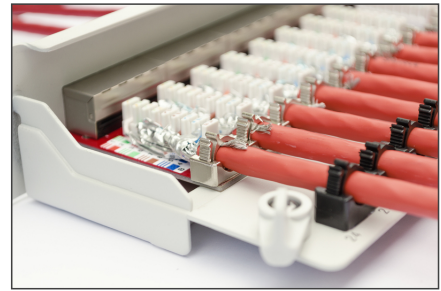
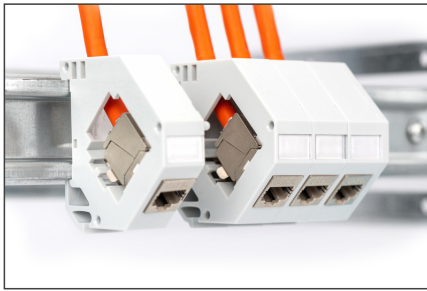
- Operating temperature range: -20 °C to +50 °C
- Installation temperature range: 0 °C to +50 °C
- Outer diameter simplex (nominal): 7.0 mm (Eca); 7.2 mm (Dca); 7.5 mm (Cca); 7.5 mm (B2ca)
- Weight (kg/km): 49.5 kg (Eca); 51 kg (Dca), 53 kg (Cca); 53 kg (B2ca)
- Electrical properties:
- Impedance: 100±15 Ohm @ 4 - 1000 MHz; 100±25 OHM @ 100-600 MHz
- Capacitance: 45 pF/m nominal @ 1 KHz
- Capacitance unbalance (pair-earth): 1.6 pF/m max. @ 1 KHz
- Insulation resistance: 5 GOhm x km min.
- DC resistance: 95 Ohm/km max. (2% max. unbalanced resistance)
- Loop resistance: 190 Ohm/km max. (2% max. unbalanced resistance)
- Operating voltage: 72 Vdc max.
- Outer sheath: Dca-s2 d1 a1 acc. to EN 50575; LSZH
- Coupling attenuation: CA-Type 1b
- Phase delay: 450 nS/100 m max.
- Time delay: 10 nS/100 m max.
- Separation class: "d" according to EN 50174-2
- NVP: 79%

#### Attributes

- Assortment: Twisted Pair Installation Cables
- Category: CAT 7
- Shielding: S-FTP, pairs in metal foil and braid shielding
- CPR: Dca
- Length: 1000 m
- Color: orange
- Jacket: LSOH
- Structure: 4 x 2 AWG 23/1, solid twisted pair

Logistics						
	Number (pcs)	Weight (kg)	Depth (cm)	Width (cm)	Height (cm)	cm <sup>3</sup>
Packaging Unit Carton	8	396.00	55.00	55.00	35.00	105.88
Packaging Unit Inside	1	47.00	55.00	55.00	35.00	105.88
Packaging Unit Single	1	47.00	55.00	55.00	35.00	105.88
Net single without Packaging	0	54.00	55.00	55.00	35.00	105.88

More images:



**CAT 7 S/FTP Installation Cable, 1,000 m, Simplex, D<sub>ca</sub>**

AWG 23/1 | 1200 MHz | 10 Gbit Ethernet | CAT 7 | 1,000 m

20/7+50° | LSZH | D<sub>ca</sub> | CPRI class

DK.1743-VH-10 // CAT 7 S/FTP Installation Cable, 1000m, Simplex, D<sub>ca</sub>

Anwendungsbeispiel  
Example of use

DK.1743-VH-10 // CAT 7 S/FTP Installation Cable, 1000m, Simplex, D<sub>ca</sub>

Kabelquerschnitt  
Cable cross section

**Produktkennlinien Product Information**

Bestandteile	Produkt	Physikalische Spezifikationen Physical Properties
Bestandteile	Produkt	Physikalische Spezifikationen Physical Properties
Bestandteile	Produkt	Physikalische Spezifikationen Physical Properties

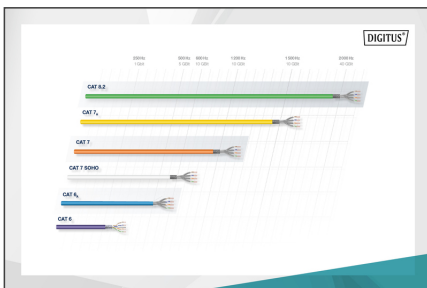
**Leistungseigenschaften Transmission Properties**

MHz	ATT	MLT	PL NEXT	ALF	ACR	PLACK	RL	RETRN	PRETRN
1	2	3	7	7	7	7	26	26	26
10	10	9	7	7	7	7	21	21	21
100	10	9	7	7	7	7	16	16	16
1000	10	9	7	7	7	7	11	11	11
10000	10	9	7	7	7	7	6	6	6
100000	10	9	7	7	7	7	1	1	1

**Certificate** No. 18964-10  
**Zertifikat** No. 18964-10

Class B<sub>1</sub> | Klasse B<sub>1</sub>

2 Connector Permanent Link, Copper, Class B<sub>1</sub>  
GHMT Type Approval



**CEP Bestimmung** | **Druckverhältnisse** | **Leitungsparameter (P/100)** | **Abgleich der verbleibenden Leiter** | **Zusammenfassung**

B2<sub>ca</sub> | C<sub>ca</sub> | D<sub>ca</sub> | E<sub>ca</sub>

1+ | 3

C<sub>ca</sub> | s1a | d1 | a1



Safety notes

- Data cables must not be bent, stretched or twisted excessively. Sharp bends can damage the cable sheath and lead to failures or short circuits.
- Installation only by trained specialists.
- Installation only in dry rooms.
- The data cable must not be in direct contact with other electrical cables or high-voltage sources in order to avoid electromagnetic interference.

EU responsible person

EU based economic operator ensuring the product complies with the required regulations.

ASSMANN Electronic GmbH  
Auf dem Schüffel 3  
Lüdenscheid, Germany  
<https://www.assmann.com>  
[info@assmann.com](mailto:info@assmann.com)