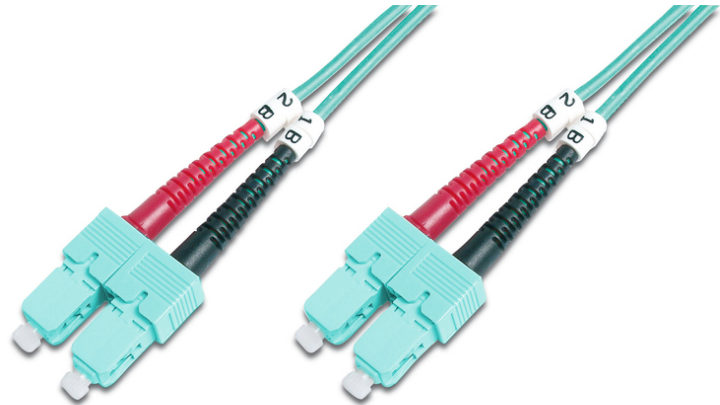


# DIGITUS Fiber Optic Multimode Patch Cord, OM 3, SC / SC

DK-2522-02/3  
EAN 4016032248545



**FO patch cord, duplex, SC to SC MM OM3 50/125 μ, 2 m**

FO patch cord, duplex, SC to SC,MM OM3 50/125 μ, 2 m

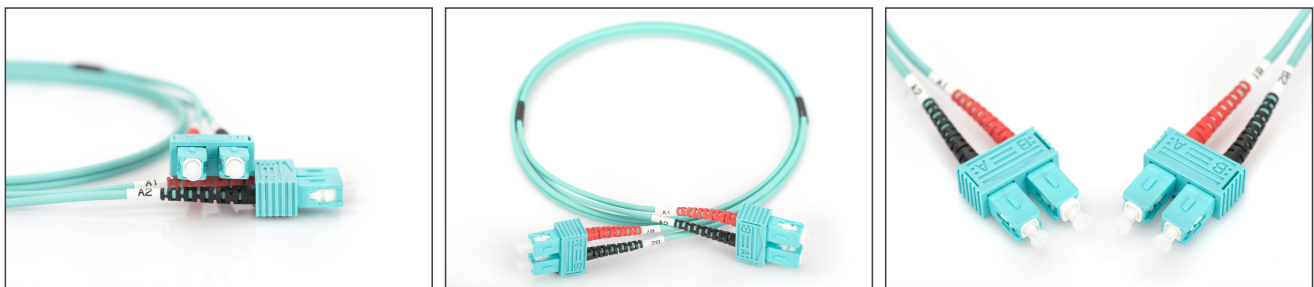
**Future-oriented standards and high-end quality for your network.**

- Duplex cable
- LSOH
- Connector with ceramic ferrule
- Cable diameter 2 mm
- Single packed with test-report
- Assortment: Fiber Optic Patch Cables
- Boot: two-color

- Cable diameter: 2 mm
- Cable type: I-VH 2G50/125μ
- Color cable: aqua
- Connector 1: SC
- Connector 2: SC
- Fiber class: OM3
- Fiber diameter: 50/125μ
- Mode: Multimode
- Packaging: DIGITUS Polybag
- Length: 2 m

| Logistics                    |              |             |            |            |             |                 |
|------------------------------|--------------|-------------|------------|------------|-------------|-----------------|
|                              | Number (pcs) | Weight (kg) | Depth (cm) | Width (cm) | Height (cm) | cm <sup>3</sup> |
| Packaging Unit Carton        | 100          | 10.40       | 60.00      | 38.00      | 32.00       | 73.00           |
| Packaging Unit Inside        | 20           | 1.30        | 18.00      | 19.50      | 14.00       | 4.90            |
| Packaging Unit Single        | 10           | 0.06        | 1.50       | 20.00      | 30.00       | 900.00          |
| Net single without Packaging | 0            | 0.06        | 17.00      | 16.00      | 1.50        | 408.00          |

**More images:**



|                     |                  |      |          |      |
|---------------------|------------------|------|----------|------|
| Part No.            | DK-2522-02/3     |      |          |      |
| Lenght              | 2 m              |      |          |      |
| Cable Type          | Duplex MM 50/125 |      | OM3 LSZH |      |
|                     | END A            |      | END B    |      |
| Connector Type      | SC               |      | SC       |      |
| Insertion Loss (dB) | 0.25             | 0.25 | 0.12     | 0.18 |
| Return Loss (dB)    | 31.5             | 30.2 | 32.7     | 34.7 |
| Q.C.                | PASS             |      |          |      |