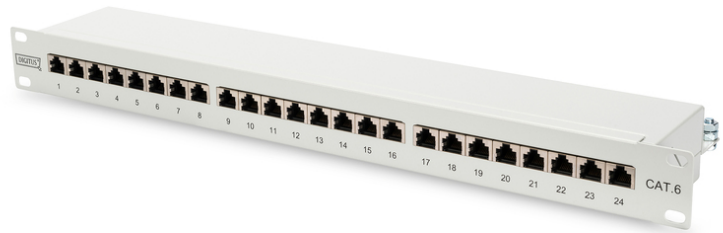


# DIGITUS CAT 6, Class E Patch Panel

**DN-91624S**  
**EAN 4016032241614**



**CAT 6 patch panel, shielded, 24-port RJ45, 8P8C, LSA, 1U, rack mount, grey, 482x44x109 mm**

The shielded CAT 6 Patch Panel from DIGITUS® is available as 16- or 24-port version. It is manufactured acc. to Link Performance Class E, for up to 250 MHz, EN 50173 and ISO/IEC 11801 and complies with the 802.3at PoE+ and the 802.3af PoE standard. The housing is made of 1.5 mm galvanized cold-rolled steel and is therefore perfectly suitable for 19" rack mounting.

**Future-oriented standards and high-end quality for your network.**

- Transmission properties: Category 6
- Area of application: Up to 250 MHz, 1GBase-T
- Norms: ISO/IEC 11801 3rd Ed., EN 50173-1, EIA/TIA 568-C
- General properties:
- Suitable for 483 mm (19") cabinet mounting
- RJ45 female, 8P8C
- Cable installation via LSA strips, color coded according to EIA/TIA 568 A & B
- Cable fixing with smart cable ties
- Central ground connection
- 360° shield coverage
- Mechanical properties:
- Housing material: 1.5 mm galvanic cold rolled steel, acc. to EN1.4301, UNS S30400, AISI 304 and LMSAD110

- RJ45 female material: ABS UL 94V-0
- RJ45 female contact: Tinned phosphor bronze, 0.5 µ gold-plated contact
- RJ45 shielding: Tinned bronze
- LSA termination clamp: Krone LSA+, UL 94V-2, zinc plated phosphor bronze
- Ground wire: Not included
- Conductor plate: FR4, UL 94V-0
- Physical properties:
- Insertion force: 30N max. (IEC 60603-7-5)
- Retention strength: 7.7 kg between jack and plug
- Operation temperature: -20° C to +70 °C (ISO/IEC 11801, EN 50173-1, ANSI/TIA/EIA 568 C)
- Mating cycles female: > 750 acc. to ISO/IEC 11801, IEC 60603-7-5
- Clamp: > 200 acc. to ISO/IEC 11801, IEC 60603-7-5
- IDC wire size: 22 – 26 AWG solid and stranded conductor
- Insulation resistance: > 500 MOhm
- Contact resistance: < 20 MilliOhm
- Dielectric strength: 1000 VDC (Contact/Contact), 1500 VDC (Contact/Ground)
- Colour: Grey RAL7035
- Color: light grey, RAL 7035
- Ports: 24
- Units: 1
- Category: CAT 6

Logistics						
	Number (pcs)	Weight (kg)	Depth (cm)	Width (cm)	Height (cm)	cm³
Packaging Unit Carton	8	12.40	58.00	32.00	34.00	63.10
Packaging Unit Inside	1	1.56	7.50	56.00	15.00	6.30
Packaging Unit Single	1	1.88	51.50	5.50	13.50	3,823.90
Net single without Packaging	0	1.50	11.00	48.30	4.50	2,390.90

More images:

