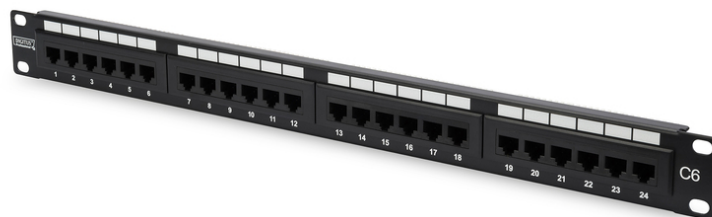


# DIGITUS CAT 6, Class E Patch Panel

**DN-91624U**  
**EAN 4016032241553**



**CAT 6 Patch Panel, unshielded, 24-port RJ45 24-port RJ45, 8P8C, LSA, 1U, bl, 482x44x109 mm, bl**

The unshielded CAT 6 Patch Panel from DIGITUS® is available as 16- or 24-port (1 High unit) or 48-port version (2 High units). It is manufactured acc. to Link Performance Class E, for up to 250 MHz, EN 50173 and ISO/IEC 11801. It is UL certified. The housing is made of 1.5 mm galvanized cold-rolled steel is therefore perfectly suitable for 19" rack mounting.

**Future-oriented standards and high-end quality for your network.**

- Transmission properties: Category 6
- Area of application: Up to 250 MHz, 1GBase-T, PoE
- Norms: ISO/IEC 11801 3rd Ed., EN 50173-1, EIA/TIA 568-C
- General properties:
- Suitable for 483 mm (19") cabinet mounting
- RJ45 female, 8P8C
- Cable installation via LSA strips, color coded according to EIA/TIA 568 A & B
- Cable fixing with smart cable ties
- Mechanical properties:
- Housing material: 1.5 mm galvanic cold rolled steel, acc. to EN1.4301, UNS S30400, AISI 304 and LMSAD110
- RJ45 female material: ABS UL 94V-0
- RJ45 female contact: Tinned phosphor bronze, 0.5 µ gold-plated contact

- RJ45 shielding: Tinned bronze
- LSA termination clamp: Krone LSA+, UL 94V-2, zinc plated phosphor bronze
- Ground wire: Not included
- Conductor plate: FR4, UL 94V-0
- Physical properties:
- Insertion force: 30N max. (IEC 60603-7-5)
- Retention strength: 7.7 kg between jack and plug
- Operation temperature: -20° C to +70 °C (ISO/IEC 11801, EN 50173-1, ANSI/TIA/EIA 568 C)
- Mating cycles female: > 750 acc. to ISO/IEC 11801, IEC 60603-7-5
- Clamp: > 200 acc. to ISO/IEC 11801, IEC 60603-7-5
- IDC wire size: 22 – 26 AWG solid and stranded conductor
- Insulation resistance: > 500 MOhm
- Contact resistance: < 20 MilliOhm
- Dielectric strength: 1000 VDC (Contact/Contact), 1500 VDC (Contact/Ground)
- Contact resistance: < 20 MilliOhm
- Dielectric strength: 1000 VDC (Contact/Contact), 1500 VDC (Contact/Ground)
- Colour: Black RAL9005
- Color: black, RAL 9005
- Ports: 24
- Units: 1
- Category: CAT 6

| Logistics                    |              |             |            |            |             |        |
|------------------------------|--------------|-------------|------------|------------|-------------|--------|
|                              | Number (pcs) | Weight (kg) | Depth (cm) | Width (cm) | Height (cm) | cm³    |
| Packaging Unit Carton        | 10           | 6.50        | 52.00      | 23.50      | 31.00       | 37.90  |
| Packaging Unit Inside        | 1            | 0.65        | 8.00       | 56.00      | 10.00       | 4.50   |
| Packaging Unit Single        | 1            | 0.69        | 8.00       | 56.00      | 10.00       | 4.50   |
| Net single without Packaging | 0            | 0.63        | 3.00       | 48.50      | 4.50        | 654.80 |

**More images:**

