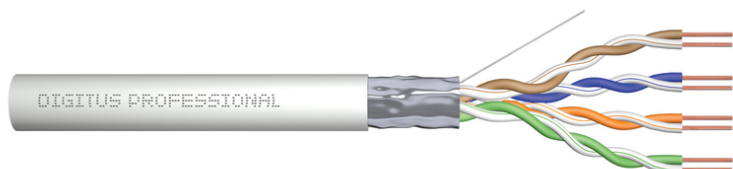


DIGITUS Cat.5e F/UTP installation cable, 305 m, Eca

DK-1521-V-305
EAN 4016032241126



CAT 5e F-UTP installation cable, 100 MHz Eca (PVC), AWG 24/1, 305 m paper box, sx, grey

The Digitus® Cat.5e F/UTP installation cable is characterized by the following cable construction 4x2x AWG23/1 and reaches a transmission frequency up to 100 MHz. The PVC cable jacket is conform to the CPR Euro class Eca. The cable is suitable for building structured cabling in the secondary and tertiary area. Compliant with the following standards ISO/IEC 11801, DIN EN 50173, DIN EN 50288-2-1.

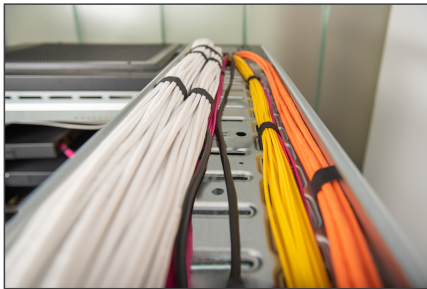
Future-oriented standards and high-end quality for your network.

- Physical properties:
- Conductor: Bare annealed copper, solid AWG 24/1
- System/s of AVCP: AVCP 3
- Insulation: PE (Polyethylene)
- Total number of insulated conductors: 8, twisted in 4 pairs
- Color code: Blue-white, orange-white, green-white, brown-white
- Individual pair shielding: None
- Overall shielding: Foil shielded, drain wire
- Overall sheath: Eca acc. to EN 50575; PVC
- Outer sheath diameter (nominal): 0.55 mm nominal
- Outer sheath color: Grey (RAL 7035)
- Mechanical properties:
- Tensile loading: 150N max.
- Dynamic bending radius: 8x AD mm min.

- Static bending radius: 4x AD mm min.
- Shipping- and storage temperature range: -20 °C up to +75 °C
- Operating temperature range: -20 °C up to +60 °C
- Installation temperature range: 0 °C up to +50 °C
- Overall diameter Simplex (nominal): 6.1 mm nominal
- Electrical properties:
- Impedance: 100±5 Ohm @ 1-100 MHz
- Capacitance: 40 pF/m nominal @ 800 Hz
- Capacitance unbalance (pair-ground): 1.5 pF/m max. @ 1 KHz
- Insulation resistance: 5 GOhm x km min.
- DC loop resistance: 147 Ohm/km max. (2% max. resistance unbalance)
- Voltage resistance: 72 Vdc max.
- Coupling attenuation: CA-Type 3
- Signal propagation delay: 535 nS/100 m max.
- Propagation delay: 20 nS/100 m max.
- Separating class: „b“ acc. to EN 50174-2
- NVP: 69%
- Assortment: Twisted Pair Installation Cables
- Category: CAT 5e
- Shielding: F-UTP, foil shielding
- CPR: Eca
- Length: 305 m
- Color: grey
- Jacket: PVC
- Structure: 4 x 2 AWG 24/1, solid twisted pair

Logistics						
	Number (pcs)	Weight (kg)	Depth (cm)	Width (cm)	Height (cm)	cm³
Packaging Unit Carton	12	27.00	43.00	43.00	25.00	46.20
Packaging Unit Inside	1	13.50	21.00	40.00	42.00	35.30
Packaging Unit Single	1	13.30	21.00	40.00	42.00	35.30
Net single without Packaging	0	10.52	41.00	40.00	18.00	29.50

More images:



CAT 5e F/UTP
Installation Cable, 305 m,
Simplex, E_{ca}

DIGITUS

100 MHz

1 Cat Ethernet

AWG 24/1

CAT 5e

20°/140°

E_{ca} CFR class

DK-1521-V-305 // CAT 5e F/UTP Installation Cable, 305 m, Simplex, E_{ca}

Anwendungsbeispiel
Example of use

DIGITUS

DK-1521-V-305 // CAT 5e F/UTP Installation Cable, 305 m, Simplex, E_{ca}

Kabelquerschnitt
Cable cross section

DIGITUS

Produktinformation Product Information

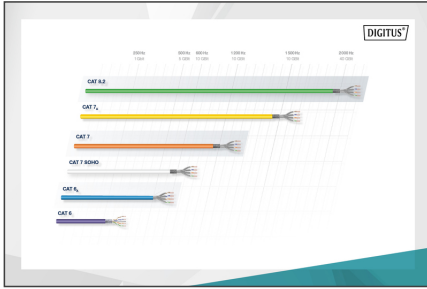
Elektrische Eigenschaften Electrical Properties

Physische Spezifikationen Physical Properties

Parameter	Value	Parameter	Value
Hersteller	Digitus (China)	Hersteller	Digitus (China)
Part Number	DK-1521-V-305	Part Number	DK-1521-V-305
Part Name	CAT 5e F/UTP Installation Cable, 305 m, Simplex, E _{ca}	Part Name	CAT 5e F/UTP Installation Cable, 305 m, Simplex, E _{ca}

Leistungseigenschaften Transmission Properties

Frequency	Att	Att	Att	Att	Att	Att	Att	Att
100	1.0	1.0	1.0	1.0	1.0	1.0	1.0	1.0
200	1.5	1.5	1.5	1.5	1.5	1.5	1.5	1.5
300	2.0	2.0	2.0	2.0	2.0	2.0	2.0	2.0
400	2.5	2.5	2.5	2.5	2.5	2.5	2.5	2.5
500	3.0	3.0	3.0	3.0	3.0	3.0	3.0	3.0
600	3.5	3.5	3.5	3.5	3.5	3.5	3.5	3.5
800	4.5	4.5	4.5	4.5	4.5	4.5	4.5	4.5
1000	5.5	5.5	5.5	5.5	5.5	5.5	5.5	5.5
1200	6.5	6.5	6.5	6.5	6.5	6.5	6.5	6.5
1500	8.0	8.0	8.0	8.0	8.0	8.0	8.0	8.0
2000	11.0	11.0	11.0	11.0	11.0	11.0	11.0	11.0
2500	14.0	14.0	14.0	14.0	14.0	14.0	14.0	14.0
3000	17.0	17.0	17.0	17.0	17.0	17.0	17.0	17.0
3500	20.0	20.0	20.0	20.0	20.0	20.0	20.0	20.0
4000	23.0	23.0	23.0	23.0	23.0	23.0	23.0	23.0
4500	26.0	26.0	26.0	26.0	26.0	26.0	26.0	26.0
5000	29.0	29.0	29.0	29.0	29.0	29.0	29.0	29.0



CPR Evaluation

B2ca

C_{ca}

D_{ca}

E_{ca}

Brand name

Leistungseigenschaften (EN50384)

Adaptation to conditions (EN50384)

Brand name

Brand name

Brand name

Brand name

Brand name

