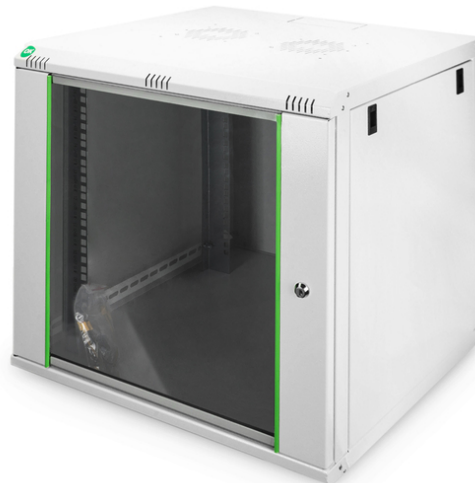


DIGITUS Wall Mounting Cabinets Dynamic Basic Series - 600x600 mm (WxD)

DN-19-12U-6/6-EC
 EAN 4016032221753



12U wall mounting cabinet, Dynamic Basic 611x600x600 mm, color grey (RAL 7035)

The network cabinets for wall installation from the Dynamic series were developed for easy and especially cost-optimized network expansion. The roof, floor and back wall of each cabinet are equipped with a pre-cut cable inlet. To accommodate a fan module, the roof structure is also equipped with a pre-cut area. Two pairs of galvanized 483 mm (19") profile rails labeled with rack units readable in both directions are installed on the inside. Their depth can be adjusted. Each cabinet is made of up to 1.5 mm thick sheet steel. Coloring is done with electrostatic powder coating in the standard colors gray (RAL 7035) or jet black (RAL 9005). Removable side walls as well as lockable and removable front door improve accessibility. The door hinges can be switched. Wall installation is accomplished in two easy work steps: The mounting plate provided is bolted on the wall and then connected with the housing.

483 mm (19") profile rails mounted on the front- and rear side inside of the rack, galvanized

- Safety class rating IP20
- Lockable safety-glass door with steel frame
- 235° door opening angle
- 1-point-locking-mechanism on the front door
- 483 mm (19") profile rails mounted on the front- and rear side inside of the rack, galvanized

- 483 mm (19") profile rails are adjustable in depth and with height unit marking
- 0.8 - 1.2 mm strong sheet steel with high load capacity, powder coated
- Cable entry on the rear side, roof and base (pre-punched break-outs)
- Roof is prepared for fan units (punched out entries)
- Ventilation slots for active and passive ventilation and exhausting
- 4 earthing points (base, side panel and front door) with protection cap
- Equipment mounting depth min.-max.: 320 - 450 mm
- Cabinet type: Wall mounting cabinet
- Color: light grey, RAL 7035
- Depth: 600 mm
- Front door: Glass door, single opening
- Load capacity: 60 kg
- Side panels: Both sides
- Units: 12
- Width: 600 mm
- IP protection class: IP20
- Mounted: yes

Package contents

- Installation set (screws, cage nuts, washers)
- Earthing wire set
- 2 x Keys

Logistics						
	Number (pcs)	Weight (kg)	Depth (cm)	Width (cm)	Height (cm)	cm ³
Packaging Unit Carton	1	30.50	63.00	63.00	66.00	262.00
Packaging Unit Inside	1	30.50	63.00	63.00	66.00	262.00
Packaging Unit Single	1	24.50	63.00	63.00	66.00	262.00
Net single without Packaging	0	23.50	60.00	60.00	63.80	229.80

More images:

