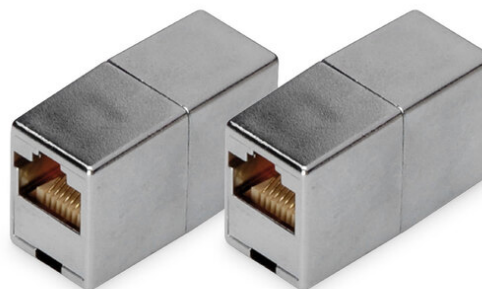


DIGITUS Acoplador modular RJ45, Classe D DIGITUS CAT 5e - 2 unidades

DN-93901-2
EAN 4016032495031



CAT 5e Modular Coupler, shielded RJ45 to RJ45, 2 pcs.

The modular CAT5e Class D coupler from DIGITUS® consists of two shielded RJ45 female ports. The assignment is "1:1".

- Revestimento dos contactos: Níquel, dourado 0,5µ

- PCB:FR4, UL 94V-0
- Material dos contactos: Bronze fósforo
- Ciclos de emparelhamento: ≥ 750 (ISO/IEC 11801, IEC 60603-7-5)
- 2 unidades

Logistics						
	Number (pcs)	Weight (kg)	Depth (cm)	Width (cm)	Height (cm)	cm³
Packaging Unit Carton	2000	18.00	51.00	27.00	25.00	34,425.00
Packaging Unit Inside	100	0.90	17.00	8.00	17.00	2,312.00
Packaging Unit Single	1	0.01	2.40	12.00	18.00	518.40
Net single without Packaging	1	0.02	7.40	2.20	4.40	0.00

Safety notes

- Protect product from moisture
- Avoid antistatic charging when installing the product
- Observe the specifications of the raw cable manufacturer during installation

EU responsible person

EU based economic operator ensuring the product complies with the required regulations.

ASSMANN Electronic GmbH
Auf dem Schüffel 3
Lüdenscheid, Germany
<https://www.assmann.com>
info@assmann.com