

# DIGITUS SOHO PRO wall-mounted enclosure - 254 mm (10") - 315x300 mm (WxD)

DN-49100  
EAN 4016032493624



**10" 6U wall mounting cabinet, SOHO PRO 325 x 315 x 300 mm, grey**

Whether in the home, office or in sub-distribution boards with limited space: With the compact 254 mm (10") solutions from the SOHO PRO series, you can install your network wherever you want. Available in three height units (6U, 9U, 12U), the wall-mounted enclosures are equipped with a full glass door and a cable entry in the roof and base. A pair of galvanized 254 mm (10") profile rails labelled with legible height units are installed inside. These can be adjusted in depth. Each cabinet is a robust steel construction made of up to 1.5 mm thick sheet steel. The coloring takes the form of electrostatic powder coating in the standard colors grey (RAL 7035) and black (RAL 9005). The door hinges can be changed. The network enclosures are supplied unassembled in an optimized flat pack. Assembly takes place in just a few steps and is child's play thanks to the enclosed step-by-step instructions.

**The DIGITUS® wall-mounted enclosure SOHO PRO series is characterized by its efficient delivery in an optimized flat pack and particularly user-friendly installation.**

- Protection class IP20
- Lockable safety glass door
- 200° door opening angle
- 1-point locking on the front door

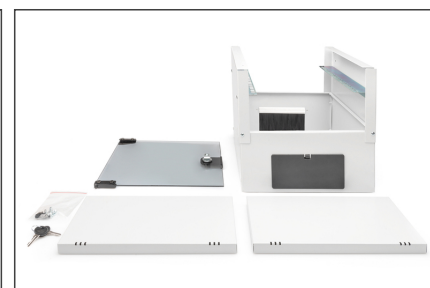
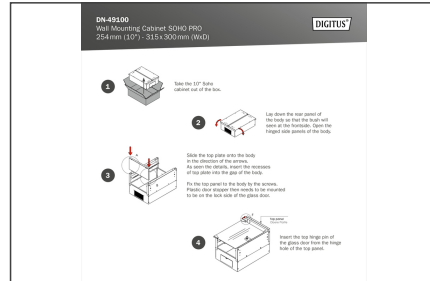
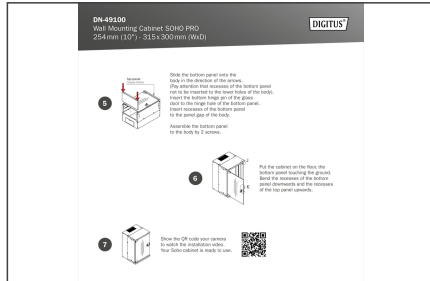
- 254 mm (10") profile rails mounted at the front inside the enclosure, galvanized
- 254 mm (10") profile rails are adjustable in depth
- 1.1 - 1.5 mm thick sheet steel with a high load-bearing capacity, powder-coated
- Cable entry with brush strip in the roof and with plastic cover in the floor
- Ventilation slots for active and passive ventilation
- Installation depth for components max.: 254 mm
- Product dimensions (H x W x D): 325 x 315 x 300 mm
- Packaging dimensions (H x W x D): 175 x 340 x 360 mm
- Weight (net / gross): 5.01 / 5.25 kg
- Cabinet type: Wall mounting cabinet
- Color: light grey, RAL 7035
- Front door: Glass door, single opening
- Load capacity: 30 kg
- Side panels: Both sides
- Units: 6
- Width: 316 mm
- IP protection class: IP20
- Mounted: no

**Package contents**

- 2x key
- 1x QIG

Logistics						
	Number (pcs)	Weight (kg)	Depth (cm)	Width (cm)	Height (cm)	cm³
Packaging Unit Carton	1	5.25	34.00	36.00	17.50	21,420.00
Packaging Unit Inside	1	5.25	34.00	36.00	17.50	21,420.00
Packaging Unit Single	1	5.25	34.00	36.00	17.50	21,420.00
Net single without Packaging	1	5.01	30.00	31.50	32.50	0.00

More images:



**Safety notes**

- Ensure adequate ventilation to prevent the installed devices from overheating.
- Network cabinets should not be overfilled and the ventilation openings must not be blocked.
- Cables should be neatly routed and organized in cable ducts or trays.
- Use surge protection devices to protect sensitive devices from power surges or lightning strikes.
- Avoid moisture or wetness while observing the respective IP protection class.
- Ensure that the cabinet and the devices used are properly earthed.
- In regions with frequent thunderstorm activity, professional lightning protection should be integrated into the power supply.
- To avoid uneven loading, always mount the heaviest units at the bottom of the cabinet.
- Disconnect the installed devices from the power supply during maintenance or installation work.

**EU responsible person**

EU based economic operator ensuring the product complies with the required regulations.

ASSMANN Electronic GmbH  
Auf dem Schüffel 3  
Lüdenscheid, Germany  
<https://www.assmann.com>  
[info@assmann.com](mailto:info@assmann.com)