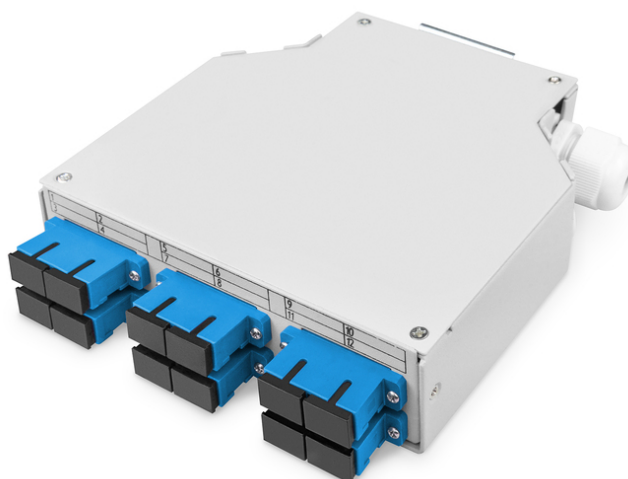


# DIGITUS Fiber optic DIN rail box, OS2, equipped, with SC adapter and pigtail

DN-963890

EAN 4016032493112



## Fiber DIN Rail Box, Preassembled, SM, 6 SC DX with Pigtails and Couplers

The fiber optic DIN rail box is a special, compact housing for the efficient management, distribution and protection of fiber optic cables in industrial and telecommunications environments. It is designed for mounting on a DIN rail and is therefore ideal for installation in switch cabinets, control panels and distribution boxes. The box comes pre-configured with key fiber optic components, including adapters, pigtails and splice trays, providing a ready-to-use solution that enables quick installation and ensures reliable connectivity. The space-saving design ensures that it can be neatly mounted alongside other equipment without cluttering the installation space. The cable management features help maintain the integrity of fiber optic connections and prevent signal degradation.

**The pre-assembled fiber optic DIN rail box with its pre-installed adapters and pigtail is quickly ready for use and ensures minimal set-up time. It provides reliable protection for fiber optic connections under various application scenarios.**

- Number of connections : 6

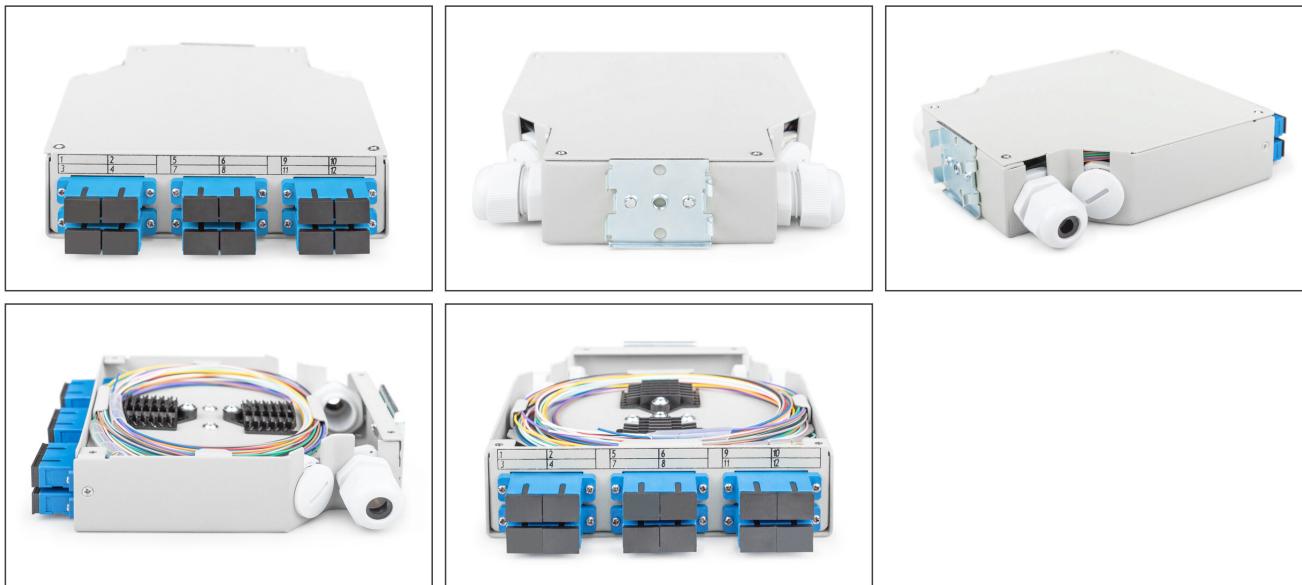
- Suitable for splicing installation cables
- Capacity: up to 12 fibers
- Fiber type : Singlemode
- Fiber class: OS2
- Fiber structure : 9/125  $\mu$ m
- Equipped with SC-Dx adapter and SC pigtail
- Adapter : SC Duplex with ceramic sleeves
- Length of the fiber pigtail : 2 m
- Diameter of the fiber pigtail: 0.9 mm
- Housing : Steel
- Color : Grey (RAL 7035)
- Cable entry : Two cable entry openings and one M20 cable gland
- Strain relief : through cable gland
- Temperature - Operation °C -20 °C - 60 °C
- Temperature - Storage °C -20 °C - 60 °C
- Dimensions : 135 x 38 x 141 mm

## Package contents

- 1 x fiber optic top-hat rail box, OS2, equipped, with SC adapter and pigtail

Logistics						
	Number (pcs)	Weight (kg)	Depth (cm)	Width (cm)	Height (cm)	cm <sup>3</sup>
Packaging Unit Carton	1	0.94	17.50	15.00	4.00	1,050.00
Packaging Unit Inside	1	0.94	17.50	15.00	4.00	1,050.00
Packaging Unit Single	1	0.94	17.50	15.00	4.00	1,050.00
Net single without Packaging	1	0.90	13.00	12.50	3.50	0.00

**More images:**



**Safety notes**

- Avoid direct contact with light sources: Fiber optic cables, especially those with active light sources such as lasers (e.g. in optical communication systems), can emit dangerous radiation that can damage eyes. Take care never to look directly into the light of an optical fiber, even if the light source is invisible to the naked eye.
- When working with fiber optic cables, especially during tests or when working with lasers, protective goggles should always be worn to protect against harmful radiation.
- When plugging and unplugging the cable, only grasp the plug and do not pull directly on the cable.
- Do not kink or crush: Fiber optic cables are sensitive to mechanical stress.
- To protect cables from physical damage, they should be laid in special ducts or with protective materials
- Keep cable connectors clean: Fiber optic cables are sensitive to dust and dirt. Even small particles on the connectors can severely impair the signal quality.
- Cables should not be used in environments with extremely high or very low temperatures. Observe the product information on the maximum operating temperature of the cable
- Check cables regularly for visible damage such as cracks, kinks or signs of wear. Defective cables should be replaced immediately.

**EU responsible person**

EU based economic operator ensuring the product complies with the required regulations.

ASSMANN Electronic GmbH  
Auf dem Schüffel 3  
Lüdenscheid, Germany  
<https://www.assmann.com>  
[info@assmann.com](mailto:info@assmann.com)