

# DIGITUS UPS mounting kit for 19" network/ server cabinets (profile rail)

DN-170109  
EAN 4016032473619



### Rail kit for 1K~10K UPS (2U or 3U) with package

With this mounting kit, UPS systems can be installed in DIGITUS® 483 mm (19") network or server cabinets. Emergency power supplies with 2 or 3 U height can be installed, compatible with the DIGITUS® OnLine UPS systems (1K-10K). Installation is carried out on 4 profile rails of the 19" rack.

### The mounting kit enables easy installation of OnLine UPS systems in 19" network / server cabinets

- For fixed installation on the four 483 mm (19") profile rails
- 1 piece consists of two parts (internal and external profile system)

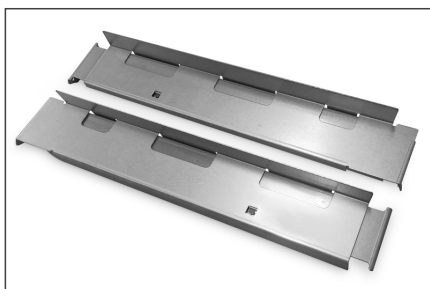
- Variable for the following depths: 468.5 mm to 1000 mm
- Incl. mounting material
- Dimensions (LxWxD): 85 x 65 mm x 496.5 mm
- Net weight : 2,77 kg
- Gross weight : 3,37 kg
- Color: Silver

### Package contents

- 1 x UPS mounting kit for 19" network/ server cabinets
- 1 x installation guide

Logistics						
	Number (pcs)	Weight (kg)	Depth (cm)	Width (cm)	Height (cm)	cm³
Packaging Unit Carton	8	27.50	59.50	21.70	21.00	27,114.20
Packaging Unit Inside	1	3.44	48.80	9.50	4.70	2,178.92
Packaging Unit Single	1	3.44	48.80	9.50	4.70	2,178.92
Net single without Packaging	1	2.78	47.50	8.50	4.00	0.00

### More images:



### Safety notes

- The UPS system must be absolutely dry before it is installed. Please allow the UPS system to acclimatize for at least two hours to adapt to the environment.

- Protect the UPS system from water or moisture.
- Avoid direct sunlight or installation near heat sources.
- Do not block any ventilation openings in the housing.
- Do not connect any devices or appliances that would overload the system.
- Lay cables so that nobody can step on them or trip over them.
- Do not connect any household appliances to the output sockets of the UPS system.
- Only connect the UPS system to an earthed and easily accessible socket.
- Only use VDE-tested, CE-marked mains connection cables at the input and outputs.
- Never disconnect the mains connection cable during operation as this would cancel the protective earthing of the UPS system and all connected loads.
- The UPS system has its own internal power source. The output sockets or output terminals of the UPS system can be energized even if the UPS system is not connected to the building cabling.
- To switch off the UPS system completely, first press the OFF/Enter button to disconnect the mains.
- Caution - Risk of electric shock. Even after disconnecting the device from the mains, the components inside the UPS system are still connected to the battery. There is a risk of electric shock.
- Only persons who are sufficiently familiar with batteries and the necessary safety precautions may replace batteries and monitor operation.
- Caution - Risk of electric shock. The battery circuit is not isolated from the input voltage. Dangerous voltages can occur between the battery terminals and the ground. Ensure that no voltage is present before touching!
- When replacing the batteries, install the same number and type of batteries.
- Do not open or destroy batteries. Leaking electrolyte can injure the skin and eyes and may be toxic.
- The appliance may only be opened and repaired by a trained specialist.

**EU responsible person**

EU based economic operator ensuring the product complies with the required regulations.

ASSMANN Electronic GmbH  
Auf dem Schüffel 3  
Lüdenscheid, Germany  
<https://www.assmann.com>  
[info@assmann.com](mailto:info@assmann.com)