

# DIGITUS CAT 6 U/UTP slim patch cord

**DK-1617-015S**  
**EAN 4016032467939**



**CAT 6 U-UTP slim patch cord, Cu, LSZH AWG 28/7, length 1.5 m, color grey**

DIGITUS® slim patch cords are characterised by their small outer diameter and flexible sheath. Slim design enables versatile use in your network. Moreover, DIGITUS® slim patch cords are manufactured according to ISO/IEC 11801 and DIN EN 50173 CAT 6 standards. They guarantee that the cable installation complies with the ISO & EN channel specification and provide excellent performance in DIGITUS® CAT 6 cabling. Performance was tested up to 250 MHz, including performance characteristics such as near-end crosstalk ("NEXT"). DIGITUS® patch cords were specifically designed to fully meet all requirements in various application areas. Each cable is equipped with a moulded anti-kink sleeve with strain relief. In addition, the sleeve has a locking lever protection, which prevents kinking of the cables and breaking-off of the locking lever from the connector. Category 6 is simply identified by the red coloured connectors.

**Enables flexible and space-saving cabling in your network.**

- 2x RJ45 connectors (8P8C)
- Covers with kink protection, strain relief and locking lever protection
- Length indication on hoods
- Inner conductors: Copper (Cu)
- Halogen free: yes
- Pin Assignment: 1:1

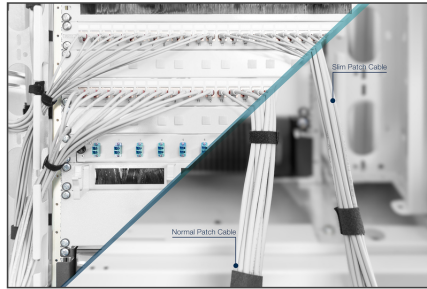
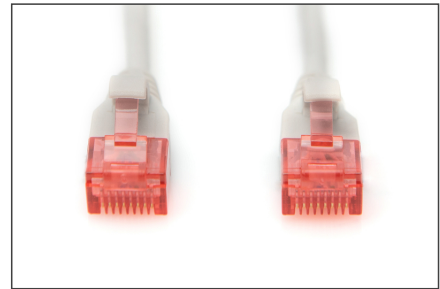
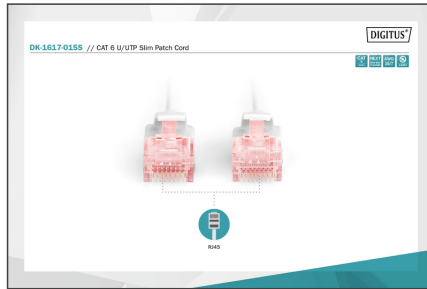
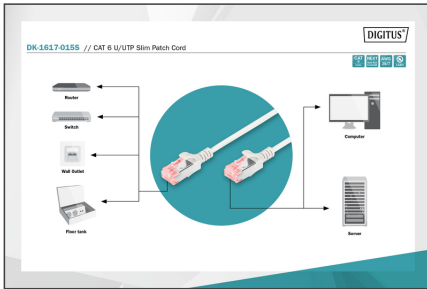
- Category: 6
- AWG cross-section: 28
- Anti-kink sleeve: moulded
- Connector 1 type: RJ45 8(8)
- Connector 2 type: RJ45 8(8)
- Cable design: 4x2
- Flame retardant version: yes
- Anti-kink sleeve colour: Grey
- Locking lever protection: yes
- NVP value: 69
- Oil resistant to EN 60811-404: no
- Bending radius: 4D (outer diameter x 4)
- Sheath colour: Grey
- Length: 1.5 m
- Configuration: 1:1
- Category: CAT 6
- Shielding: U-UTP, unshielded
- Color: grey
- Jacket: LSOH
- Slim Version: yes
- Structure: 4 x 2 AWG 28/7, twisted pair
- Flat Version: no

**Package contents**

- Slim CAT 6 U/UTP patch cord, LSZH

Logistics						
	Number (pcs)	Weight (kg)	Depth (cm)	Width (cm)	Height (cm)	cm <sup>3</sup>
Packaging Unit Carton	150	9.40	46.00	33.00	28.00	42,504.00
Packaging Unit Inside	10	0.63	10.30	25.00	30.00	7,725.00
Packaging Unit Single	1	0.06	1.60	14.00	25.00	560.00
Net single without Packaging	1	0.05	150.00	1.20	1.30	0.00

**More images:**



**Safety notes**

- When plugging and unplugging the cable, only grasp the plug and do not pull directly on the cable.
- Cables must not be kinked sharply or bent at tight angles, as this can damage the inner wires and lead to failures.
- Ensure that the cables are not under tensile load, as this can damage the insulation and the wires inside the cable.
- Ensure that cables are not laid in areas where they can be easily damaged mechanically.
- Cables should not be used in environments with extremely high or very low temperatures. Observe the product information on the maximum operating temperature of the cable
- Check cables regularly for visible damage such as cracks, kinks or signs of wear. Defective cables should be replaced immediately to avoid failures, short circuits or even electric shocks.

**EU responsible person**

EU based economic operator ensuring the product complies with the required regulations.

ASSMANN Electronic GmbH  
 Auf dem Schüffel 3  
 Lüdenscheid, Germany  
<https://www.assmann.com>  
[info@assmann.com](mailto:info@assmann.com)