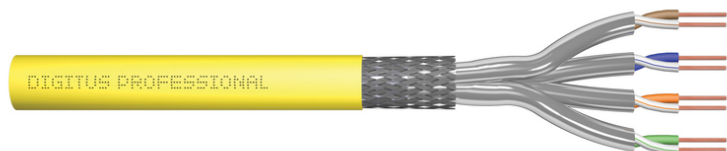


DIGITUS Cat. 7A S/FTP installation cable, 100 m, simplex, Dca-s1a d1 a1

DK-1743-A-VH-1
EAN 4016032462828



CAT 7A S-FTP installation cable, 1500 MHz Dca, AWG 22/1, 100 m ring, SX, yellow

The Digitus Cat 7 installation cable is designed for use in the structured data center and the building cabling according to ISO/IEC 11801, DIN EN 50288-4-1, DIN EN 50173, IEC 61156-7, EN 50288-9-1. The cable is perfectly suitable for the transmission of both analog and digital data and also supports POE and POE+. The shielding structure is composed of single shielded pairs with a tinned copper braid, which ensures excellent shielding and electrical values.

Future-oriented standards and high-end quality for your network.

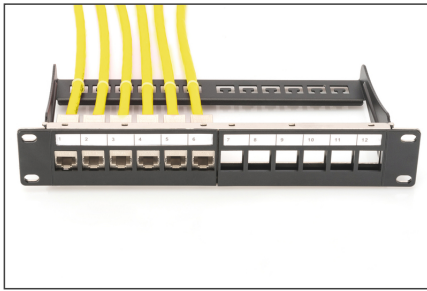
- Physical properties:
- Conductor: Bare copper wire, AWG 22/1
- System(s) of assessment and verification of constancy of performance: System 3
- Insulation: SFS-PE (foamed polyethylene jacket)
- Total number of insulated conductors: 8, twisted into 4 pairs
- Color code: Blue-white, orange-white, green-white, brown-white
- Shielding of the individual pairs: Aluminum-laminated polyester film, covers 100%
- Overall shielding: tinned copper braiding
- Outer sheath: Dca-s1a d1 a1 acc. to EN 50575; LSZH
- Outer sheath thickness (nominal): 0.60 mm (Dca); 0.60 mm (Cca)
- Outer sheath color: Yellow (RAL 1028)
- Mechanical properties:
- Strain relief: 150N max.
- Dynamic bending radius: 8x AD mm min.
- Static bending radius: 4x AD mm min.

- Transport and storage temperature range: -20 °C to +60 °C
- Operating temperature range: -20 °C to +60 °C
- Installation temperature range: 0 to +50C
- Outer diameter (nominal): 7.8 mm (Dca); 7.8 mm (Cca)
- Weight (kg/km): 65 kg (Dca); 65 kg (Cca)
- Electrical properties:
- Impedance: 100±5 Ohm @ 1-1000 MHz
- Capacitance: 40 pF/m nominal @ 1 KHz
- Capacitance unbalance (pair-earth): 1.6 pF/m max. @ 1 KHz
- Insulation resistance: 5 GOhm x km min.
- Loop resistance: 147 Ohm/Km max. (2% max. unbalanced resistance)
- Operating voltage: 72 Vdc max.
- Coupling attenuation: CA-Type 1b
- Phase delay: 450 nS/100 m max.
- Time delay: 10 nS/100 m max.
- Separation class: "d" according to EN 50174-2
- NVP: 79%
- Flame spread: EN 60332-1-2 (LSOH-PVC)
- Halogen-free, corrosiveness: EN 60754-1/2 (LSOH)
- Smoke density: EN 61034-2
- Assortment: Twisted Pair Installation Cables
- Category: CAT 7A
- Shielding: S-FTP, pairs in metal foil and braid shielding
- CPR: Dca
- Length: 100 m
- Color: yellow
- Jacket: LSOH
- Structure: 4 x 2 AWG 22/1, solid twisted pair

Logistics

	Number (pcs)	Weight (kg)	Depth (cm)	Width (cm)	Height (cm)	cm³
Packaging Unit Carton	1	5.68	28.00	28.00	16.00	12,544.00
Packaging Unit Inside	1	5.68	28.00	28.00	16.00	12,544.00
Packaging Unit Single	1	5.68	28.00	28.00	16.00	12,544.00
Net single without Packaging	1	0.00	0.00	0.00	0.00	0.00

More images:



CAT 7e S/FTP Installation Cable, 100 m, Simplex, D_{Ca}

DK.1743-A-VH-1 // CAT 7e S/FTP Installation Cable, 100m, Simplex, D_{Ca}

Anwendungsbeispiel
Example of use

DK.1743-A-VH-1 // CAT 7e S/FTP Installation Cable, 100m, Simplex, D_{Ca}

Kabelquerschnitt
Cable cross section

Technische Spezifikationen / Technical Specifications

Produktinformationen / Product Information	Physikalische Spezifikationen / Physical Properties
Bestandteile / Components: 100m CAT 7e S/FTP Installation Cable, 100m CAT 7e S/FTP Installation Cable, 100m CAT 7e S/FTP Installation Cable	Material: Polyethylene (PE) jacket, Polyethylene (PE) insulation, Polyethylene (PE) braid, Polyethylene (PE) shield, Polyethylene (PE) jacket
Technische Spezifikationen / Technical Specifications: 1500 MHz, 10 Gbit Ethernet, CAT 7e, AWG 22/1, LSZH, D Ca, CP/E class	Dimensions: Outer diameter: 10.5 mm, Inner diameter: 8.5 mm, Jacket thickness: 0.2 mm, Insulation thickness: 0.1 mm, Braid thickness: 0.1 mm, Shield thickness: 0.1 mm, Jacket thickness: 0.2 mm

Leistungswerte / Power Values

Frequency (MHz)	Att. (dB)	Att. (dB)	Att. (dB)	Att. (dB)	Att. (dB)	Att. (dB)	Att. (dB)	Att. (dB)
1	1.5	1.5	1.5	1.5	1.5	1.5	1.5	1.5
10	4.2	4.2	4.2	4.2	4.2	4.2	4.2	4.2
100	18.4	18.4	18.4	18.4	18.4	18.4	18.4	18.4
1000	34.5	34.5	34.5	34.5	34.5	34.5	34.5	34.5
1500	38.0	38.0	38.0	38.0	38.0	38.0	38.0	38.0

Certificate No. 19184-10-1

Zertifikat No. 19184-10-1

Category 7

Category 7

Certificate No. 19184-11

Zertifikat No. 19184-11

Class E

Class E

Leistungswerte / Power Values

Leistungswerte / Power Values

Category	Shielding	Att. (dB)	Att. (dB)
B2 _{Ca}	High	1+	1+
C _{Ca}	High	1+	1+
D _{Ca}	Medium	3	3
E _{Ca}	Low	3	3



Safety notes

- Data cables must not be bent, stretched or twisted excessively. Sharp bends can damage the cable sheath and lead to failures or short circuits.
- Installation only by trained specialists.
- Installation only in dry rooms.
- The data cable must not be in direct contact with other electrical cables or high-voltage sources in order to avoid electromagnetic interference.

EU responsible person

EU based economic operator ensuring the product complies with the required regulations.

ASSMANN Electronic GmbH
Auf dem Schüffel 3
Lüdenscheid, Germany
<https://www.assmann.com>
info@assmann.com