

DIGITUS Fiber Optic Splice Box, extendible, quick lock

DN-96200-BL-QL
EAN 4016032458227



FO splice box, 1U, quick lock, empty without front panel, incl. M20/M25 screws, black

The robust empty housing is the base for the assembly if your individual splice box. Next to the already existing splice boxes from DIGITUS® you have the possibility to choose and assemble the necessary components by yourself. For this we offer an extensive assortment of front panels, couplers and pigtails. Our products have a continuous quality control and are according to the valued international standards and norms in the fiber optic cabling. With it we guarantee the best performance and quality for your network.

Future-oriented standards and high-end quality for your network.

- Inner dimension approx (H x W x D): 44 x 428 x 240 mm
- Color: Black

Attributes

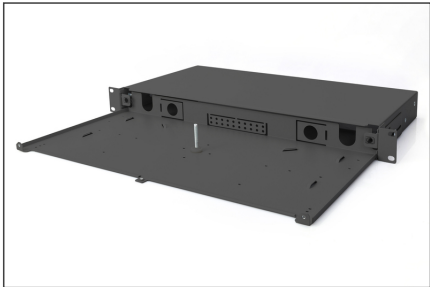
- Assembly: Empty housing
- Color: black, RAL 9005
- Type: sliding

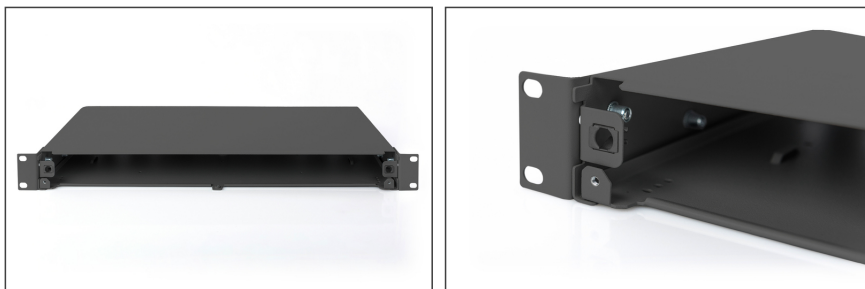
Package contents

- 1x Splice box
- 1x bag with M20/M25 cable entries, cable ties, cable clips, locking clips, screws

| Logistics | | | | | | |
|------------------------------|--------------|-------------|------------|------------|-------------|-----------|
| | Number (pcs) | Weight (kg) | Depth (cm) | Width (cm) | Height (cm) | cm³ |
| Packaging Unit Carton | 5 | 18.00 | 54.00 | 33.00 | 29.00 | 51,678.00 |
| Packaging Unit Inside | 1 | 3.60 | 28.00 | 52.00 | 5.00 | 7,280.00 |
| Packaging Unit Single | 1 | 3.60 | 28.00 | 52.00 | 5.00 | 7,280.00 |
| Net single without Packaging | 1 | 0.00 | 0.00 | 0.00 | 0.00 | 0.00 |

More images:



**Safety notes**

- Avoid direct contact with light sources: Fiber optic cables, especially those with active light sources such as lasers (e.g. in optical communication systems), can emit dangerous radiation that can damage
- eyes. Take care never to look directly into the light of an optical fiber, even if the light source is invisible to the naked eye.
- When working with fiber optic cables, especially during tests or when working with lasers, protective goggles should always be worn to protect against harmful radiation.
- When plugging and unplugging the cable, only grasp the plug and do not pull directly on the cable.
- Do not kink or crush: Fiber optic cables are sensitive to mechanical stress.
- To protect cables from physical damage, they should be laid in special ducts or with protective materials
- Keep cable connectors clean: Fiber optic cables are sensitive to dust and dirt. Even small particles on the connectors can severely impair the signal quality.
- Cables should not be used in environments with extremely high or very low temperatures. Observe the product information on the maximum operating temperature of the cable
- Check cables regularly for visible damage such as cracks, kinks or signs of wear. Defective cables should be replaced immediately.

EU responsible person

EU based economic operator ensuring the product complies with the required regulations.

ASSMANN Electronic GmbH
Auf dem Schöffel 3
Lüdenscheid, Germany
<https://www.assmann.com>
info@assmann.com