

# DIGITUS Panel de conexión modular, 8 puertos

DN-91419  
EAN 4016032455561



**Modular Patch Panel, shielded, 12-port Blank, 1U, 254mm (10") Rack Mount, grey RAL 7035**

Panel de interconexión modular, apantallado, 12 puertos, en blanco, 1U, montaje en bastidor de 254 mm (10"), gris RAL 7035

**Adecuado para acopladores y módulos Keystone Digitus® sin apantallar**

- Panel de conexión para módulos Keystone
- Blindado
- Adecuado para montaje en armario de 254 mm (10")

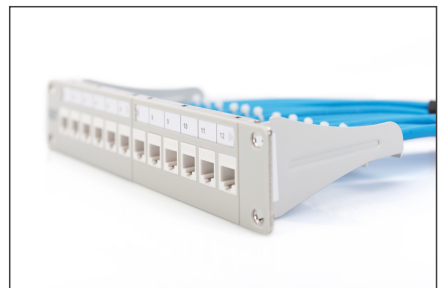
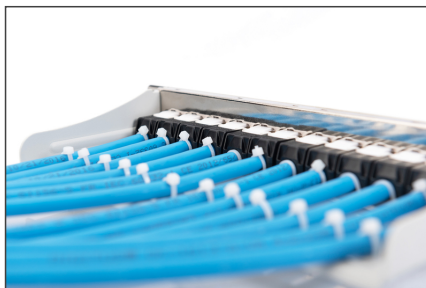
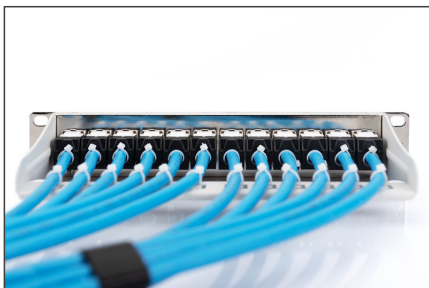
- 1 U
- Color gris (RAL 7035)
- Ventana con etiqueta

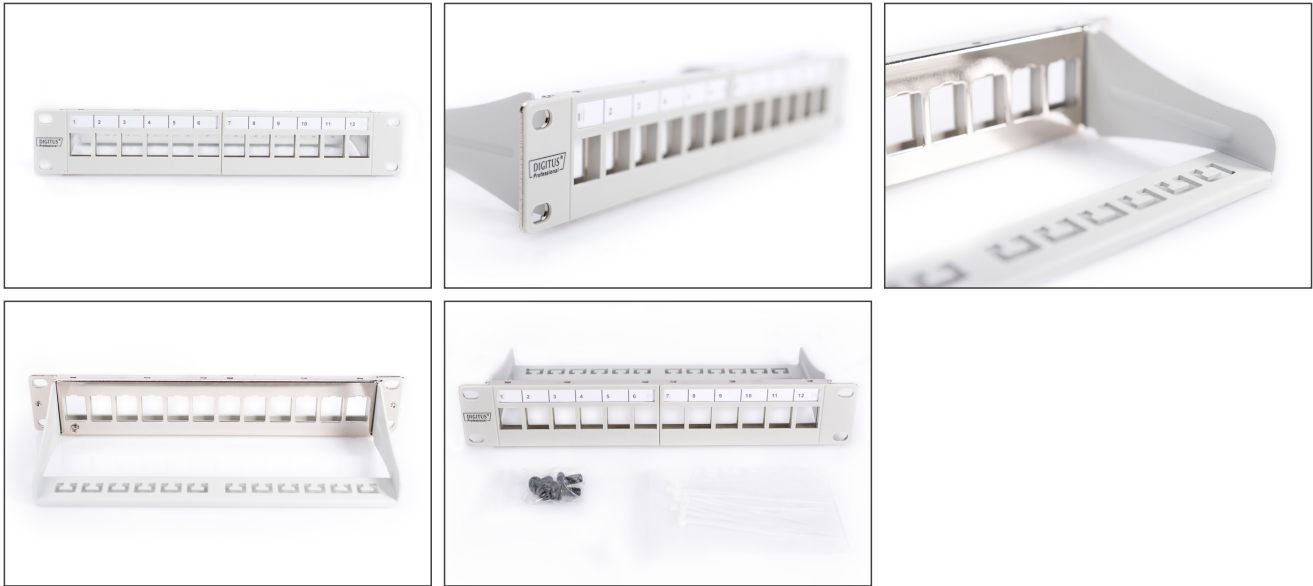
**Attributes**

- Color: gris claro, RAL 7035
- Puertos: 12
- Unidades: 1
- Categoría: CAT 6A

Logistics						
	Number (pcs)	Weight (kg)	Depth (cm)	Width (cm)	Height (cm)	cm <sup>3</sup>
Packaging Unit Carton	20	8.30	52.00	28.00	30.00	43,680.00
Packaging Unit Inside	1	0.42	12.00	27.00	5.50	1,782.00
Packaging Unit Single	1	0.42	12.00	27.00	5.50	1,782.00
Net single without Packaging	1	0.30	1.20	25.40	4.40	0.00

**More images:**





**Safety notes**

- Proteger el producto de la humedad

**EU responsible person**

EU based economic operator ensuring the product complies with the required regulations.

ASSMANN Electronic GmbH  
 Auf dem Schüffel 3  
 Lüdenscheid, Germany  
<https://www.assmann.com>  
[info@assmann.com](mailto:info@assmann.com)