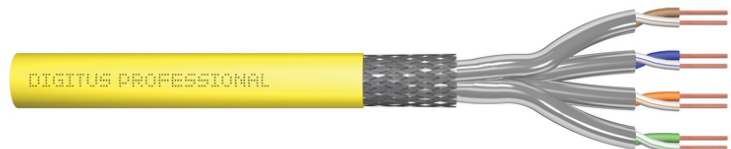


DIGITUS Adequado para a construção de cablagem estruturada na área secundária e terciária.

DK-1743-A-VH-10-LD
EAN 4016032455387



CAT 7A S-FTP installation cable, 1500 MHz Dca (EN 50575), AWG 23/1, 1000 m drum, sx, yellow

Melhor desempenho e melhor qualidade de ligação com a rede.

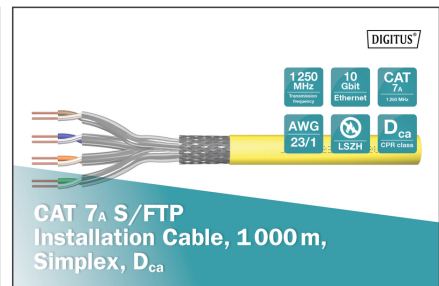
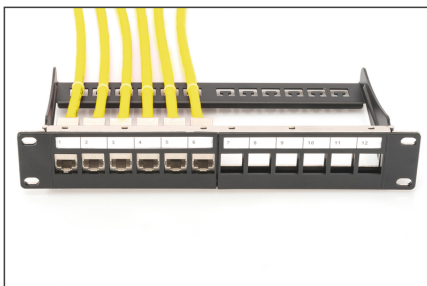
Future-oriented standards and high-end quality for your network.

- Número total de condutores isolados: 8, entrançados em 4 pares
- Código de cor: azul-branco, laranja-branco, verde-branco, castanho-branco
- Blindagem dos pares individuais: folha em poliéster oculta em alumínio, cobre 100%

- Assortment: Twisted Pair Installation Cables
- Category: CAT 7A
- Shielding: S-FTP, pairs in metal foil and braid shielding
- CPR: Dca
- Length: 1000 m
- Color: yellow
- Jacket: LSOH
- Structure: 4 x 2 AWG 23/1, solid twisted pair

Logistics						
	Number (pcs)	Weight (kg)	Depth (cm)	Width (cm)	Height (cm)	cm ³
Packaging Unit Carton	1	67.00	53.00	53.00	40.00	112,360.00
Packaging Unit Inside	1	67.00	53.00	53.00	40.00	112,360.00
Packaging Unit Single	1	67.00	53.00	53.00	40.00	112,360.00
Net single without Packaging	1	0.00	0.00	0.00	0.00	0.00

More images:



DK-1743-A-VH-10-LD // CAT 7, S/FTP Installation Cable, 1.000m, Simplex, D₄

Anwendungsbeispiel
Example of use

DK-1743-A-VH-10-LD // CAT 7, S/FTP Installation Cable, 1.000m, Simplex, D₄

Kabelquerschnitt
Cable cross section

Digitus-Produkt-Informationen

Anwendungsbereich	Rezeiv-Gesend, Simplex-Modi, Daten-Übertragung	Physikalische Spezifikationen/Physical Properties	Umwelttemperatur	0°C bis 60°C
Bestandteile	1000m, 1000m, 1000m, 1000m, 1000m	Lebensdauer	10 Jahre	
Normen	ISO/IEC 11801, ISO/IEC 61904, ISO/IEC 11801-1, ISO/IEC 11801-2, ISO/IEC 11801-3, ISO/IEC 11801-4, ISO/IEC 11801-5, ISO/IEC 11801-6, ISO/IEC 11801-7, ISO/IEC 11801-8, ISO/IEC 11801-9, ISO/IEC 11801-10, ISO/IEC 11801-11, ISO/IEC 11801-12, ISO/IEC 11801-13, ISO/IEC 11801-14, ISO/IEC 11801-15, ISO/IEC 11801-16, ISO/IEC 11801-17, ISO/IEC 11801-18, ISO/IEC 11801-19, ISO/IEC 11801-20, ISO/IEC 11801-21, ISO/IEC 11801-22, ISO/IEC 11801-23, ISO/IEC 11801-24, ISO/IEC 11801-25, ISO/IEC 11801-26, ISO/IEC 11801-27, ISO/IEC 11801-28, ISO/IEC 11801-29, ISO/IEC 11801-30, ISO/IEC 11801-31, ISO/IEC 11801-32, ISO/IEC 11801-33, ISO/IEC 11801-34, ISO/IEC 11801-35, ISO/IEC 11801-36, ISO/IEC 11801-37, ISO/IEC 11801-38, ISO/IEC 11801-39, ISO/IEC 11801-40, ISO/IEC 11801-41, ISO/IEC 11801-42, ISO/IEC 11801-43, ISO/IEC 11801-44, ISO/IEC 11801-45, ISO/IEC 11801-46, ISO/IEC 11801-47, ISO/IEC 11801-48, ISO/IEC 11801-49, ISO/IEC 11801-50, ISO/IEC 11801-51, ISO/IEC 11801-52, ISO/IEC 11801-53, ISO/IEC 11801-54, ISO/IEC 11801-55, ISO/IEC 11801-56, ISO/IEC 11801-57, ISO/IEC 11801-58, ISO/IEC 11801-59, ISO/IEC 11801-60, ISO/IEC 11801-61, ISO/IEC 11801-62, ISO/IEC 11801-63, ISO/IEC 11801-64, ISO/IEC 11801-65, ISO/IEC 11801-66, ISO/IEC 11801-67, ISO/IEC 11801-68, ISO/IEC 11801-69, ISO/IEC 11801-70, ISO/IEC 11801-71, ISO/IEC 11801-72, ISO/IEC 11801-73, ISO/IEC 11801-74, ISO/IEC 11801-75, ISO/IEC 11801-76, ISO/IEC 11801-77, ISO/IEC 11801-78, ISO/IEC 11801-79, ISO/IEC 11801-80, ISO/IEC 11801-81, ISO/IEC 11801-82, ISO/IEC 11801-83, ISO/IEC 11801-84, ISO/IEC 11801-85, ISO/IEC 11801-86, ISO/IEC 11801-87, ISO/IEC 11801-88, ISO/IEC 11801-89, ISO/IEC 11801-90, ISO/IEC 11801-91, ISO/IEC 11801-92, ISO/IEC 11801-93, ISO/IEC 11801-94, ISO/IEC 11801-95, ISO/IEC 11801-96, ISO/IEC 11801-97, ISO/IEC 11801-98, ISO/IEC 11801-99, ISO/IEC 11801-100			

Elektrische Eigenschaften/Electrical Properties

Leitungsart	Simplex
Leitungszahl	4
Leitungszahl pro Paar	2
Leitungszahl pro Leiter	1
Leitungszahl pro Leiterpaar	2
Leitungszahl pro Leiterpaarpaar	4
Leitungszahl pro Leiterpaarpaarpaar	8

Mechanische Eigenschaften/Mechanical Properties

Leitungszahl	4
Leitungszahl pro Paar	2
Leitungszahl pro Leiter	1
Leitungszahl pro Leiterpaar	2
Leitungszahl pro Leiterpaarpaar	4
Leitungszahl pro Leiterpaarpaarpaar	8

