

DIGITUS HP-HPE compatible mini GBIC (SFP) Module, 1.25 Gbps, 0.55 Km

DN-81000-04
EAN 4016032451808



1.25 Gbps SFP Module, Multimode, HPE-compatible LC Duplex Connector, 850nm, up to 550m, HPE

The DIGITUS® mini GBIC (SFP) transceiver modules offer highest quality and reliability. Whether from switch to switch, converter to switch, converter to converter or any else application: The wide product range of DIGITUS® modules makes possible a flexible usage of the fiber technology. The conformity to the MSA (Multi Source Agreement) standard ensures a compatibility to third party manufacturers.

The plug and play fiber connection

- HP-HPE compatible
- Mini GBIC SFP (Small Form Factor Pluggable) module
- High quality and excellent reliability
- 1.25 Gbps Maximum Data Rate
- Compliant to IEEE 802.3z Gigabit Standard
- Class 1 laser product compliant with EN 60825-1
- Easy plug-and-play installation
- MSA (Multi Source Agreement) compliant
- Hot pluggable
- Connector: 1x LC Duplex
- 1000Base-SX - For Short Haul
- Wavelength: 850nm

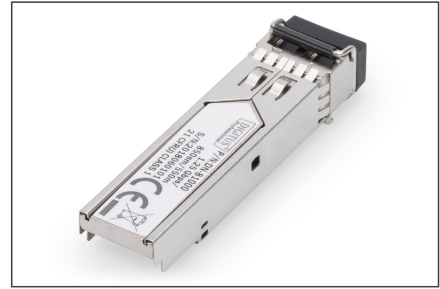
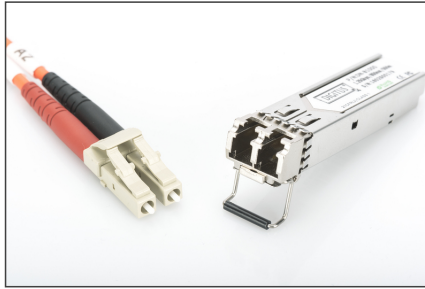
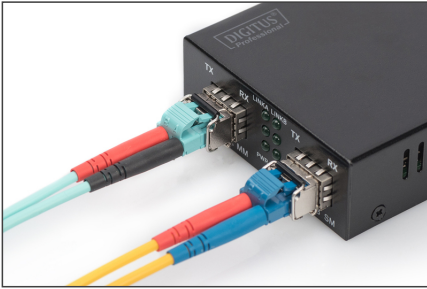
- Transmission power: minimum -8 dBm, maximum -3 dBm
- Sensitivity Receiving Power: Minimum -20 dBm
- For a Distance of up to 0.55km
- Suitable for 50/125µm and 62.5/125µm multimode fiber cables
- Safe fast-locking mechanism
- Operating temperature: 0 °C ~ 70 °C
- Compatible with the following manufacturers: Allied Telesis, Allnet, Avaya, CISCO, D-Link, Edimax, FINISAR, FORCE 10, Gigamon, Intellinet, KTI Networks, Level One, PLANET, Tenda, TP-Link, TRENDnet, Mikrotik, ENTERASYS, RIVERSTONE, Unifi, Ubiquiti, ZyXEL, ZTE
- Mode: Multimode
- Connector: LC
- Distance (km): 0.5
- Wavelength: 850 nm
- DDM Support: no
- Broadcasting Mode: Unidirectional
- Manufacturer compatibility: HP, Universal (MSA)
- Ethernet speed: Gigabit

Package contents

- SFP module

Logistics						
	Number (pcs)	Weight (kg)	Depth (cm)	Width (cm)	Height (cm)	cm³
Packaging Unit Carton	240	8.50	50.00	29.00	54.50	79,025.00
Packaging Unit Inside	30	1.06	7.00	20.00	30.00	4,200.00
Packaging Unit Single	1	0.04	3.10	11.80	9.00	329.22
Net single without Packaging	1	0.02	1.00	5.90	0.80	0.00

More images:



SFP Modules							
Product Number	DM Code	Speed	Distance	Connector	Mounting	Operating Temperature	Industrial Version
Fast Ethernet							
DM-0101	42180000040	10 Gbps	2 km	LC Multimode Duplex	191mm	0 to +70 °C	✓
DM-0102	42180000070	10 Gbps	55 km	LC Singlemode Duplex	191mm	0 to +70 °C	✓
DM-0104	42180000070	10 Gbps	55 km	LC Singlemode Duplex	191mm	0 to +70 °C	✓
10G SFP+							
DM-0105	42180000080	10 Gbps	100 m	LC Multimode Duplex	191mm	0 to +70 °C	✓
DM-0106	42180000080	10 Gbps	200 m	LC Multimode Duplex	191mm	0 to +70 °C	✓
DM-0107	42180000080	10 Gbps	250 m	LC Multimode Duplex	191mm	0 to +70 °C	✓
DM-0108	42180000080	10 Gbps	300 m	LC Multimode Duplex	191mm	0 to +70 °C	✓
DM-0109	42180000080	10 Gbps	350 m	LC Multimode Duplex	191mm	0 to +70 °C	✓
DM-0110	42180000080	10 Gbps	400 m	LC Multimode Duplex	191mm	0 to +70 °C	✓
DM-0111	42180000080	10 Gbps	450 m	LC Multimode Duplex	191mm	0 to +70 °C	✓
DM-0112	42180000080	10 Gbps	500 m	LC Multimode Duplex	191mm	0 to +70 °C	✓
DM-0113	42180000080	10 Gbps	550 m	LC Multimode Duplex	191mm	0 to +70 °C	✓
DM-0114	42180000080	10 Gbps	600 m	LC Multimode Duplex	191mm	0 to +70 °C	✓
DM-0115	42180000080	10 Gbps	650 m	LC Multimode Duplex	191mm	0 to +70 °C	✓
DM-0116	42180000080	10 Gbps	700 m	LC Multimode Duplex	191mm	0 to +70 °C	✓
DM-0117	42180000080	10 Gbps	750 m	LC Multimode Duplex	191mm	0 to +70 °C	✓
DM-0118	42180000080	10 Gbps	800 m	LC Multimode Duplex	191mm	0 to +70 °C	✓
DM-0119	42180000080	10 Gbps	850 m	LC Multimode Duplex	191mm	0 to +70 °C	✓
DM-0120	42180000080	10 Gbps	900 m	LC Multimode Duplex	191mm	0 to +70 °C	✓