

DIGITUS 24-Port Fast Ethernet PoE Networkswitch, 19 Zoll, unmanaged, 2 Uplink Ports, SFP, 370 W, af/at

DN-95343
EAN 4016032451242



Fast Ethernet PoE Switch 24-port PoE + 2 Combo, 370W PoE budget

The DIGITUS® Fast Ethernet PoE switches are designed for medium to large network systems. The PoE function and the 19" size enable an uncomplicated integration into your network. The switches are a great choice to improve the performance and efficiency of your network.

Integrated Power over Ethernet (PoE) for small and medium network environments

- 24-port 10/100Base-TX with PoE support
- 2-port Combo Gigabit TP/SFP Uplink
- Meets the network standards IEEE 802.3, IEEE802.3u, IEEE802.3ab, IEEE802.3z, IEEE802.3x, IEEE802.3af, IEEE802.3at
- PoE current output 55V DC, max. 30 W per port
- PoE power supply mode A, PIN 1/2(+), 3/6(-)
- Supports non-blocking, non-head-of-line forwarding
- Store and forward technology for optimized data transfer
- Automatic speed and half/full duplex recognition/adjustment
- Auto MDI/MDI-X function
- 16K MAC addresses
- Integrated power supply unit
- Power supply: 390 watts
- Maximum PoE output power: 370 watts

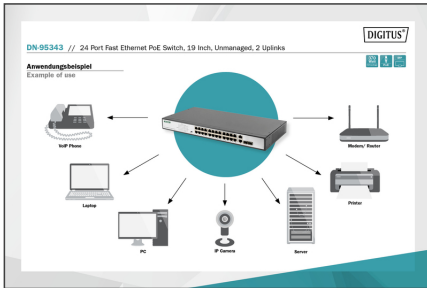
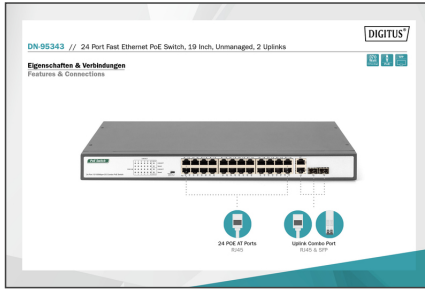
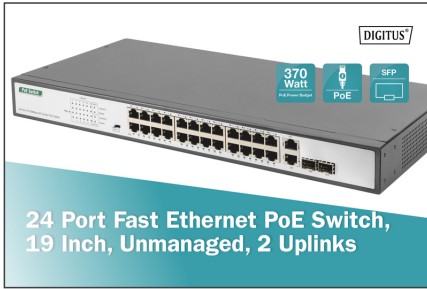
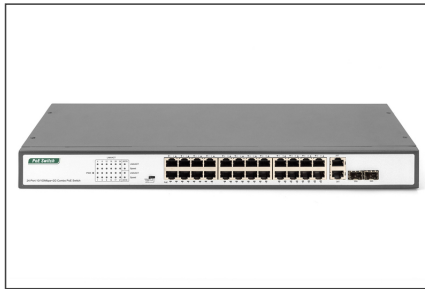
- Power Input Spec: AC:100-240V
- Power consumption: 11.1W
- Number of ports: 24
- PoE Power budget: 370 W
- PoE standard: IEEE802.3at (PoE+)
- Ethernet speed: Fast Ethernet
- Industrial usage: no
- Installation type: 19 inch, Desktop
- Managed: no
- Number of ports (Uplink): 2
- Outdoorsuitable: no
- PoE (Power over Ethernet): yes
- Protection against vandalism: no
- Uplink port connection: RJ45/SFP
- VLAN: yes

Package contents

- 24-port Fast Ethernet PoE Switch
- Quick start guide
- Power Cable
- Mounting accessories

Logistics						
	Number (pcs)	Weight (kg)	Depth (cm)	Width (cm)	Height (cm)	cm³
Packaging Unit Carton	3	14.00	39.00	51.00	34.00	67,626.00
Packaging Unit Inside	1	4.67	31.50	49.30	7.20	11,181.20
Packaging Unit Single	1	4.67	31.50	49.30	7.20	11,181.20
Net single without Packaging	1	3.60	27.00	44.00	4.00	0.00

More images:



Safety notes

- This product is intended for indoor use only.
- Read all instructions and follow all warnings and instructions on the device.
- Do not place this appliance on an unstable surface (such as a trolley, stand, table, etc.).
- Do not use this appliance near water.
- Do not place this appliance near or above a radiator.
- The housing is equipped with openings for heat dissipation and ventilation. To prevent overheating during operation, the ventilation openings must not be blocked or covered.
- Do not place the appliance on a soft surface (e.g. bed, sofa, blanket, etc.). This will block the ventilation.
- The appliance must not be installed in a closed environment if adequate ventilation is not guaranteed.
- Do not spray any liquids onto the appliance.
- Disconnect the mains plug before cleaning. Do not use any liquid or foam cleaners.
- Clean the appliance with a damp cloth.
- Connect the device according to the power supply on the rating plate.
- To prevent damage to the appliance, it is important that all appliances are properly earthed.
- Do not place any objects on the power cable and lay it in such a way as to avoid tripping hazards.
- Use a surge protector, a regulator or an uninterruptible power supply (UPS) to protect your system from sudden, temporary and reduced power.
- Secure the system cable and mains cable properly and ensure that no objects are pressing on the cable.
- Do not insert any objects into the appliance through the openings in the housing. There is a risk of a short circuit, which can lead to fire or electric shock.
- Do not attempt to repair the appliance yourself. Always contact an authorized customer service centre.
- If any of the following conditions occur, unplug the appliance and return it to an authorized service centre for repair
- The mains cable, power supply unit or plug for the power supply is damaged or worn;
- Liquid has penetrated the appliance;
- The device has been exposed to rain or water;
- The device has been dropped or the housing has been damaged;
- The function of the device has obviously changed;
- The appliance cannot be operated as described in the operating instructions.

EU responsible person

EU based economic operator ensuring the product complies with the required regulations.
 ASSMANN Electronic GmbH
 Auf dem Schüffel 3
 Lüdenscheid, Germany

<https://www.assmann.com>
info@assmann.com