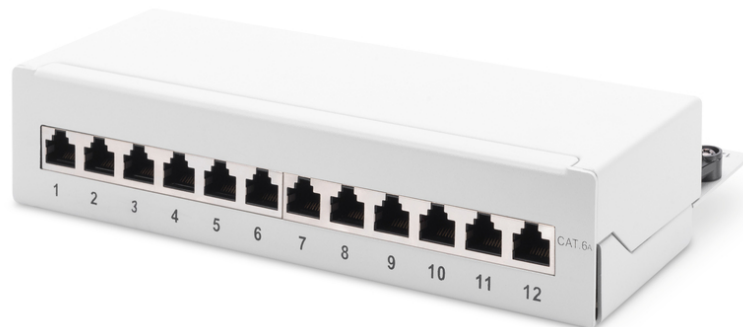


# DIGITUS Desktop CAT 6A, Class EA patch panel, shielded, grey

DN-91612SD-EA-G  
EAN 4016032444886



### Desktop CAT 6A, patch panel, shielded Class EA, 12-port RJ45, 8P8C, LSA, grey RAL 7035

The Desktop Patch Panels from DIGITUS® are the ideal solution for SoHo applications (Smart Office Home Office). The fully shielded RJ45 sockets provide an optimal stability for your cables with best performances.

#### Applicable for SOHO solutions

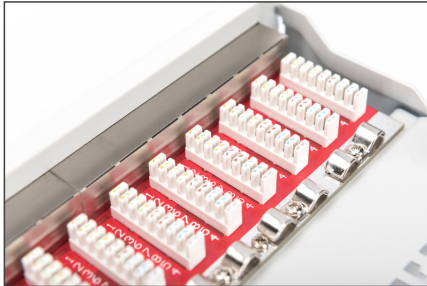
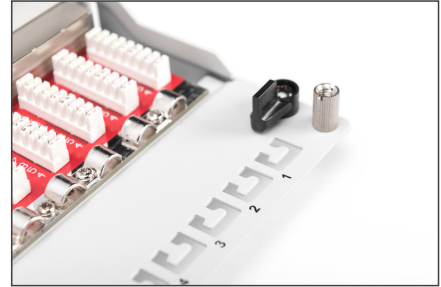
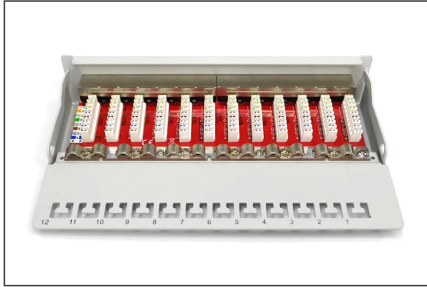
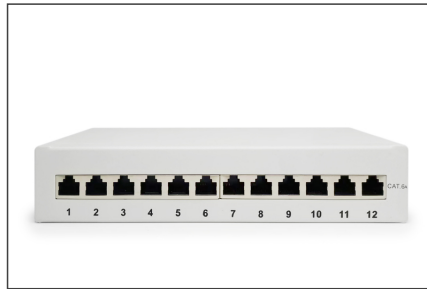
- Transmission properties: Category 6A, Class EA
- Area of application: Up to 500 MHz, 10GBase-T
- Norms: ISO/IEC 11801 2nd Ed., EN 50173-1, EIA/TIA 568-C, 802.3af, 802.3at PoE+
- General properties:
- Suitable for surface mount installation
- RJ45 female, 8P8C
- Cable installation via LSA strips, color coded according to EIA/TIA 568 A & B
- Cable fixing with smart cable ties
- Central ground connection
- 360° shield coverage
- Mechanical properties:
- Housing material: 1.5 mm galvanic cold rolled steel, acc. to EN1.4301, UNS S30400, AISI 304 and LMSAD110
- RJ45 female material: ABS UL 94V-0
- RJ45 female contact: Tinned phosphor bronze, 0.5 µ gold-plated contact

- RJ45 shielding: Tinned bronze
- LSA termination clamp: Krone LSA+, UL 94V-2, zinc plated phosphor bronze
- Ground wire: Not included
- Conductor plate: FR4, UL 94V-0
- Physical properties:
- Insertion force: 30N max. (IEC 60603-7-5)
- Retention strength: 7.7 kg between jack and plug
- Operation temperature: -20° C to +70 °C (ISO/IEC 11801, EN 50173-1, ANSI/TIA/EIA 568 C)
- Mating cycles female: > 750 acc. to ISO/IEC 11801, IEC 60603-7-5
- Clamp: > 200 acc. to ISO/IEC 11801, IEC 60603-7-5
- IDC wire size: 22 – 26 AWG solid and stranded conductor
- Insulation resistance: > 500 MOhm
- Contact resistance: < 20 MilliOhm
- Dielectric strength: 1000 VDC (Contact/Contact), 1500 VDC (Contact/Ground)
- Color grey (RAL 7035)
- Color: light grey, RAL 7035
- Ports: 12
- Units: 1
- Category: CAT 6A

#### Package contents

- Desktop panel
- Mounting instruction
- Cable ties

Logistics						
	Number (pcs)	Weight (kg)	Depth (cm)	Width (cm)	Height (cm)	cm <sup>3</sup>
Packaging Unit Carton	20	17.50	29.00	55.00	32.00	51,040.00
Packaging Unit Inside	1	0.88	12.00	26.50	6.00	1,908.00
Packaging Unit Single	1	0.88	12.00	26.50	6.00	1,908.00
Net single without Packaging	1	0.72	10.80	21.70	4.50	0.00

**More images:****Safety notes**

- Protect product from moisture
- Avoid antistatic charging when installing the product
- Observe the specifications of the raw cable manufacturer during installation

**EU responsible person**

EU based economic operator ensuring the product complies with the required regulations.

ASSMANN Electronic GmbH  
Auf dem Schüffel 3  
Lüdenscheid, Germany  
<https://www.assmann.com>  
[info@assmann.com](mailto:info@assmann.com)