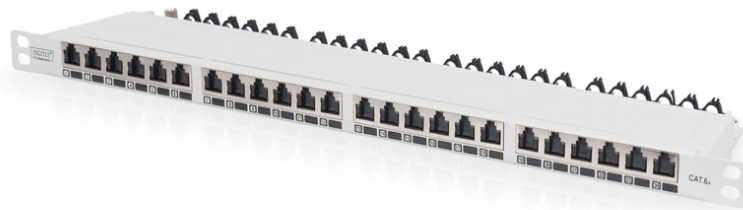


DIGITUS CAT 6A, Class EA High Density Patch Panel, shielded

DN-91624S-SL-EA-G
EAN 4016032444848



CAT 6A EA patch panel, shielded, 24-port RJ45 dust cover, 8P8C, 0.5U, grey RAL 7035

The DIGITUS® 24-port 0.5U Patch Panel offers a high density. As the panel is only 0.5U in height, it allows to present 48 ports on 1U (2 panels with 24 ports each) which can be installed.

Save a lot of space (only 0.5U) - With shutters for dust protection - Best performance and link quality for your network

- Transmission properties: Category 6A, Class EA
- Area of application: Up to 500 MHz, 10GBase-T
- Norms: ISO/IEC 11801 2nd Ed., EN 50173-1, EIA/TIA 568-C, 802.3af, 802.3at PoE+
- General properties:
- Suitable for 483 mm (19") cabinet mounting
- RJ45 female, 8P8C
- Cable installation via LSA strips, color coded according to EIA/TIA 568 A & B
- Cable fixing with smart cable ties
- Central ground connection
- 360° shield coverage
- Integrated dust cover
- Mechanical properties:
- Housing material: 1.5 mm galvanic cold rolled steel, acc. to EN1.4301, UNS S30400, AISI 304 and LMSAD110

- RJ45 female material: ABS UL 94V-0
- RJ45 female contact: Tinned phosphor bronze, 0.5 µ gold-plated contact
- RJ45 shielding: Tinned bronze
- LSA termination clamp: Krone LSA+, UL 94V-2, zinc plated phosphor bronze
- Ground wire: Not included
- Conductor plate: FR4, UL 94V-0
- Physical properties:
- Insertion force: 30N max. (IEC 60603-7-5)
- Retention strength: 7.7 kg between jack and plug
- Operation temperature: -20° C to +70 °C (ISO/IEC 11801, EN 50173-1, ANSI/TIA/EIA 568 C)
- Mating cycles female: > 750 acc. to ISO/IEC 11801, IEC 60603-7-5
- Clamp: > 200 acc. to ISO/IEC 11801, IEC 60603-7-5
- IDC wire size: 22 – 26 AWG solid and stranded conductor
- Insulation resistance: > 500 MOhm
- Contact resistance: < 20 MilliOhm
- Dielectric strength: 1000 VDC (Contact/Contact), 1500 VDC (Contact/Ground)
- Colour: Grey RAL7035
- Color: light grey, RAL 7035
- Ports: 24
- Units: 0
- Category: CAT 6A

| Logistics | | | | | | |
|------------------------------|--------------|-------------|------------|------------|-------------|-----------|
| | Number (pcs) | Weight (kg) | Depth (cm) | Width (cm) | Height (cm) | cm³ |
| Packaging Unit Carton | 10 | 9.80 | 25.00 | 54.00 | 23.00 | 31,050.00 |
| Packaging Unit Inside | 1 | 0.98 | 13.00 | 51.50 | 3.50 | 2,343.25 |
| Packaging Unit Single | 1 | 0.98 | 13.00 | 51.50 | 3.50 | 2,343.25 |
| Net single without Packaging | 1 | 1.10 | 9.60 | 48.30 | 2.20 | 0.00 |

More images:

