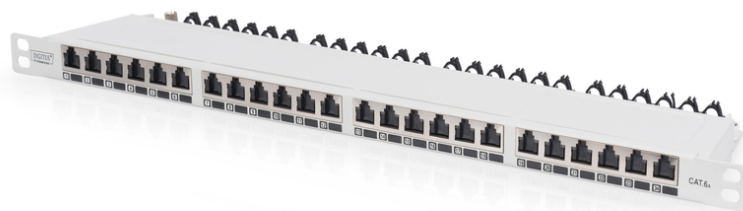


# DIGITUS DIGITUS CAT 6a Class EA патч-панель, экранированная

DN-91624S-SL-EA-G  
EAN 4016032444848



**CAT 6A EA patch panel, shielded, 24-port RJ45 dust cover, 8P8C, 0.5U, grey RAL 7035**

The DIGITUS® 24-port patch panel offers a very high packing density with only 0.5 U. This means that up to 48 ports can be implemented on 1 U with two 0.5 U panels. The patch panel is shielded and equipped with dust protection caps on the RJ45 sockets. The 360° shield contact of the cables ensures the best performance characteristics. The quick-release fastener on the housing ensures easy and tool-free access to the LSA cutting terminals.

**Очень компактный (только 0,5U) – с пылепредохранительными колпачками – отличные работоспособность и качество связи для Вашей сети**

- Общие свойства:

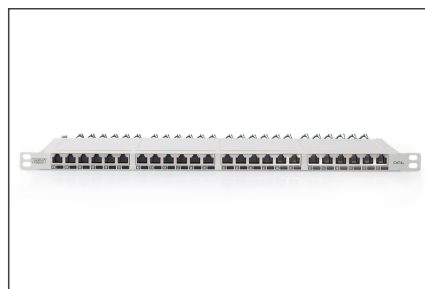
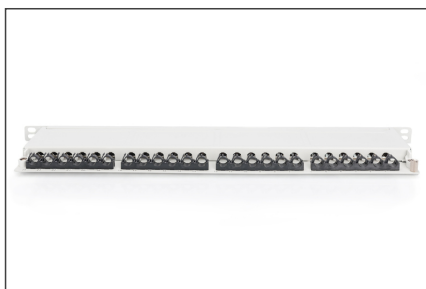
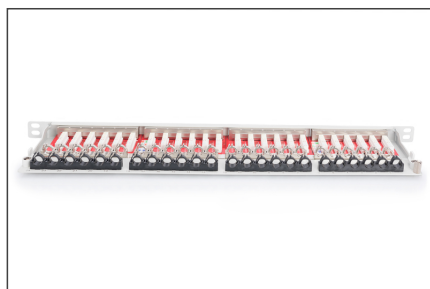
- Подключение кабеля посредством зажимов LSA, цветовая кодировка в соответствии с EIA/TIA 568 A & B
- Соединитель для централизованного заземления
- Перекрытие экрана 360°
- Встроенная пылезащитная шторка
- Механические свойства
- Физическое описание

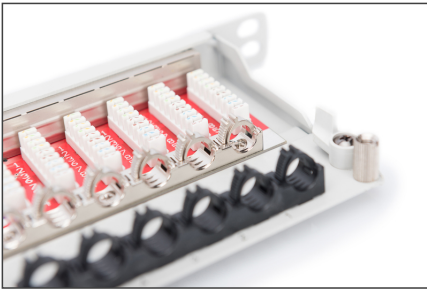
**Attributes**

- Color: light grey, RAL 7035
- Ports: 24
- Units: 0
- Category: CAT 6A

Logistics						
	Number (pcs)	Weight (kg)	Depth (cm)	Width (cm)	Height (cm)	cm³
Packaging Unit Carton	10	9.80	25.00	54.00	23.00	31,050.00
Packaging Unit Inside	1	0.98	13.00	51.50	3.50	2,343.25
Packaging Unit Single	1	0.98	13.00	51.50	3.50	2,343.25
Net single without Packaging	1	1.10	9.60	48.30	2.20	0.00

**More images:**



**Safety notes**

- Protect product from moisture
- Avoid antistatic charging when installing the product
- Observe the specifications of the raw cable manufacturer during installation

**EU responsible person**

EU based economic operator ensuring the product complies with the required regulations.

ASSMANN Electronic GmbH  
Auf dem Schüffel 3  
Lüdenscheid, Germany  
<https://www.assmann.com>  
[info@assmann.com](mailto:info@assmann.com)