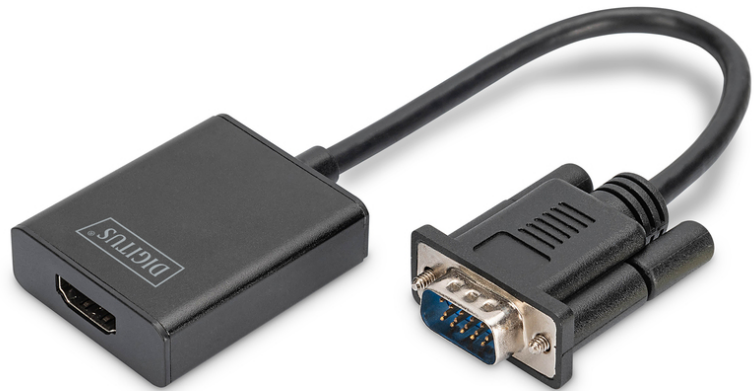


# DIGITUS VGA - HDMI Converter

DA-70473  
EAN 4016032444213



**VGA to HDMI Converter + Audio (3.5mm) Full HD (1080p), cable type (15 cm), black**

The Digitus VGA to HDMI Converter converts your analog VGA signal to a digital HDMI signal. The conversion enables you to easily connect devices having only a VGA port to an HDMI monitor, a TV set or a projector. The converter is equipped with a 3.5 mm audio jack since the VGA input can play back only a video signal. Any existing stereo signal is simultaneously converted and integrated into the HDMI signal. This makes it possible to play back the audio signals via HDMI on your TV set.

**Converts your analog VGA signal to a digital HDMI signal**

- Converts video and audio signals from VGA to HDMI
- Connect older devices with a VGA port to TV sets, monitors or projectors with an HDMI port
- Additional audio transmission (3.5 mm jack)
- Power supply via USB
- No software or driver installation is required
- Max. resolution: Full HD 1920x1080p / 60Hz
- Input: VGA + Stereo Audio

- Output: HDMI
- Cable length: 15 cm
- HDMI transmission rate: 6.75 Gbps
- Bandwidth 225 MHz/ 1.65 Gbps per channel (6.75 Gbps total)
- The resolutions suitable for the converter depend on your device/ your graphics card
- Dimensions: L 4.5 x W 4.5 x H 1.5 cm
- Weight: 50 g
- Color: black

**Attributes**

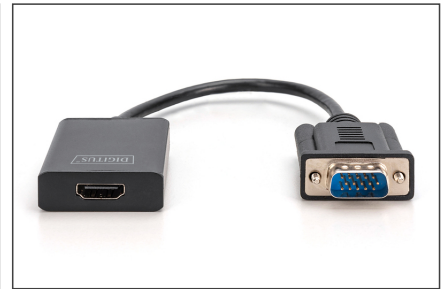
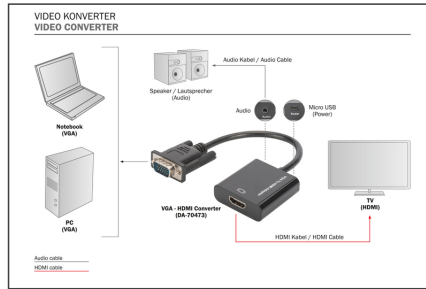
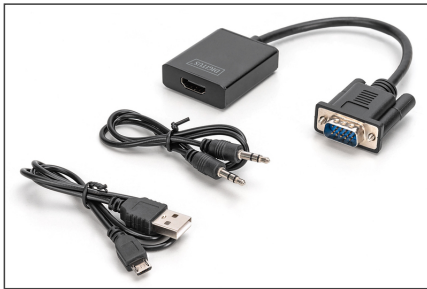
- HDTV Resolution max.: 1920 x 1080 Pixel, 60Hz
- HDTV Standard: Full HD
- Audio: yes
- Signal input: VGA
- Signal output: HDMI

**Package contents**

- VGA - HDMI Converter
- Audio cable (3.5 mm), 1.0 m
- Micro USB cable, 1.0 m

Logistics						
	Number (pcs)	Weight (kg)	Depth (cm)	Width (cm)	Height (cm)	cm³
Packaging Unit Carton	60	8.60	52.00	27.00	26.00	36,504.00
Packaging Unit Inside	1	0.14	26.50	7.50	2.30	457.13
Packaging Unit Single	1	0.14	26.50	7.50	2.30	457.13
Net single without Packaging	1	0.05	4.50	4.50	1.50	0.00

**More images:**



**Safety notes**

- If the device is powered by a plug-in power supply, ensure that the power adapter is connected correctly and meets the specified requirements (e.g. voltage and current).
- Only use certified CAT5e or CAT6 cables to ensure stable signal transmission.
- For particularly long cable runs or in environments prone to interference, it is recommended to use shielded network cables.
- Make sure that all connections are tight and secure to avoid loose contacts that could affect the signal quality. Make sure that the HDMI and Ethernet connections are connected correctly.
- Make sure that the CAT cable is not laid near high-voltage power lines or other strong sources of electromagnetic interference to avoid signal interference.
- Only operate the device within the specified temperature range.
- Do not use the device outdoors or in damp or wet environments
- Check all connections and cables regularly for wear or damage. Cables and connections can wear out, especially with frequent use or long installations, which can lead to poor signal quality or system failure.

**EU responsible person**

EU based economic operator ensuring the product complies with the required regulations.

ASSMANN Electronic GmbH  
 Auf dem Schüffel 3  
 Lüdenscheid, Germany  
<https://www.assmann.com>  
[info@assmann.com](mailto:info@assmann.com)