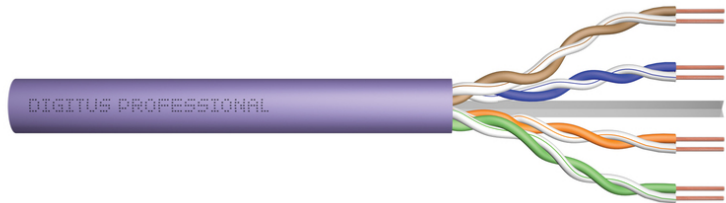


DIGITUS Cat.6 U/UTP installation cable, 500 m, Cca

DK-1615-VH-5
EAN 4016032442257



CAT 6 U-UTP installation cable, 250 MHz Cca (EN 50575), AWG 23/1, 500m drum, simplex, pu

The Digitus® Professional Cat.6 U/UTP installation cable is characterized by the following cable construction 4x2x AWG23/1 and reaches a transmission frequency up to 250 MHz. The halogen free cable jacket is conform to the standard IEC 60332-3-24, FRNC-C, LSZH-3 and CPR Euro class Cca. The cable is suitable for building structured cabling in the secondary and tertiary area. Compliant with the following standards ISO/IEC 11801, DIN EN 50173, DIN EN 50288-6-1.

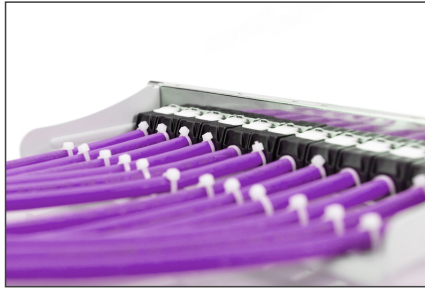
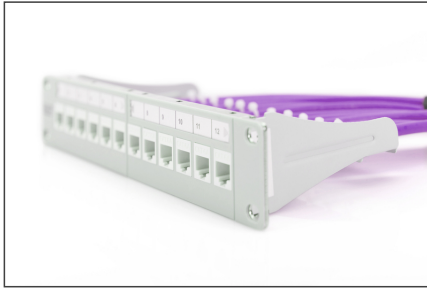
Future-oriented standards and high-end quality for your network.

- Physical properties:
- Conductor: Bare annealed copper, solid AWG 23/1
- Insulation: HD-PE (High Density Polyethylene)
- Total number of insulated conductors: 8, twisted in 4 pairs
- Color code: Blue-white, orange-white, green-white, brown-white
- Individual pair shield: None
- Overall shielding: None
- Outer sheath: Eca to B2ca acc. to EN 50575; LSZH
- Outer sheath diameter (nominal): 0,5 mm (Eca); 0,6 mm (Dca); 1,0 mm (Cca); 1,0 mm (B2ca)
- Outer sheath color: Purple (RAL 4005)
- Mechanical properties:
- Tensile loading: 150N max.
- Dynamic bending radius: 8x AD mm min.
- Static bending radius: 4x AD mm min.

- Shipping- and storage temperature range: -20 °C up to +60 °C
- Operating temperature range: -20 °C up to +75 °C
- Installation temperature range: 0 °C up to +50 °C
- Overall diameter Simplex (nominal): 6,1 mm (Eca); 6,3 mm (Dca); 6,8 mm (Cca); 6,8 mm (B2ca)
- Weight (kg/km): 41 kg (Eca); 42 kg (Dca); 44 kg (Cca); 44 kg (B2ca)
- Electrical properties:
- Impedance: 100±50hm @ 1 - 250MHz
- Capacitance: 40 pF/m nominal @ 800 Hz
- Capacitance unbalance (pair-ground): 1.5 pF/m max. @ 1 KHz
- Insulation resistance: 5 GOhm x km min.
- DC loop resistance: 147 Ohm/km max. (2% max. resistance unbalance)
- Voltage resistance: 72 Vdc max.
- Coupling attenuation: CA-Type 3
- Signal propagation delay: 535 nS/100 m max.
- Propagation delay: 20 nS/100 m max.
- Separating class: „b" gem. EN 50174-2
- NVP: 69%
- Assortment: Twisted Pair Installation Cables
- Category: CAT 6
- Shielding: U-UTP, unshielded
- CPR: Cca
- Length: 500 m
- Color: violet
- Jacket: LSOH
- Structure: 4 x 2 AWG 23/1, solid twisted pair

| Logistics | | | | | | |
|------------------------------|--------------|-------------|------------|------------|-------------|-----------|
| | Number (pcs) | Weight (kg) | Depth (cm) | Width (cm) | Height (cm) | cm³ |
| Packaging Unit Carton | 1 | 24.00 | 39.50 | 38.00 | 27.50 | 41,277.50 |
| Packaging Unit Inside | 1 | 24.00 | 0.00 | 0.00 | 0.00 | 0.00 |
| Packaging Unit Single | 1 | 24.00 | 37.00 | 37.00 | 31.00 | 42,439.00 |
| Net single without Packaging | 1 | 23.00 | 36.00 | 36.00 | 27.00 | 0.00 |

More images:



DIGITUS

- AWG 23/1
- 250 MHz
- 1 Gbit Ethernet
- CAT 6
- 20°/± 75°
- LSZH
- C_{ca} CPR class

CAT 6 U/UTP Installation Cable, 500 m, Simplex, C_{ca}

DIGITUS
DK-1615-VH-S // CAT 6 U/UTP Installation Cable, 500m, Simplex, C_{ca}

Anwendungsbereich
Example of use

DIGITUS
DK-1615-VH-S // CAT 6 U/UTP Installation Cable, 500m, Simplex, C_{ca}

Kabelquerschnitt
Cable cross section

DIGITUS

| Produktdaten / Product Information | | Physikalische Spezifikationen / Physical Properties | |
|------------------------------------|--|---|------|
| Bezeichnung / Name | DIGITUS Cat.6 U/UTP Installation Cable, 500m, Simplex, C _{ca} | Länge / Length | 500m |
| Bezeichnung / Name | DIGITUS Cat.6 U/UTP Installation Cable, 500m, Simplex, C _{ca} | Kategorie / Category | 6 |
| Bezeichnung / Name | DIGITUS Cat.6 U/UTP Installation Cable, 500m, Simplex, C _{ca} | Kategorie / Category | 6 |
| Bezeichnung / Name | DIGITUS Cat.6 U/UTP Installation Cable, 500m, Simplex, C _{ca} | Kategorie / Category | 6 |

DIGITUS

Leitungseigenschaften / Transmission Properties

| AWG | AWG | MAX | PER-NEXT | AWG | AWG | AWG | AWG | AWG | AWG |
|-----|-----|-----|----------|-----|-----|-----|-----|-----|-----|
| 20 | 22 | 22 | 22 | 22 | 22 | 22 | 22 | 22 | 22 |
| 22 | 24 | 24 | 24 | 24 | 24 | 24 | 24 | 24 | 24 |
| 24 | 26 | 26 | 26 | 26 | 26 | 26 | 26 | 26 | 26 |
| 26 | 28 | 28 | 28 | 28 | 28 | 28 | 28 | 28 | 28 |

GHMT

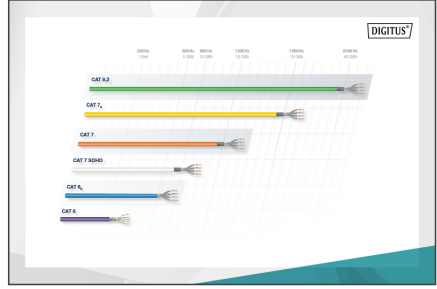
Certificate
No. 174347-2-21-0

Class E

Zertifikat
No. 174347-2-21-0

Klasse E

2-Category Ethernet, Patch, Class E
GHMT Type Approval



DIGITUS

| EN Normen / EN Standards | Bezeichnung / Name | Leitungseigenschaften / Properties | Adressierbarkeit / Addressability | Zusatzfunktionen / Additional functions |
|--------------------------|---------------------|------------------------------------|---|---|
| B2ca | Starbuck / Starbuck | 1+ | • 100MHz • 20MHz • 20MHz • 20MHz | • 100MHz • 20MHz • 20MHz • 20MHz |
| Cca | Hotch / Hotch | 3 | • 100MHz • 20MHz • 20MHz • 20MHz | • 100MHz • 20MHz • 20MHz • 20MHz |
| Dca | Mittel / Mittel | | | |
| Eca | Gering / Low | | | |
| Other | Cca, sta, d1, a1 | | | |

