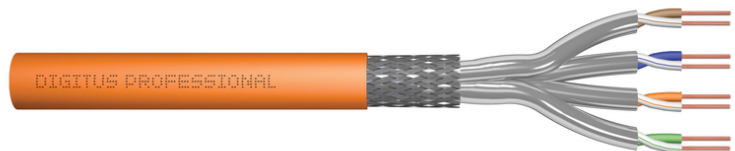


DIGITUS Cat.7 S/FTP installation cable, 500 m, simplex, Cca-s1a d1 a1

DK-1744-VH-5
EAN 4016032441731



CAT 7 S-FTP installation cable, 600 MHz Cca (EN 50575), AWG 23/1, 500 m drum, simplex, or

The Digitus Cat 7 installation cable is designed for use in the structured data center and the building cabling according to ISO/IEC 11801, DIN EN 50288-4-1, DIN EN 50173, IEC 60332-3-24, EN 50575. The cable is perfectly suitable for the transmission of both analog and digital data and also supports POE and POE+. The shielding structure is composed of single shielded pairs with a tinned copper braid, which ensures excellent shielding and electrical values.

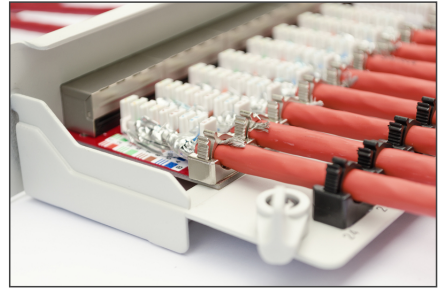
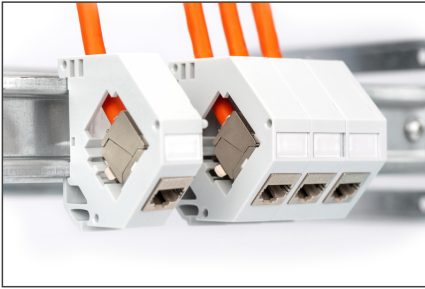
Future-oriented standards and high-end quality for your network.

- Physical properties:
- Conductor: Bare annealed copper, solid AWG 23/1
- Insulation: SFS-PE (Foam-Skin Polyethylene)
- Total number of insulated conductors: 8, twisted in 4 pairs
- Color code: Blue-white, orange-white, green-white, brown-white
- Individual pair shielding: Aluminum foil, providing 100 % coverage
- Overall shielding: Copper braid
- Outer sheath: Cca-s1a d1 a1.acc. to EN 50575; LSZH
- Outer sheath diameter (nominal): 0,50 mm (Eca); 0,52 mm (Dca); 0,60 mm (Cca); 0,60 (B2ca)
- Color: Orange (RAL 2008)
- Mechanical properties:
- Tensile loading: 150N max.
- Dynamic bending radius: 8x AD mm min.
- Static bending radius: 4x AD mm min.

- Shipping- and storage temperature range: -20 °C up to +60 °C
- Operating temperature range: -20 °C up to +50 °C
- Installation temperature range: 0 °C up to +50 °C
- Electrical properties:
- Impedance: 100±15 Ohm @ 4 - 1000 MHz; 100±25 OHM @ 100-600 MHz
- Capacitance: 45 pF/m nominal @ 1 KHz
- Capacitance unbalance (pair-ground): 1.6 pF/m max. @ 1 KHz
- Insulation resistance: 5 GOhm x km min.
- DC resistance: 95 Ohm/km max. (2% max. resistance unbalance)
- DC loop resistance: 190 Ohm/km max. (2% max. resistance unbalance)
- Voltage resistance: 72 Vdc max.
- Coupling attenuation: CA-Type 1b
- Signal propagation delay: 450 nS/100 m max.
- Propagation delay: 10 nS/100 m max.
- Separating class: "d" acc. to EN 50174-2
- NVP: 79%
- Flame spread: EN 60332-3-24 (LSOH-PVC)
- Assortment: Twisted Pair Installation Cables
- Category: CAT 7
- Shielding: S-FTP, pairs in metal foil and braid shielding
- CPR: Cca
- Length: 500 m
- Color: orange
- Jacket: LSOH
- Structure: 4 x 2 AWG 23/1, solid twisted pair

Logistics						
	Number (pcs)	Weight (kg)	Depth (cm)	Width (cm)	Height (cm)	cm ³
Packaging Unit Carton	1	27.00	54.00	54.00	34.00	99,144.00
Packaging Unit Inside	1	27.00	54.00	54.00	34.00	99,144.00
Packaging Unit Single	1	27.00	54.00	54.00	34.00	99,144.00
Net single without Packaging	1	55.00	54.00	54.00	34.00	0.00

More images:



CAT 7 S/FTP Installation Cable, 500m, Simplex, C_{ca}

- AWG 23/1
- 1200 MHz
- 10 Gbit Ethernet
- CAT 7 1000 m
- 20/7+50
- LSZH
- C_{ca} CPFL class

DK.1744-VH-5 // CAT 7 S/FTP Installation Cable, 500m, Simplex, C_{ca}

Anwendungsbeispiel
Example of use

DK.1744-VH-10 // CAT 7 S/FTP Installation Cable, 1000m, Simplex, D_{ca}

Kabelquerschnitt
Cable cross section

Produktkennlinien Produktinformationen

Produktkennlinie	Produktinformationen	Physikalische Spezifikationen/Physical Properties
DK.1744-VH-5	500m, Simplex, C _{ca}	...
DK.1744-VH-10	1000m, Simplex, D _{ca}	...

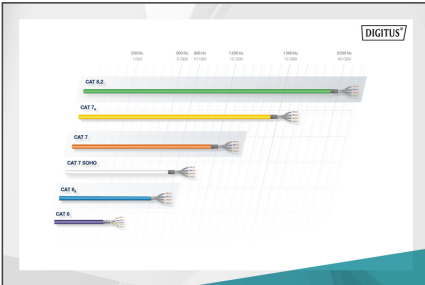
Leistungseigenschaften/Transmission Properties

MHz	ATT	MEET	PRE NEXT	AKR	AKR	PRE AKR	RL	RENEXT	PRE REEXT
1	2	36	76	76	76	76	26	76	76
10	10	31	71	71	71	71	21	71	71
100	10	24	64	64	64	64	14	64	64
1000	10	17	57	57	57	57	7	57	57

Certificate No. 161610-10-1

Zertifikat No. 161610-10

Category 7



GHMT Typen

Typ	Struktur	Leistungseigenschaften/Performance	Abgleich an verdrillten Paaren/Pair Matching	Zusatzfunktionen/Additional functions
B2 _{ca}	Stark hoch Strapaziert	1+	• Typenabgleich • Empfindliche Abschirmung • Typenabgleich	• Typenabgleich • Typenabgleich
C _{ca}	Misch Typ	3	• Typenabgleich • Typenabgleich	• Typenabgleich • Typenabgleich
D _{ca}	Mittel Typ	3	• Typenabgleich • Typenabgleich	• Typenabgleich • Typenabgleich
E _{ca}	Standard Typ	3	• Typenabgleich • Typenabgleich	• Typenabgleich • Typenabgleich

