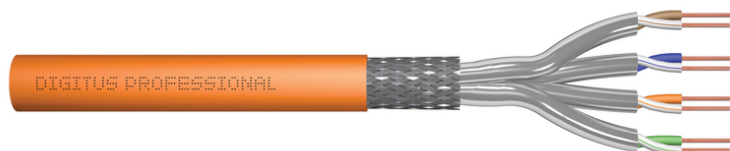


# DIGITUS Cat.7 S/FTP installation cable, 500 m, simplex, Cca-s1a d1 a1

DK-1744-VH-5  
EAN 4016032441731



### CAT 7 S-FTP installation cable, 600 MHz Cca (EN 50575), AWG 23/1, 500 m drum, simplex, or

The Digitus Cat 7 installation cable is designed for use in the structured data center and the building cabling according to ISO/IEC 11801, DIN EN 50288-4-1, DIN EN 50173, IEC 60332-3-24, EN 50575. The cable is perfectly suitable for the transmission of both analog and digital data and also supports POE and POE+. The shielding structure is composed of single shielded pairs with a tinned copper braid, which ensures excellent shielding and electrical values.

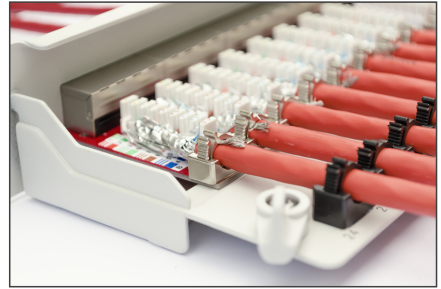
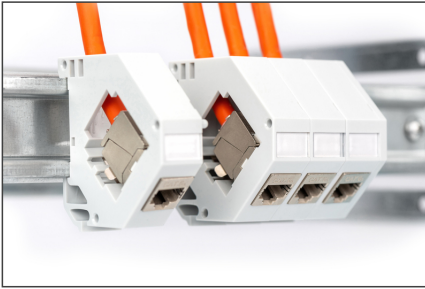
#### Future-oriented standards and high-end quality for your network.

- Physical properties:
- Conductor: Bare annealed copper, solid AWG 23/1
- Insulation: SFS-PE (Foam-Skin Polyethylene)
- Total number of insulated conductors: 8, twisted in 4 pairs
- Color code: Blue-white, orange-white, green-white, brown-white
- Individual pair shielding: Aluminum foil, providing 100 % coverage
- Overall shielding: Copper braid
- Outer sheath: Cca-s1a d1 a1.acc. to EN 50575; LSZH
- Outer sheath diameter (nominal): 0,50 mm (Eca); 0,52 mm (Dca); 0,60 mm (Cca); 0,60 (B2ca)
- Color: Orange (RAL 2008)
- Mechanical properties:
- Tensile loading: 150N max.
- Dynamic bending radius: 8x AD mm min.
- Static bending radius: 4x AD mm min.

- Shipping- and storage temperature range: -20 °C up to +60 °C
- Operating temperature range: -20 °C up to +50 °C
- Installation temperature range: 0 °C up to +50 °C
- Electrical properties:
- Impedance: 100±15 Ohm @ 4 - 1000 MHz; 100±25 OHM @ 100-600 MHz
- Capacitance: 45 pF/m nominal @ 1 KHz
- Capacitance unbalance (pair-ground): 1.6 pF/m max. @ 1 KHz
- Insulation resistance: 5 GOhm x km min.
- DC resistance: 95 Ohm/km max. (2% max. resistance unbalance)
- DC loop resistance: 190 Ohm/km max. (2% max. resistance unbalance)
- Voltage resistance: 72 Vdc max.
- Coupling attenuation: CA-Type 1b
- Signal propagation delay: 450 nS/100 m max.
- Propagation delay: 10 nS/100 m max.
- Separating class: "d" acc. to EN 50174-2
- NVP: 79%
- Flame spread: EN 60332-3-24 (LSOH-PVC)
- Assortment: Twisted Pair Installation Cables
- Category: CAT 7
- Shielding: S-FTP, pairs in metal foil and braid shielding
- CPR: Cca
- Length: 500 m
- Color: orange
- Jacket: LSOH
- Structure: 4 x 2 AWG 23/1, solid twisted pair

Logistics						
	Number (pcs)	Weight (kg)	Depth (cm)	Width (cm)	Height (cm)	cm <sup>3</sup>
Packaging Unit Carton	1	27.00	54.00	54.00	34.00	99,144.00
Packaging Unit Inside	1	27.00	54.00	54.00	34.00	99,144.00
Packaging Unit Single	1	27.00	54.00	54.00	34.00	99,144.00
Net single without Packaging	1	55.00	54.00	54.00	34.00	0.00

More images:



**CAT 7 S/FTP Installation Cable, 500m, Simplex, C<sub>ca</sub>**

- AWG 23/1
- 1200 MHz
- 10 Gbit Ethernet
- CAT 7 1000 mbit
- 20/7+500
- LSZH
- C<sub>ca</sub> CPFL class

**DK.1744-VH-5 // CAT 7 S/FTP Installation Cable, 500m, Simplex, C<sub>ca</sub>**

Anwendungsbeispiel  
Example of use

**DK.1744-VH-10 // CAT 7 S/FTP Installation Cable, 1000m, Simplex, D<sub>ca</sub>**

Kabelquerschnitt  
Cable cross section

**Produktinformationen Product Information**

<b>Bestandteile</b>	1x CAT 7 S/FTP Installation Cable, 500m, Simplex, C <sub>ca</sub>	<b>Physikalische Spezifikationen/Physical Properties</b>	<ul style="list-style-type: none"> <li>Material: PVC</li> <li>Farbe: Orange</li> <li>Stärke: 23 AWG</li> <li>Struktur: Simplex</li> <li>Isolation: 100% PVC</li> <li>Temperaturbereich: -20°C bis +70°C</li> <li>Flammverhalten: LSZH</li> <li>Umweltbedingungen: C<sub>ca</sub> CPFL class</li> </ul>
---------------------	---	--	--

**Leistungseigenschaften/Transmission Properties**

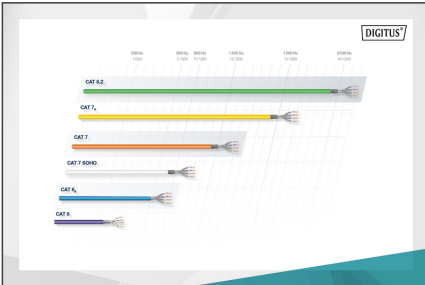
MHz	ATT	MEET	PM NEXT	AE	AE	PLACK	RL	RETRY	PER NEXT
1	2	30	70	70	70	20	20	20	20
10	10	30	70	70	70	20	20	20	20
100	10	30	70	70	70	20	20	20	20
1000	10	30	70	70	70	20	20	20	20

**Certificate**  
No. 161610-10-1

Category 7

**Zertifikat**  
No. 161610-10

Kategorie 7



**CEP Bestimmung**

Bestimmung	Druckverhältnis	Leitungsgeometrie	Adaptation	Zusammenfassung
B2 <sub>ca</sub>	Sehr hoch	1+	• Typenübergang	s
C <sub>ca</sub>	Hoch	3	• Typenübergang	d
D <sub>ca</sub>	Mittel	3	• Typenübergang	a
E <sub>ca</sub>	Gering	3	• Typenübergang	a

