

DIGITUS 8-Port Gigabit Switch, 10 inch, Unmanaged

DN-80114
EAN 4016032441007



Gigabit Ethernet Switch 8-port, 10 inch, unmanaged

The DIGITUS® 8-Port Gigabit Ethernet Switch provides 8 10/100/1000 Mbps RJ-45 ports with auto-negotiation. All ports support the Auto MDI/MDIX function, which eliminates the need for crossover cables and uplink ports. Low cost, ease of use and high performance are the strengths of the DIGITUS® Gigabit Ethernet 8-Port Switch, making it an excellent choice for your network. Thanks to its compact dimensions, the switch can be installed in 10-inch wall-mounted housings. The mounting brackets are included with the product.

Ideal for use in 10" wall-mounted enclosures

- 8 x 10/100/1000Base-T
- Complies with the network standards IEEE 802.3, IEEE 802.3u, IEEE 802.3ab and IEEE 802.3x
- Supports non-blocking, non-head-of-line forwarding
- Supports back-pressure and bandwidth control on each port
- Store-and-forward technology for optimized data transfer
- Automatic speed and half/full duplex detection/adjustment
- 20 / 200 / 2000 Mbit in full duplex mode
- Auto MDI/MDI-X function
- Backplane with 16Gbps

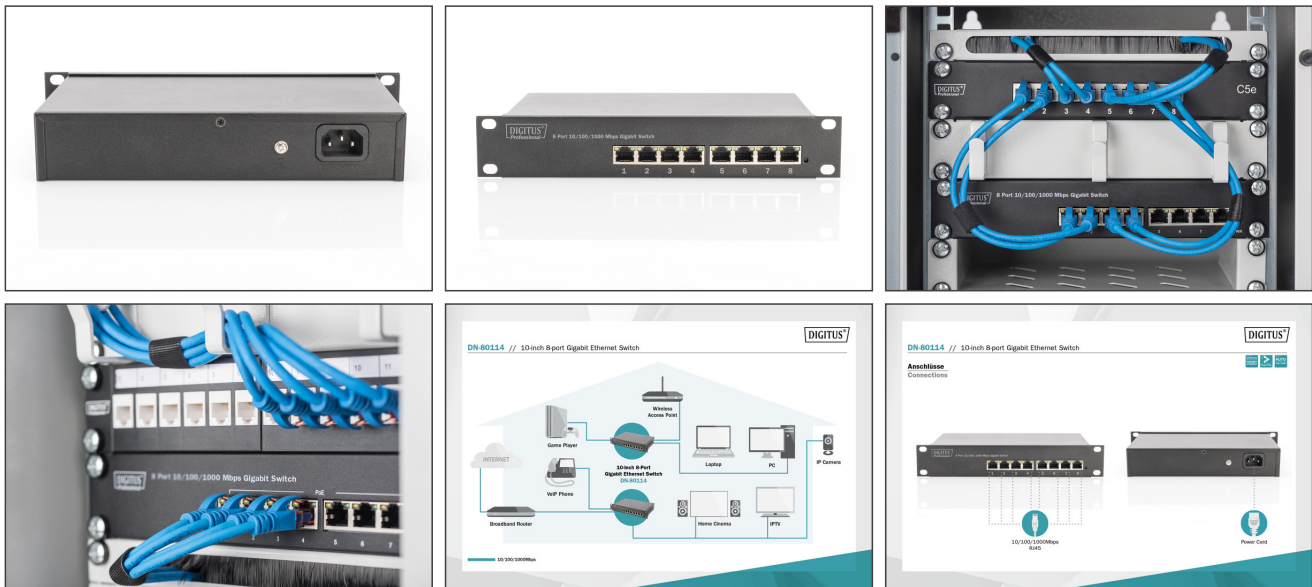
- Supports up to 8K MAC addresses
- Integrated power supply unit
- Power consumption: 5 watts
- Operating temperature: 0 °C - 40 °C
- Dimensions: (L x W x H): 250x150x42 mm
- Power supply: AC 100V~240V
- Number of ports: 8
- Ethernet speed: Gigabit
- Industrial usage: no
- Installation type: 10 inch, Desktop
- Managed: no
- Outdoorsuitable: no
- PoE (Power over Ethernet): no
- Protection against vandalism: no
- VLAN: no

Package contents

- 8 port 10 inch Gigabit switch
- Quick start guide
- Power cable
- Mounting accessories

Logistics						
	Number (pcs)	Weight (kg)	Depth (cm)	Width (cm)	Height (cm)	cm ³
Packaging Unit Carton	8	11.48	49.00	33.00	26.50	42,850.50
Packaging Unit Inside	1	1.44	32.00	24.00	6.70	5,145.60
Packaging Unit Single	1	1.44	24.00	32.00	6.70	5,145.60
Net single without Packaging	1	1.11	15.00	25.00	4.20	0.00

More images:



Safety notes

- This product is intended for indoor use only.
- Read all instructions and follow all warnings and instructions on the device.
- Do not place this appliance on an unstable surface (such as a trolley, stand, table, etc.).
- Do not use this appliance near water.
- Do not place this appliance near or above a radiator.
- The housing is equipped with openings for heat dissipation and ventilation. To prevent overheating during operation, the ventilation openings must not be blocked or covered.
- Do not place the appliance on a soft surface (e.g. bed, sofa, blanket, etc.). This will block the ventilation.
- The appliance must not be installed in a closed environment if adequate ventilation is not guaranteed.
- Do not spray any liquids onto the appliance.
- Disconnect the mains plug before cleaning. Do not use any liquid or foam cleaners.
- Clean the appliance with a damp cloth.
- Connect the device according to the power supply on the rating plate.
- To prevent damage to the appliance, it is important that all appliances are properly earthed.
- Do not place any objects on the power cable and lay it in such a way as to avoid tripping hazards.
- Use a surge protector, a regulator or an uninterruptible power supply (UPS) to protect your system from sudden, temporary and reduced power.
- Secure the system cable and mains cable properly and ensure that no objects are pressing on the cable.
- Do not insert any objects into the appliance through the openings in the housing. There is a risk of a short circuit, which can lead to fire or electric shock.
- Do not attempt to repair the appliance yourself. Always contact an authorized customer service centre.
- If any of the following conditions occur, unplug the appliance and send it to an authorized service centre for repair
- The mains cable, power supply unit or plug for the power supply is damaged or worn;
- Liquid has penetrated the appliance;
- The device has been exposed to rain or water;
- The device has been dropped or the housing has been damaged;
- The function of the device has obviously changed;
- The appliance cannot be operated as described in the operating instructions.

EU responsible person

EU based economic operator ensuring the product complies with the required regulations.

ASSMANN Electronic GmbH
 Auf dem Schüffel 3
 Lüdenscheid, Germany
<https://www.assmann.com>
info@assmann.com