

# DIGITUS CAT 6A, class EA patch panel, shielded

**DN-91624S-EA-B**  
**EAN 4016032440260**



**CAT 6A Patch Panel, shielded, 1U, 24-port, 8P8C, bl RAL 9005, 483 mm (19") / 482.6x44x109**

The DIGITUS® "DN-91624S-EA" CAT 6A patch panel is available in a 24-port version and, with its 1.5 mm galvanized cold-rolled steel, is a robust patch panel for 19" rack mounting. It complies with the 802.3at PoE+ and 802.3af PoE standard and is equipped with dust protection flaps.

**Future-oriented standards and high-end quality for your network.**

- Transmission characteristics: Category 6A, class EA
- Application areas: Up to 500 MHz, 10GBase-T
- Standards: ISO/IEC 11801 2nd Ed., EN 50173-1, EIA/TIA 568-C, 802.3af, 802.3at PoE+
- General properties:
- Suitable for 483 mm (19") rack mounting
- RJ45 sockets, 8P8C
- Cable installation via LSA strips, color-coded according to EIA/TIA 568 A & B
- Cable fixing by means of quick latches
- Central earthing connection
- 360° shield contacting
- Mechanical properties:
- Housing material: 1.5 mm galvanized, cold-rolled steel according to EN1.4301, UNS S30400, AISI 304 and LMSAD110
- RJ45 socket material: ABS UL 94V-0

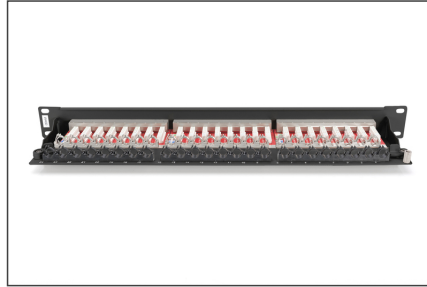
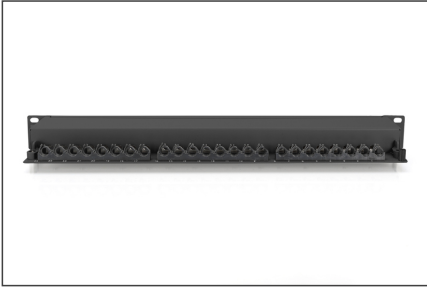
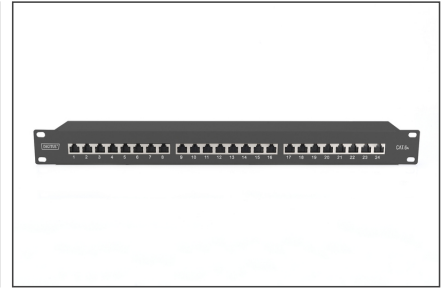
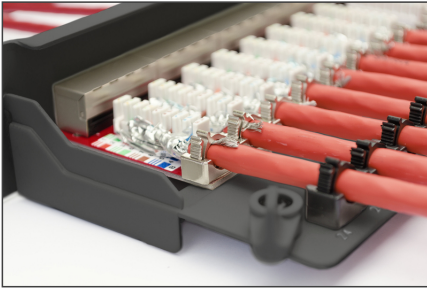
- Contact RJ45 socket: Nickel-plated phosphor bronze, 0.5 µ gold-plated contact
- RJ-45 shielding: Nickel-plated bronze
- LSA cutting clamp: Krone LSA+, UL 94V-0, galvanized phosphor bronze
- Earthing wire: Not included in the scope of delivery
- Printed circuit board: FR4, UL 94V-0
- Physical properties:
- Insertion force: 30N max. (IEC 60603-7-5)
- Tensile load: 7.7 kg between socket and plug
- Operating temperature: -20° C to +70 °C (ISO/IEC 11801, EN 50173-1, ANSI/TIA/EIA 568 C)
- Socket mating cycle: > 750 acc. to ISO/IEC 11801, IEC 60603-7-5
- Terminal: > 200 acc. to ISO/IEC 11801, IEC 60603-7-5
- Core receptacle: 22-26 AWG solid and stranded conductors"
- Insulation resistance: > 500 MOhm
- Contact resistance: < 20 milliOhms
- Dielectric strength: 1000 VDC (contact/contact), 1500 VDC (contact/ground)

**Attributes**

- Color: black, RAL 9005
- Ports: 24
- Units: 1
- Category: CAT 6A

Logistics						
	Number (pcs)	Weight (kg)	Depth (cm)	Width (cm)	Height (cm)	cm³
Packaging Unit Carton	8	13.50	52.00	29.00	26.10	39,358.80
Packaging Unit Inside	1	1.69	11.00	48.30	5.50	2,922.15
Packaging Unit Single	1	1.69	11.00	48.30	4.50	2,390.85
Net single without Packaging	1	1.44	11.00	48.30	4.50	0.00

## More images:



## Safety notes

- Protect product from moisture
- Avoid antistatic charging when installing the product
- Observe the specifications of the raw cable manufacturer during installation

## EU responsible person

EU based economic operator ensuring the product complies with the required regulations.

ASSMANN Electronic GmbH  
Auf dem Schüffel 3  
Lüdenscheid, Germany  
<https://www.assmann.com>  
[info@assmann.com](mailto:info@assmann.com)