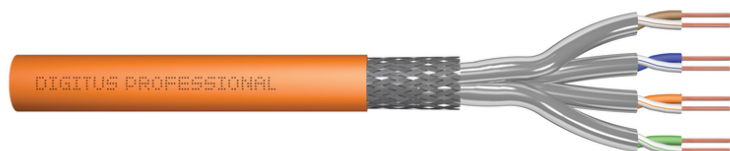


DIGITUS Cat.7 S/FTP installation cable, 1000 m, simplex, B2ca

DK-1745-VH-10
EAN 4016032435891



CAT 7 S-FTP installation cable, 1200 MHz B2ca (EN 50575), AWG 23/1, 1000 m drum,

The Digitus Cat 7 installation cable is designed for use in the structured data center and the building cabling according to ISO/IEC 11801, DIN EN 50288-4-1, DIN EN 50173, IEC 61156-7, EN 50288-9-1. The cable is perfectly suitable for the transmission of both analog and digital data and also supports POE and POE+. The shielding structure is composed of single shielded pairs with a tinned copper braid, which ensures excellent shielding and electrical values.

Future-oriented standards and high-end quality for your network.

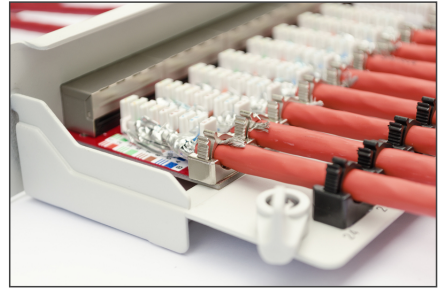
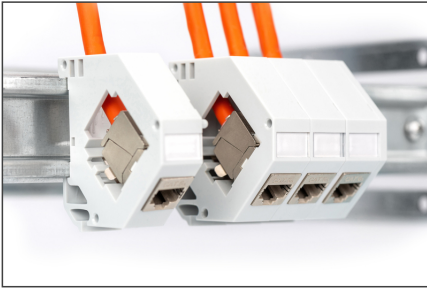
- Physical properties:
- Conductor: Bare copper wire, AWG 23/1
- System(s) of assessment and verification of constancy of performance: System 3
- Insulation: SFS-PE (foamed polyethylene jacket)
- Total number of insulated conductors: 8, twisted into 4 pairs
- Color code: Blue-white, orange-white, green-white, brown-white
- Shielding of the individual pairs: aluminum-laminated polyester film, covers 100%
- Overall shielding: copper braiding
- Outer sheath: Eca to B2ca in accordance with EN 50575; LSZH
- Outer sheath thickness (nominal): 0.50 mm (Eca); 0.52 mm (Dca); 0.60 mm (Cca); 0.60 (B2ca)
- Color: Orange (RAL 2008)
- Mechanical properties:
- Strain relief: 150N max.
- Dynamic bending radius: 8x AD mm min.
- Static bending radius: 4x AD mm min.

- Transport and storage temperature range: -20 °C to +60 °C
- Operating temperature range: -20 °C to +50 °C
- Installation temperature range: 0 °C to +50 °C
- Outer diameter simplex (nominal): 7.0 mm (Eca); 7.2 mm (Dca); 7.5 mm (Cca); 7.5 mm (B2ca)
- Weight (kg/km): 49.5 kg (Eca); 51 kg (Dca), 53 kg (Cca); 53 kg (B2ca)
- Electrical properties:
- Impedance: 100±15 Ohm @ 4 - 1000 MHz; 100±25 OHM @ 100-600 MHz
- Capacitance: 45 pF/m nominal @ 1 KHz
- Capacitance unbalance (pair-earth): 1.6 pF/m max. @ 1 KHz
- Insulation resistance: 5 GOhm x km min.
- DC resistance: 95 Ohm/km max. (2% max. unbalanced resistance)
- Loop resistance: 190 Ohm/km max. (2% max. unbalanced resistance)
- Operating voltage: 72 Vdc max.
- Outer sheath: Dca-s2 d1 a1 according to EN 50575; LSZH
- Coupling attenuation: CA-Type 1b
- Phase delay: 450 nS/100 m max.
- Time delay: 10 nS/100 m max.
- Separation class: "d" according to EN 50174-2
- NVP: 79%
- Assortment: Twisted Pair Installation Cables
- Category: CAT 7
- Shielding: S-FTP, pairs in metal foil and braid shielding
- CPR: B2ca
- Length: 1000 m
- Color: orange
- Jacket: LSOH
- Structure: 4 x 2 AWG 23/1, solid twisted pair

Logistics

	Number (pcs)	Weight (kg)	Depth (cm)	Width (cm)	Height (cm)	cm³
Packaging Unit Carton	1	47.00	55.00	55.00	35.00	105,875.00
Packaging Unit Inside	1	47.00	55.00	55.00	35.00	105,875.00
Packaging Unit Single	1	47.00	55.00	55.00	35.00	105,875.00
Net single without Packaging	1	0.00	55.00	55.00	35.00	0.00

More images:



CAT 7 S/FTP Installation Cable, 1,000 m, Simplex, B2_{ca}

- AWG 23/1
- 1200 MHz
- 10 Gbit Ethernet
- CAT 7 1,000 m
- 20/7.50°
- LSZH
- B2_{ca} CPE class

DK.1745-VH-10 // CAT 7 S/FTP Installation Cable, 1000m, Simplex, B2_{ca}

Anwendungsbeispiel
Example of use

DK.1745-VH-10 // CAT 7 S/FTP Installation Cable, 1000m, Simplex, B2_{ca}

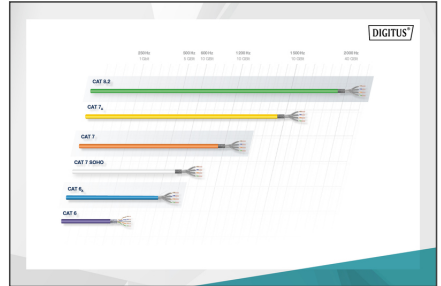
Kabelquerschnitt
Cable cross section

Produktdatenblatt Produkt Information

Produktbeschreibung	Technische Spezifikationen / Physical Properties
<p>Produktbeschreibung</p> <p>Produktname: CAT 7 S/FTP Installation Cable, 1000m, Simplex, B2_{ca}</p> <p>Artikelnummer: 1745-1000-01</p> <p>Hersteller: DIGITUS</p> <p>Material: PVC, LSZH</p> <p>Farbe: Orange</p> <p>Abmessungen: 1000m x 12mm x 5mm</p> <p>Nettogewicht: 1.2kg</p> <p>Bruttogewicht: 1.5kg</p> <p>Verpackung: 1000m / Spule</p> <p>Umweltbedingungen: -20°C bis +75°C</p> <p>CE-Zertifizierung: CE</p>	<p>Technische Spezifikationen / Physical Properties</p> <p>Standard: IEC 61883-1, IEC 61883-2</p> <p>Leistungsfähigkeit: 10 Gbit Ethernet</p> <p>Bandbreite: 1200 MHz</p> <p>AWG: 23/1</p> <p>LSZH: Low Smoke Zero Halogen</p> <p>Temperaturbereich: -20°C bis +75°C</p> <p>Flammverhalten: IEC 60332-1, IEC 60332-2</p> <p>Abriebprüfung: IEC 60084</p> <p>Stoßprüfung: IEC 60068-2-27</p> <p>Vibrationprüfung: IEC 60068-2-24</p> <p>EMV: IEC 61000-4-2, IEC 61000-4-3, IEC 61000-4-4, IEC 61000-4-5, IEC 61000-4-6, IEC 61000-4-8, IEC 61000-4-11</p>

Leistungsfähigkeit / Transmission Properties

PAIRS	100	100	100	100	100	100	100	100
ATTEN [dB]	1	2	3	4	5	6	7	8
100	1.0	1.5	2.0	2.5	3.0	3.5	4.0	4.5
200	1.5	2.0	2.5	3.0	3.5	4.0	4.5	5.0
300	2.0	2.5	3.0	3.5	4.0	4.5	5.0	5.5
400	2.5	3.0	3.5	4.0	4.5	5.0	5.5	6.0
500	3.0	3.5	4.0	4.5	5.0	5.5	6.0	6.5
600	3.5	4.0	4.5	5.0	5.5	6.0	6.5	7.0
700	4.0	4.5	5.0	5.5	6.0	6.5	7.0	7.5
800	4.5	5.0	5.5	6.0	6.5	7.0	7.5	8.0
900	5.0	5.5	6.0	6.5	7.0	7.5	8.0	8.5



CPE Konfiguration

B2_{ca} (S) | **C_{ca}** (S) | **D_{ca}** (S) | **E_{ca}** (S)

1+ | **3**

C_{ca} s1a d1 a1

Technische Spezifikationen

- Spannungsbereich: 0V bis 100V
- Temperaturbereich: -20°C bis +75°C
- Feuchtigkeit: 95% bis 98%
- Vibration: 10g bis 100g
- Stoß: 10g bis 100g
- Abrieb: 10g bis 100g
- Flammverhalten: IEC 60332-1, IEC 60332-2
- EMV: IEC 61000-4-2, IEC 61000-4-3, IEC 61000-4-4, IEC 61000-4-5, IEC 61000-4-6, IEC 61000-4-8, IEC 61000-4-11

