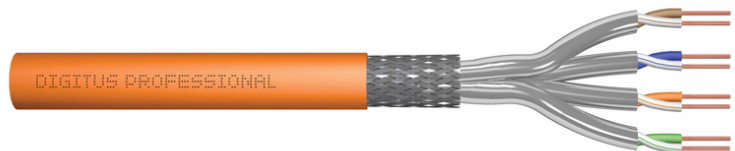


DIGITUS Cat.7 S/FTP installation cable, 500 m, simplex, B2ca

DK-1745-VH-5
EAN 4016032435884



CAT 7 S-FTP installation cable, 1200 MHz B2ca (EN 50575), AWG 23/1, 500 m drum,

The Digitus Cat 7 installation cable is designed for use in the structured data center and the building cabling according to ISO/IEC 11801, DIN EN 50288-4-1, DIN EN 50173, IEC 61156-7, EN 50288-9-1. The cable is perfectly suitable for the transmission of both analog and digital data and also supports POE and POE+. The shielding structure is composed of single shielded pairs with a tinned copper braid, which ensures excellent shielding and electrical values.

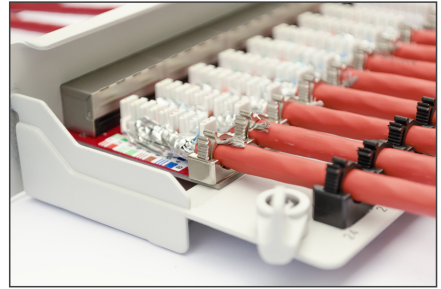
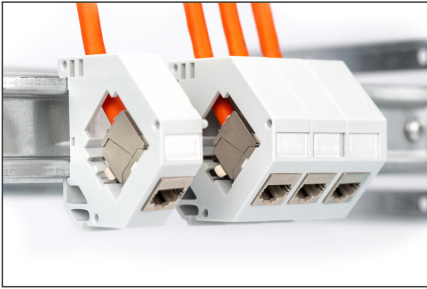
Future-oriented standards and high-end quality for your network.

- Physical properties:
- Conductor: Bare copper wire, AWG 23/1
- System(s) of assessment and verification of constancy of performance: System 3
- Insulation: SFS-PE (foamed polyethylene jacket)
- Total number of insulated conductors: 8, twisted into 4 pairs
- Color code: Blue-white, orange-white, green-white, brown-white
- Shielding of the individual pairs: aluminum-laminated polyester film, covers 100%
- Overall shielding: copper braiding
- Outer sheath: B2ca according to EN 50575; LSZH
- Outer sheath thickness (nominal): 0.50 mm (Eca); 0.52 mm (Dca); 0.60 mm (Cca); 0.60 (B2ca)
- Color: Orange (RAL 2008)
- Mechanical properties:
- Strain relief: 135N max.
- Dynamic bending radius: 8x AD mm min.
- Static bending radius: 4x AD mm min.

- Transport and storage temperature range: -20 °C to +60 °C
- Operating temperature range: -20 °C to +50 °C
- Installation temperature range: 0 °C to +50 °C
- Electrical properties:
- Impedance: 100±15 Ohm @ 4 - 1000 MHz; 100±25 OHM @ 100-600 MHz
- Capacitance: 45pF/m nom. at 1KHz
- Capacitance: 40 pF/m nominal @ 1 KHz
- Insulation resistance: 5 GOhm x km min.
- DC resistance: 95 Ohm/km max. (2% max. unbalanced resistance)
- Loop resistance: 190 Ohm/km max. (2% max. unbalanced resistance)
- Operating voltage: 72 Vdc max.
- Coupling attenuation: CA-Type 1b
- Phase delay: 450 nS/100 m max.
- Time delay: 10 nS/100 m max.
- Separation class: "d" according to EN 50174-2
- NVP: 79%
- Flame spread: EN EN 60332-1-2 (LSOH-PVC)
- Halogen-free, corrosivity: EN 60754-1/2 (LSOH)
- Smoke density EN 61034-2
- Assortment: Twisted Pair Installation Cables
- Category: CAT 7
- Shielding: S-FTP, pairs in metal foil and braid shielding
- CPR: B2ca
- Length: 500 m
- Color: orange
- Jacket: LSOH
- Structure: 4 x 2 AWG 23/1, solid twisted pair

| Logistics | | | | | | |
|------------------------------|--------------|-------------|------------|------------|-------------|-----------|
| | Number (pcs) | Weight (kg) | Depth (cm) | Width (cm) | Height (cm) | cm³ |
| Packaging Unit Carton | 1 | 28.01 | 38.00 | 38.00 | 38.50 | 55,594.00 |
| Packaging Unit Inside | 1 | 28.01 | 38.00 | 38.00 | 38.50 | 55,594.00 |
| Packaging Unit Single | 1 | 28.01 | 38.00 | 38.00 | 38.50 | 55,594.00 |
| Net single without Packaging | 1 | 0.00 | 38.00 | 38.00 | 38.50 | 0.00 |

More images:



CAT 7 S/FTP Installation Cable, 500m, Simplex, B2_{ca}

AWG 23/1 | 1200 MHz | 10 Gbit Ethernet | CAT 7 1000 MHz | 20/7-50° | LSZH | B2_{ca} CPRI class

DK-1745-VH-S // CAT 7 S/FTP Installation Cable, 500m, Simplex, B2_{ca}

Anwendungsbeispiel
Example of use

DK-1745-VH-S // CAT 7 S/FTP Installation Cable, 500m, Simplex, B2_{ca}

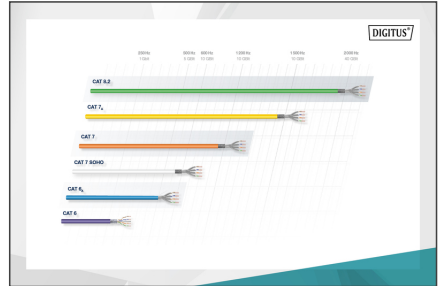
Kabelquerschnitt
Cable cross section

Produktinformationen Produkt Information

| | | | |
|---------------------|--|--|---|
| Bestandteile | 100m CAT 7 S/FTP Installation Cable, 500m, Simplex, B2 _{ca} | Physikalische Spezifikationen Physical Properties | <p>Standard: IEC 60332-1-2, IEC 60332-3-21, IEC 60332-3-22, IEC 60332-3-23, IEC 60332-3-24, IEC 60332-3-25, IEC 60332-3-26, IEC 60332-3-27, IEC 60332-3-28, IEC 60332-3-29, IEC 60332-3-30, IEC 60332-3-31, IEC 60332-3-32, IEC 60332-3-33, IEC 60332-3-34, IEC 60332-3-35, IEC 60332-3-36, IEC 60332-3-37, IEC 60332-3-38, IEC 60332-3-39, IEC 60332-3-40, IEC 60332-3-41, IEC 60332-3-42, IEC 60332-3-43, IEC 60332-3-44, IEC 60332-3-45, IEC 60332-3-46, IEC 60332-3-47, IEC 60332-3-48, IEC 60332-3-49, IEC 60332-3-50, IEC 60332-3-51, IEC 60332-3-52, IEC 60332-3-53, IEC 60332-3-54, IEC 60332-3-55, IEC 60332-3-56, IEC 60332-3-57, IEC 60332-3-58, IEC 60332-3-59, IEC 60332-3-60, IEC 60332-3-61, IEC 60332-3-62, IEC 60332-3-63, IEC 60332-3-64, IEC 60332-3-65, IEC 60332-3-66, IEC 60332-3-67, IEC 60332-3-68, IEC 60332-3-69, IEC 60332-3-70, IEC 60332-3-71, IEC 60332-3-72, IEC 60332-3-73, IEC 60332-3-74, IEC 60332-3-75, IEC 60332-3-76, IEC 60332-3-77, IEC 60332-3-78, IEC 60332-3-79, IEC 60332-3-80, IEC 60332-3-81, IEC 60332-3-82, IEC 60332-3-83, IEC 60332-3-84, IEC 60332-3-85, IEC 60332-3-86, IEC 60332-3-87, IEC 60332-3-88, IEC 60332-3-89, IEC 60332-3-90, IEC 60332-3-91, IEC 60332-3-92, IEC 60332-3-93, IEC 60332-3-94, IEC 60332-3-95, IEC 60332-3-96, IEC 60332-3-97, IEC 60332-3-98, IEC 60332-3-99, IEC 60332-3-100</p> |
|---------------------|--|--|---|

Leitungsparameter Transmission Properties

| PAIR | ATT | NEXT | PS NEXT | ACR | PS ACR | ISL | EXTEN | PS EXTEN |
|------|-----|------|---------|-----|--------|-----|-------|----------|
| 1 | 2 | 3 | 4 | 5 | 6 | 7 | 8 | 9 |
| 10 | 10 | 11 | 12 | 13 | 14 | 15 | 16 | 17 |
| 20 | 20 | 21 | 22 | 23 | 24 | 25 | 26 | 27 |
| 30 | 30 | 31 | 32 | 33 | 34 | 35 | 36 | 37 |
| 40 | 40 | 41 | 42 | 43 | 44 | 45 | 46 | 47 |
| 50 | 50 | 51 | 52 | 53 | 54 | 55 | 56 | 57 |
| 60 | 60 | 61 | 62 | 63 | 64 | 65 | 66 | 67 |
| 70 | 70 | 71 | 72 | 73 | 74 | 75 | 76 | 77 |
| 80 | 80 | 81 | 82 | 83 | 84 | 85 | 86 | 87 |
| 90 | 90 | 91 | 92 | 93 | 94 | 95 | 96 | 97 |
| 100 | 100 | 101 | 102 | 103 | 104 | 105 | 106 | 107 |



CEP Konformität

B2_{ca} | **C_{ca}** | **D_{ca}** | **E_{ca}**

st1 | **d1** | **a1**

1+ | **3**

s | **d** | **a**

