

# DIGITUS Universal Wall Mount for monitors up to 81 cm (32")

DA-90303-1  
EAN 4016032383123



**TV Wall Mount, 32" 18 kg max load, max VESA 100x100**

Universal monitor mount for mounting your LED or LCD monitor to the wall. Very low-profile (only 18 mm) for elegant flat screen mounting. The monitor stand allows you to install LED and LCD monitors of all brands. Simply note the VESA size and the weight of your monitor in order to select an appropriate mount.

**Universally suitable for all LED and LCD monitors up to 32" with a mounting option in accordance with the VESA standard**

- Suitable for standard VESA mounting patterns of 75 x 75 and 100 x 100 mm

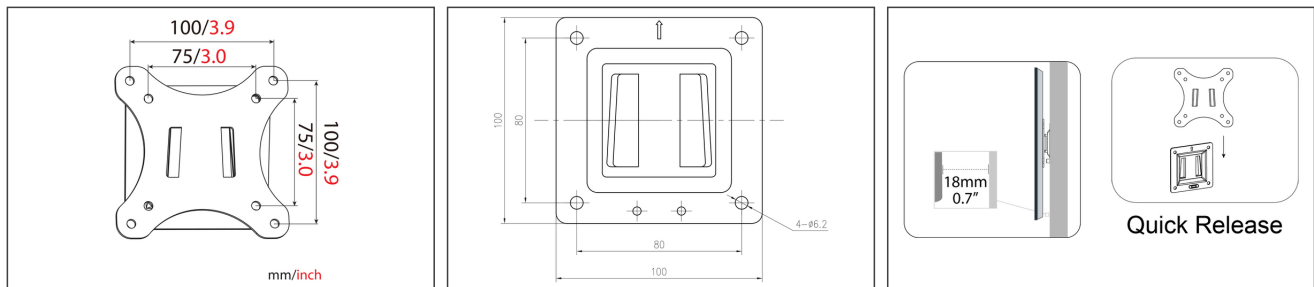
- For monitors up to 81 cm (32") and with a maximum weight of 18 kg
- Minimal mounting profile from wall (18 mm)
- Integrated spirit level for easy mounting
- Weight: 0.3 kg
- Dimensions: 120 x 120 x 18 mm

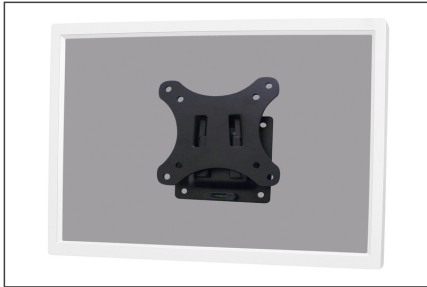
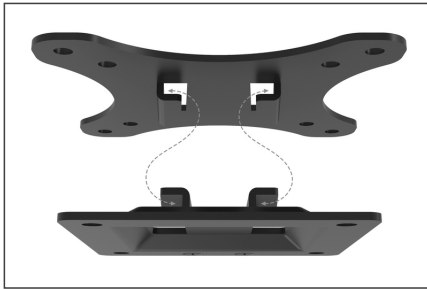
**Package contents**

- Monitor wall mount
- Manual
- Screws for mounting the monitor

Logistics						
	Number (pcs)	Weight (kg)	Depth (cm)	Width (cm)	Height (cm)	cm <sup>3</sup>
Packaging Unit Carton	36	15.50	27.50	42.00	21.00	24,255.00
Packaging Unit Inside	1	0.43	15.00	13.00	2.50	487.50
Packaging Unit Single	1	0.43	15.00	13.00	2.50	487.50
Net single without Packaging	1	0.33	12.00	12.00	1.50	0.00

**More images:**





#### Safety notes

- Please read the entire manual before starting assembly and installation. Please contact your local dealer if you have any questions about the instructions or warnings.
- CAUTION: Use with products that exceed the permitted weight may result in damage or possible injury.
- Brackets should be fitted in accordance with the installation instructions. Incorrect installation can result in damage or injury.
- Use safety equipment and suitable tools. The product should only be installed by specialists.
- This product can be installed on timber-framed, solid concrete or stone walls.
- The load-bearing surfaces should be able to safely withstand the entire weight of appliances and all additional components.
- Only use the installation screws supplied and DO NOT TIGHTEN the screws TOO TIGHT.
- This product contains small parts that can cause a choking hazard if swallowed. Keep these parts away from children.
- Only use this product indoors. Using the product outdoors can lead to injuries and damage.
- IMPORTANT: Before installation, please check all components received against the components list. If parts are damaged or missing, ask your local dealer for replacement parts.
- MAINTENANCE: Check the bracket regularly for safety and stability (preferably every three months).

#### EU responsible person

EU based economic operator ensuring the product complies with the required regulations.

ASSMANN Electronic GmbH  
 Auf dem Schüffel 3  
 Lüdenscheid, Germany  
<https://www.assmann.com>  
[info@assmann.com](mailto:info@assmann.com)