

DIGITUS Suporte de monitor universal duplo com fixação por aperto

DA-90349
EAN 4016032382676



Dual Monitor Desk Clamp Mount, 15-27", black max. load 2x8Kg, VESA max100x100

Suporte de monitor universal para um posicionamento flexível dos seus monitores no local de trabalho com possibilidade de inclinação e orientação simples horizontal e vertical. Ajuste simplesmente a altura de visão às suas necessidades. O suporte para monitores permite a montagem de monitores LED, LCD de todas as marcas. Tenha apenas atenção à dimensão VESA, bem como ao peso dos seus monitores, de modo a escolher um suporte adequado.

Suporte universal duplo para monitores com fixação por aperto até 69 cm (27")

- Adequado para distâncias de acordo com a norma VESA 75 x 75 e 100 x 100 mm
- Para tampos de mesa até 7,5 m
- Para monitores de até 69cm (27") e um peso máximo de 16kg

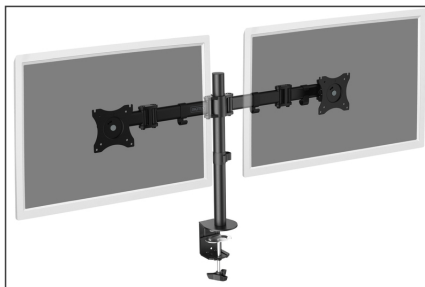
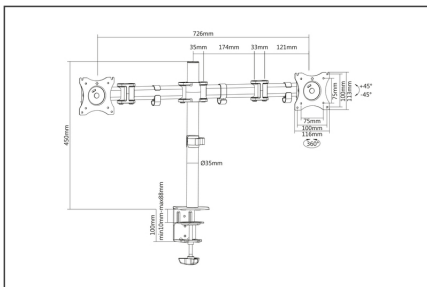
- Ajuste de altura individual de 15mm para um alinhamento perfeito dos seus monitores
- Ângulo de inclinação de ajuste livre vertical até 45 graus
- Rotação até 360°
- Peso: 5kg
- Dimensões: 726 x 450 x 35mm
- Monitor weight (max.): 8 kg
- Mounting method: Clamp-mount
- Number of monitors: 2
- Size of monitors: up to 27"
- VESA mount: 75x75 mm, 100x100 mm

Package contents

- Suporte de monitor
- Parafusos para a montagem do monitor
- Manual de instruções

Logistics						
	Number (pcs)	Weight (kg)	Depth (cm)	Width (cm)	Height (cm)	cm³
Packaging Unit Carton	3	16.30	48.80	46.50	15.00	34,038.00
Packaging Unit Inside	1	5.43	12.50	47.80	15.00	8,962.50
Packaging Unit Single	1	5.43	12.50	47.80	15.00	8,962.50
Net single without Packaging	1	4.44	11.60	72.60	55.00	0.00

More images:



Safety notes

- Please read the entire manual before starting assembly and installation. Please contact your local dealer if you have any questions about the instructions or warnings.
- CAUTION: Use with products that exceed the permitted weight may result in damage or possible injury.
- Brackets should be fitted in accordance with the installation instructions. Incorrect installation can result in damage or injury.
- Use safety equipment and suitable tools. The product should only be installed by specialists.
- This product can be installed on timber-framed, solid concrete or stone walls.
- The load-bearing surfaces should be able to safely withstand the entire weight of appliances and all additional components.
- Only use the installation screws supplied and DO NOT TIGHTEN the screws TOO TIGHT.
- This product contains small parts that can cause a choking hazard if swallowed. Keep these parts away from children.
- Only use this product indoors. Using the product outdoors can lead to injuries and damage.
- IMPORTANT: Before installation, please compare all components received with the components list. If parts are damaged or missing, ask your local dealer for replacement parts.
- MAINTENANCE: Check the bracket regularly for safety and stability (preferably every three months).

EU responsible person

EU based economic operator ensuring the product complies with the required regulations.

ASSMANN Electronic GmbH
Auf dem Schüffel 3
Lüdenscheid, Germany
<https://www.assmann.com>
info@assmann.com