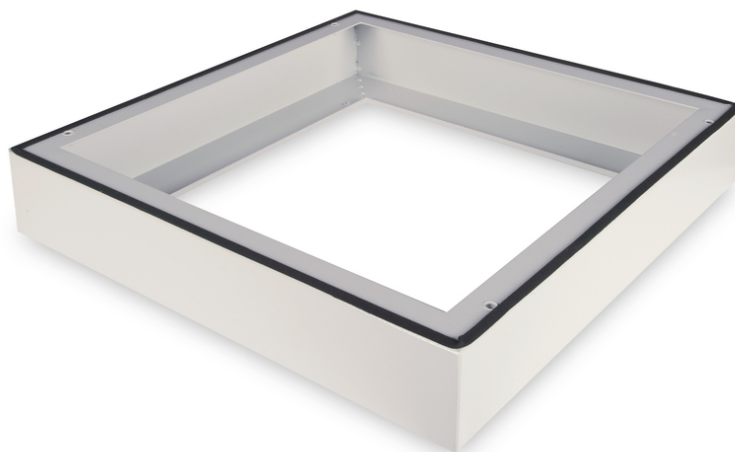


# DIGITUS Base para caixa de parede IP55 - 600x600 mm (L x P)

DN-19 PLINTH-6-I-OD  
EAN 4016032370512



**Plinth for IP55 outdoor wall mounting cabinet 100x600x600 mm, color grey (RAL 7035)**

A base para uma caixa de parede de 483 mm (19") IP55 aumenta a altura em 100 mm e providencia área para uma cablagem organizada. A montagem realiza-se em etapas simples com os parafusos juntamente fornecidos. A base está igualmente equipada com um vedante para manter o nível de proteção IP55. Permite a instalação numa fundação pavimentar forte.

- Montagem simples sob armários

- Chapa de aço resistente de 1,5 - 2,0 mm
- Color: light grey, RAL 7035
- Depth: 600 mm
- Width: 600 mm
- For cabinet series: Wall Mounting
- Inch form factor (IEC 60297): 482.6 mm (19")

**Package contents**

- Fastening material

Logistics						
	Number (pcs)	Weight (kg)	Depth (cm)	Width (cm)	Height (cm)	cm³
Packaging Unit Carton	1	6.30	62.00	62.00	12.00	46,128.00
Packaging Unit Inside	1	6.30	62.00	62.00	12.00	46,128.00
Packaging Unit Single	1	6.30	62.00	62.00	12.00	46,128.00
Net single without Packaging	1	5.20	60.00	60.00	10.00	0.00

**Safety notes**

- When installing and using the accessory product for network cabinets, observe the respective safety instructions of the manufacturer or the cabinet system in which you want to use the accessory.

**EU responsible person**

EU based economic operator ensuring the product complies with the required regulations.

ASSMANN Electronic GmbH  
Auf dem Schüffel 3  
Lüdenscheid, Germany  
<https://www.assmann.com>  
[info@assmann.com](mailto:info@assmann.com)