

DIGITUS Conversor HDMI para VGA

DA-70461
EAN 4016032368007



HDMI to VGA converter adapter Typ A - VGA (D-Sub) connector, 3,5mm audio jack

O DIGITUS DA-70461 converte sinais digitais HDMI em sinais analógicos VGA. Assim, é possível ligar equipamentos de reprodução modernos, como computadores portáteis, leitores Blu-Ray, leitores de DVD, consolas de jogos, etc. a ecrãs VGA ou projetores VGA mais antigos. O conversor está adicionalmente equipado com um conector fêmea jack áudio de 3,5 mm. Um sinal áudio eventualmente existente é assim convertido paralelamente. Tal permite uma reprodução áudio adicional através da ligação aos seus altifalantes ou ao seu sistema surround.

Converte um sinal HDMI num sinal VGA

- Entrada: HDMI tipo A + 3,5 mm áudio
- Saída: VGA
- Conversor de sinais de vídeo e áudio de HDMI para VGA

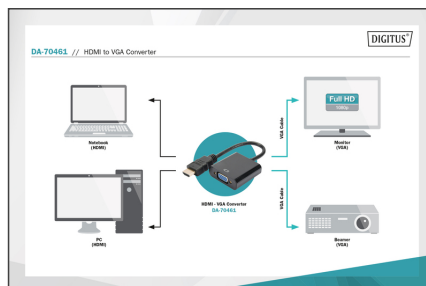
- Tire proveito dos equipamentos modernos utilizando ecrãs VGA analógicos mais antigos
- A instalação de software ou driver não é necessária
- Resolução VGA: Resolução de 10-Bit até uma taxa de 165Mhz pixels (1080P e UXGA)
- Cor: Preto
- Peso: 30 g
- Dimensões: 180 x 45 x 15 mm (C x L x A)
- Dimensões: 180 x 45 x 15 mm (C x L x A)
- HDTV Resolution max.: 1920 x 1080 Pixel, 60Hz
- HDTV Standard: Full HD
- Audio: no
- Signal input: HDMI
- Signal output: VGA

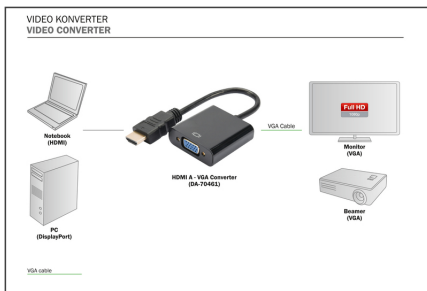
Package contents

- Conversor HDMI para VGA

Logistics						
	Number (pcs)	Weight (kg)	Depth (cm)	Width (cm)	Height (cm)	cm ³
Packaging Unit Carton	80	5.50	44.00	33.00	21.00	30,492.00
Packaging Unit Inside	1	0.07	0.00	0.00	0.00	0.00
Packaging Unit Single	1	0.07	14.00	9.00	2.00	252.00
Net single without Packaging	1	0.03	18.00	4.50	1.50	0.00

More images:





Safety notes

- If the device is powered by a plug-in power supply, ensure that the power adapter is connected correctly and meets the specified requirements (e.g. voltage and current).
- Only use certified CAT5e or CAT6 cables to ensure stable signal transmission.
- For particularly long cable runs or in environments prone to interference, it is recommended to use shielded network cables.
- Make sure that all connections are tight and secure to avoid loose contacts that could affect the signal quality. Make sure that the HDMI and Ethernet connections are connected correctly.
- Make sure that the CAT cable is not laid near high-voltage power lines or other strong sources of electromagnetic interference to avoid signal interference.
- Only operate the device within the specified temperature range.
- Do not use the device outdoors or in damp or wet environments
- Check all connections and cables regularly for wear or damage. Cables and connections can wear out, especially with frequent use or long installations, which can lead to poor signal quality or system failure.

EU responsible person

EU based economic operator ensuring the product complies with the required regulations.

ASSMANN Electronic GmbH
 Auf dem Schüffel 3
 Lüdenscheid, Germany
<https://www.assmann.com>
info@assmann.com