

DIGITUS L-Support Sliding Rails for 483 mm (19") Server Cabinets

DN-19 GS-SRV
EAN 4016032366461



Slide rails, L shape, for 800-1000 mm depth racks adjustable 500-750 mm depth, set with 2 pieces

The L-Support Slide Rails help you to support the installation of heavy duty components in DIGITUS® 483 mm (19") network- or server cabinets. They are getting fixed on the four 483 mm (19") profile rails. With galvanized steel sheet and a load capacity of up to 100 kg, they offer a perfect solution.

- for fixed installation on the four 483 mm (19") profile rails
- galvanized steel sheet with a strength of 2.00 mm
- Loading capacity: 100 kg

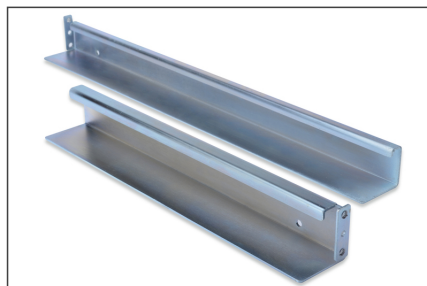
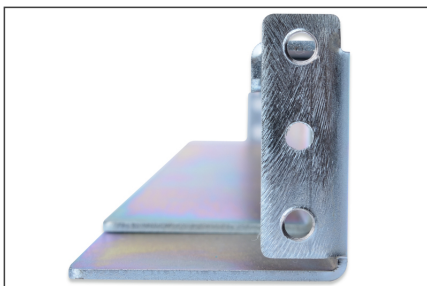
- 1 piece consists of two parts (internal and external profiling system)
- 1 set= 2 pieces
- Variable in depth: 500 mm to 750 mm
- incl. fixing material

Package contents

- L support rail set (two rails - for left and right side of 19" profile rails)
- Fixing material

Logistics						
	Number (pcs)	Weight (kg)	Depth (cm)	Width (cm)	Height (cm)	cm³
Packaging Unit Carton	4	11.44	56.00	20.00	16.50	18,480.00
Packaging Unit Inside	1	2.86	53.50	6.00	8.00	2,568.00
Packaging Unit Single	1	2.86	53.50	6.00	8.00	2,568.00
Net single without Packaging	1	2.00	60.00	5.00	4.40	0.00

More images:



Safety notes

- When installing and using the accessory product for network cabinets, observe the respective safety instructions of the manufacturer or the cabinet system in which you want to use the accessory.

EU responsible person

EU based economic operator ensuring the product complies with the required regulations.

ASSMANN Electronic GmbH
Auf dem Schüffel 3
Lüdenscheid, Germany
<https://www.assmann.com>
info@assmann.com