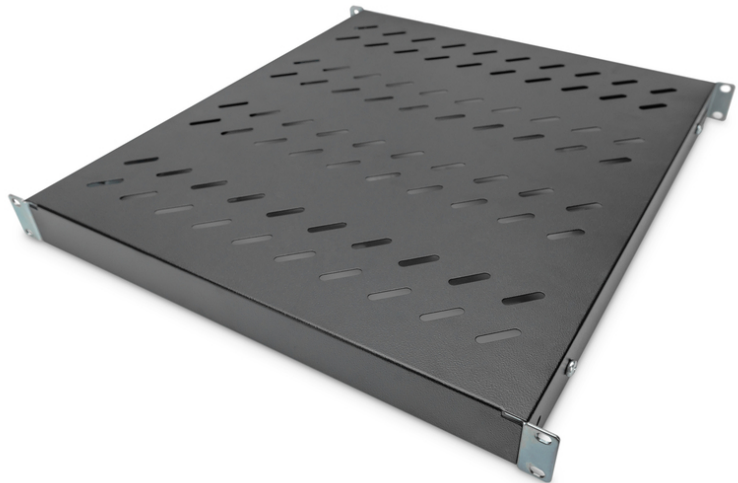


DIGITUS Shelf with Variable Rails for Fixed Mounting in 483 mm (19") Cabinets

DN-97647
EAN 4016032364993



1U fixed shelf for 800 mm depth racks 44x482x500 mm, adjust. 500-700 mm depth, black

Полки необходимо просто установить на четырех 19-дюймовых угловых профилях Ваших 19-дюймовых шкафов. Благодаря стабильной перфорированной жести с высокой грузоподъемностью обеспечивается оптимальная несущая поверхность для Ваших компонентов. Полки доступны в сером (RAL 7035) и черном (RAL 9005) цветовых исполнениях.

- Крепёжный материал входит в комплект поставки

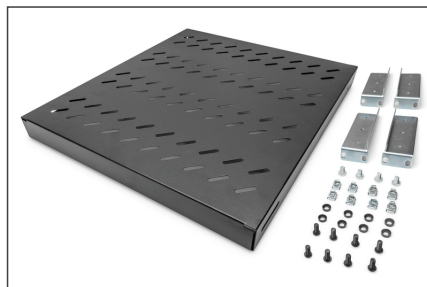
- Color: black, RAL 9005
- Load capacity: 50 kg
- Mounting type: Adjustable mounting rails
- Units: 1
- Weight: 3.2 kg
- Inch form factor (IEC 60297): 482.6 mm (19")
- Suitable cabinet depth: 800 mm

Package contents

- Installation set (screws, cage nuts, washers)

Logistics						
	Number (pcs)	Weight (kg)	Depth (cm)	Width (cm)	Height (cm)	cm³
Packaging Unit Carton	9	28.80	59.50	50.00	46.60	138,635.00
Packaging Unit Inside	1	3.20	52.50	50.00	5.50	14,437.50
Packaging Unit Single	1	3.20	45.00	53.00	5.00	11,925.00
Net single without Packaging	1	3.20	50.80	48.30	4.30	0.00

More images:



**Safety notes**

- When installing and using the accessory product for network cabinets, observe the respective safety instructions of the manufacturer or the cabinet system in which you want to use the accessory.

EU responsible person

EU based economic operator ensuring the product complies with the required regulations.

ASSMANN Electronic GmbH
Auf dem Schüffel 3
Lüdenscheid, Germany
<https://www.assmann.com>
info@assmann.com