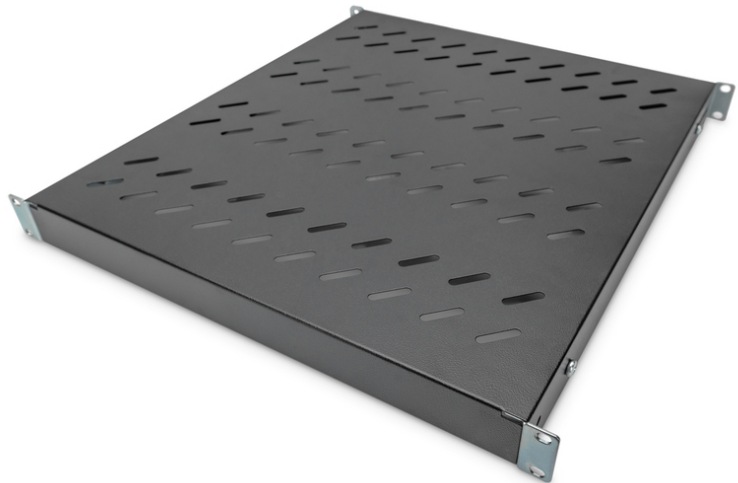


# DIGITUS Shelf with Variable Rails for Fixed Mounting in 483 mm (19") Cabinets

DN-97647  
EAN 4016032364993



**1U fixed shelf for 800 mm depth racks 44x482x500 mm, adjust. 500-700 mm depth, black**

A montagem das prateleiras com os perfis angulares de 19" nos seus armários de 19" é simples. A placa perfurada estável com elevada capacidade de carga é a superfície de sustentação ideal para os seus elementos. As prateleiras podem ser adquiridas nas cores cinzento claro (RAL 7035) e preto (RAL 9005).

- inc. material de fixação, M6
- Color: black, RAL 9005

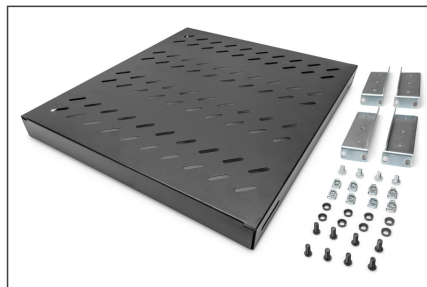
- Load capacity: 50 kg
- Mounting type: Adjustable mounting rails
- Units: 1
- Weight: 3.2 kg
- Inch form factor (IEC 60297): 482.6 mm (19")
- Suitable cabinet depth: 800 mm

**Package contents**

- Installation set (screws, cage nuts, washers)

Logistics						
	Number (pcs)	Weight (kg)	Depth (cm)	Width (cm)	Height (cm)	cm³
Packaging Unit Carton	9	28.80	59.50	50.00	46.60	138,635.00
Packaging Unit Inside	1	3.20	52.50	50.00	5.50	14,437.50
Packaging Unit Single	1	3.20	45.00	53.00	5.00	11,925.00
Net single without Packaging	1	3.20	50.80	48.30	4.30	0.00

**More images:**



**Safety notes**

- When installing and using the accessory product for network cabinets, observe the respective safety instructions of the manufacturer or the cabinet system in which you want to use the accessory.

**EU responsible person**

EU based economic operator ensuring the product complies with the required regulations.

ASSMANN Electronic GmbH  
Auf dem Schüffel 3  
Lüdenscheid, Germany  
<https://www.assmann.com>  
[info@assmann.com](mailto:info@assmann.com)