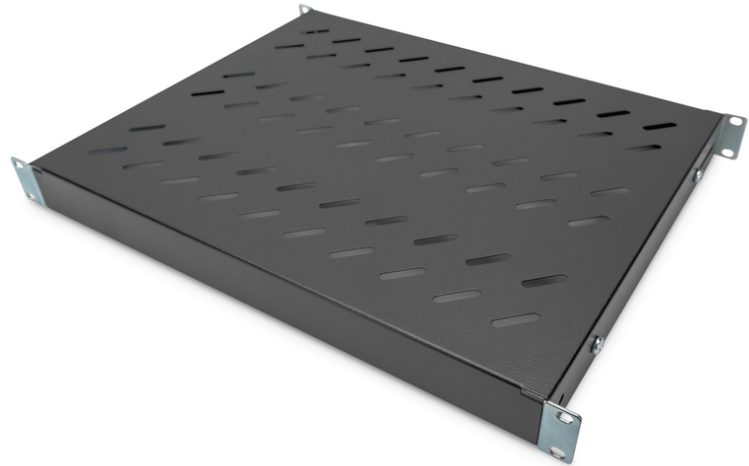


# DIGITUS Shelf with Variable Rails for Fixed Mounting in 483 mm (19") Cabinets

DN-97645  
EAN 4016032364979



**1U fixed shelf for 600 mm depth racks 44x482x350 mm, adjust. 350-550 mm depth, black**

A montagem das prateleiras com os perfis angulares de 19" nos seus armários de 19" é simples. A placa perfurada estável com elevada capacidade de carga é a superfície de sustentação ideal para os seus elementos. As prateleiras podem ser adquiridas nas cores cinzento claro (RAL 7035) e preto (RAL 9005).

- inc. material de fixação, M6

**Attributes**

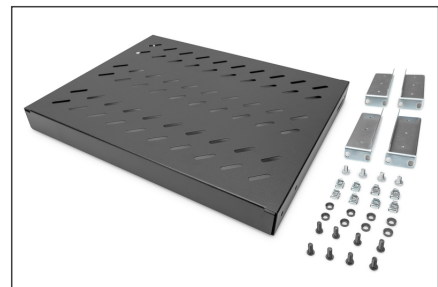
- Color: black, RAL 9005
- Load capacity: 50 kg
- Mounting type: Adjustable mounting rails
- Units: 1
- Weight: 2.38 kg
- Inch form factor (IEC 60297): 482.6 mm (19")
- Suitable cabinet depth: 600 mm

**Package contents**

- Installation set (screws, cage nuts, washers)

Logistics						
	Number (pcs)	Weight (kg)	Depth (cm)	Width (cm)	Height (cm)	cm <sup>3</sup>
Packaging Unit Carton	10	23.94	47.00	43.00	40.00	80,840.00
Packaging Unit Inside	1	2.39	45.20	37.70	5.00	8,520.20
Packaging Unit Single	1	2.39	50.00	60.00	5.00	15,000.00
Net single without Packaging	1	2.38	35.80	48.30	4.30	0.00

**More images:**



**Safety notes**

- When installing and using the accessory product for network cabinets, observe the respective safety instructions of the manufacturer or the cabinet system in which you want to use the accessory.

**EU responsible person**

EU based economic operator ensuring the product complies with the required regulations.

ASSMANN Electronic GmbH  
Auf dem Schüffel 3  
Lüdenscheid, Germany  
<https://www.assmann.com>  
[info@assmann.com](mailto:info@assmann.com)