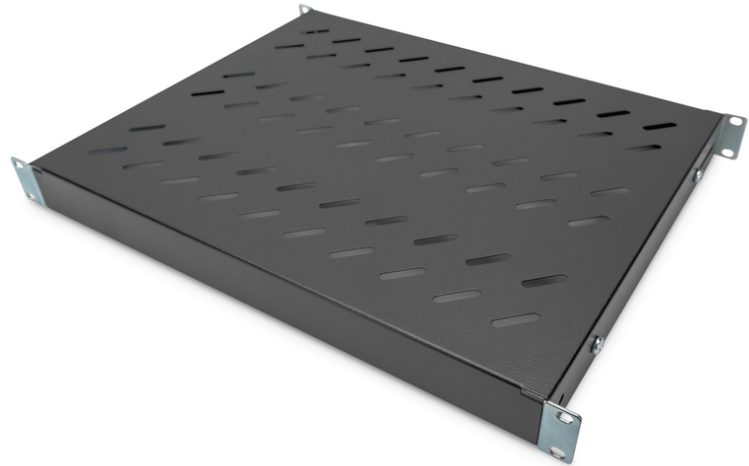


DIGITUS Shelf with Variable Rails for Fixed Mounting in 483 mm (19") Cabinets

DN-97645
EAN 4016032364979



1U fixed shelf for 600 mm depth racks 43x483x358 mm, adjust. up to 550 mm depth, black

The shelves for fixed mounting can be installed easy on the four 483 mm (19") profile rails of your 483 mm (19") network- or server cabinet. Due to their stable, perforated steel sheet with a load capacity of 50 kg, they are the optimal surface for components which are not 483 mm (19") suitable. The fixing rails are can be adjusted if needed.

- for fixed mounting on the four 483 mm (19") profile rails
- sturdy, perforated steel sheet
- incl. fixing material

- 4-point fixing (front- and rear 19" profile rails)
- Color: black, RAL 9005
- Load capacity: 50 kg
- Mounting type: Adjustable mounting rails
- Units: 1
- Weight: 2.38 kg
- Inch form factor (IEC 60297): 482.6 mm (19")
- Suitable cabinet depth: 600 mm

Package contents

- Installation set (screws, cage nuts, washers)

Logistics						
	Number (pcs)	Weight (kg)	Depth (cm)	Width (cm)	Height (cm)	cm ³
Packaging Unit Carton	10	23.94	47.00	43.00	40.00	80,840.00
Packaging Unit Inside	1	2.39	45.20	37.70	5.00	8,520.20
Packaging Unit Single	1	2.39	45.20	37.70	5.00	8,520.20
Net single without Packaging	1	2.38	35.80	48.30	4.30	0.00

More images:

