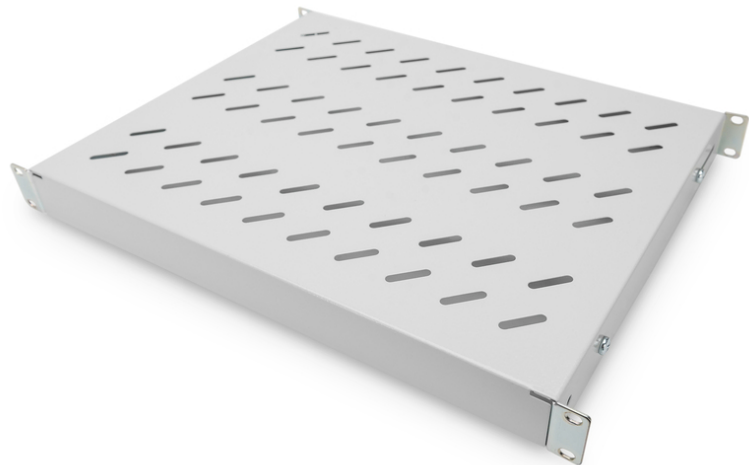


DIGITUS Shelf with Variable Rails for Fixed Mounting in 483 mm (19") Cabinets

DN-97644
 EAN 4016032364962



1U fixed shelf for 600 mm depth racks 44x482x350 mm, adjust. 350-550 mm depth, grey

A montagem das prateleiras com os perfis angulares de 19" nos seus armários de 19" é simples. A placa perfurada estável com elevada capacidade de carga é a superfície de sustentação ideal para os seus elementos. As prateleiras podem ser adquiridas nas cores cinzento claro (RAL 7035) e preto (RAL 9005).

- inc. material de fixação, M6

Attributes

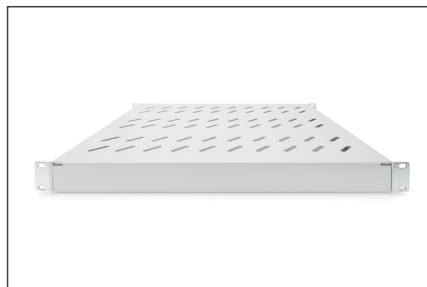
- Color: light grey, RAL 7035
- Load capacity: 50 kg
- Mounting type: Adjustable mounting rails
- Units: 1
- Weight: 2.38 kg
- Inch form factor (IEC 60297): 482.6 mm (19")
- Suitable cabinet depth: 600 mm

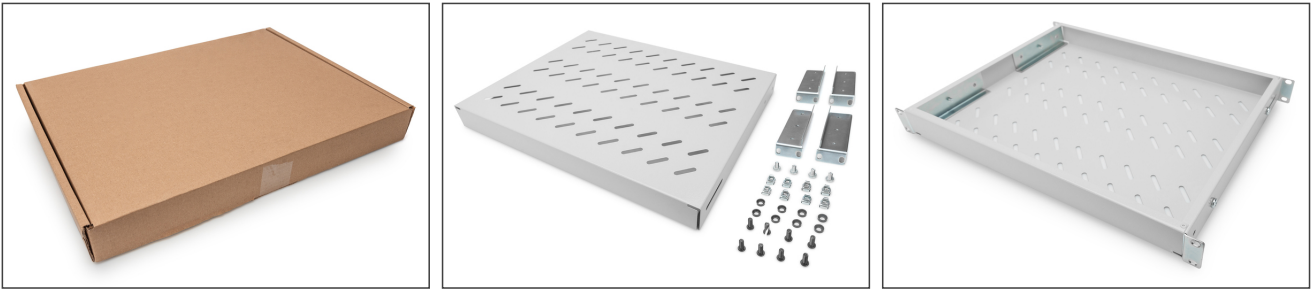
Package contents

- Installation set (screws, cage nuts, washers)

Logistics						
	Number (pcs)	Weight (kg)	Depth (cm)	Width (cm)	Height (cm)	cm ³
Packaging Unit Carton	10	2.94	47.00	53.00	40.00	99,640.00
Packaging Unit Inside	1	0.29	45.20	37.70	5.00	8,520.20
Packaging Unit Single	1	0.29	50.00	60.00	5.00	15,000.00
Net single without Packaging	1	2.38	35.80	48.30	4.40	0.00

More images:



**Safety notes**

- When installing and using the accessory product for network cabinets, observe the respective safety instructions of the manufacturer or the cabinet system in which you want to use the accessory.

EU responsible person

EU based economic operator ensuring the product complies with the required regulations.

ASSMANN Electronic GmbH
Auf dem Schüffel 3
Lüdenscheid, Germany
<https://www.assmann.com>
info@assmann.com