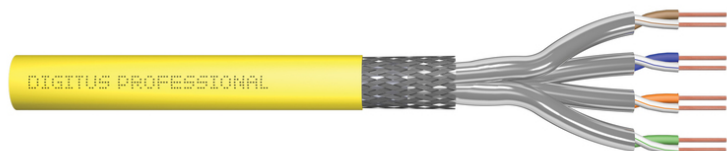


# DIGITUS Cat. 7A S/FTP, installation cable, 500 m, simplex, Dca-s1a d1 a1

DK-1743-A-VH-5  
EAN 4016032363842



### CAT 7A S-FTP installation cable, 1500 MHz, Dca AWG 22/1, 500 m drum, Sx, yellow

The Digitus Cat 7 installation cable is designed for use in the structured data center and the building cabling according to ISO/IEC 11801, DIN EN 50288-4-1, DIN EN 50173, IEC 61156-7, EN 50288-9-1. The cable is perfectly suitable for the transmission of both analog and digital data and also supports POE and POE+. The shielding structure is composed of single shielded pairs with a tinned copper braid, which ensures excellent shielding and electrical values.

#### Future-oriented standards and high-end quality for your network.

- Physical properties:
- Conductor: Bare copper wire, AWG 22/1
- System(s) for the assessment and verification of constancy of performance: System 3
- Insulation: SFS-PE (foamed polyethylene jacket)
- Total number of insulated conductors: 8, twisted into 4 pairs
- Color code: Blue-white, orange-white, green-white, brown-white
- Shielding of the individual pairs: aluminum-laminated polyester film, covers 100%
- Overall shielding: tinned copper braiding
- Outer sheath: Dca to Cca according to EN 50575; LSZH
- Outer sheath thickness (nominal): 0.60 mm (Dca); 0.60 mm (Cca)
- Outer sheath color: Yellow (RAL 1028)
- Mechanical properties:
- Strain relief: 150 N max.
- Dynamic bending radius: 8x AD mm min.
- Static bending radius: 4x AD mm min.
- Transport and storage temperature range: -20 °C to +60 °C

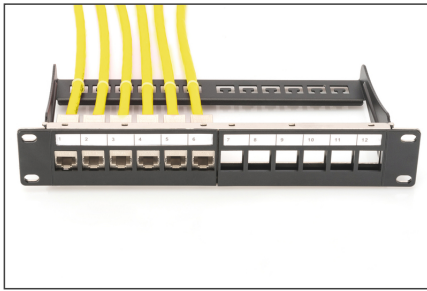
- Operating temperature range: -20 °C to +60 °C
- Installation temperature range: 0 °C to +50 °C
- Outer diameter (nominal): 7.8 mm (Dca); 7.8 mm (Cca)
- Weight (kg/km): 65 kg (Dca); 65 kg (Cca)
- Electrical properties:
- Impedance: 100±5 Ohm @ 1-1000 MHz
- Capacitance: 40 pF/m nominal @ 1 KHz
- Capacitance unbalance (pair-earth): 1.6 pF/m max. @ 1 KHz
- Insulation resistance: 5 GOhm x km min.
- Loop resistance: 147 Ohm/Km max. (2% max. unbalanced resistance)
- Operating voltage: 72 Vdc max.
- Coupling attenuation: CA-Type 1b
- Phase delay: 450 nS/100 m max.
- Time delay: 10 nS/100 m max.
- Separation class: "d" according to EN 50174-2
- NVP: 79%
- Flame spread: EN 60332-1-2 (LSOH-PVC)
- Halogen-free, corrosiveness: EN 60754-1/2 (LSOH)
- Smoke density: EN 61034-2

#### Attributes

- Assortment: Twisted Pair Installation Cables
- Category: CAT 7A
- Shielding: S-FTP, pairs in metal foil and braid shielding
- CPR: Dca
- Length: 500 m
- Color: yellow
- Jacket: LSOH
- Structure: 4 x 2 AWG 22/1, solid twisted pair

Logistics						
	Number (pcs)	Weight (kg)	Depth (cm)	Width (cm)	Height (cm)	cm <sup>3</sup>
Packaging Unit Carton	1	33.50	53.00	53.00	43.50	122,192.00
Packaging Unit Inside	1	33.50	53.00	53.00	43.50	122,192.00
Packaging Unit Single	1	33.50	53.00	53.00	43.50	122,192.00
Net single without Packaging	1	34.00	0.00	0.00	0.00	0.00

More images:



**CAT 7 A S/FTP Installation Cable, 500 m, Simplex, D<sub>ca</sub>**

- 1500 MHz
- 10 Cat.7 Ethernet
- AWG 22/1
- LSZH
- D<sub>ca</sub> CPR class

**DK-1743-A-VHS // CAT 7 A S/FTP Installation Cable, 500m, Simplex, D<sub>ca</sub>**

**Anwendungsbeispiel**  
Example of use

**DK-1743-A-VHS // CAT 7 A S/FTP Installation Cable, 500m, Simplex, D<sub>ca</sub>**

**Kabelquerschnitt**  
Cable cross section

Labels: Adressierung Data point, Adressierung Hubzone, Cr-Shield Cr/Side, Adressierung Taster-pair, Parafolieung Klebmatrix

**Produktinformation Product Information**

<p><b>Abmessungen</b> Line Number: 800 822 1743-A-VHS // CAT 7 A S/FTP Installation Cable, 500m, Simplex, D<sub>ca</sub></p> <p><b>Item Name:</b> DK-1743-A-VHS // CAT 7 A S/FTP Installation Cable, 500m, Simplex, D<sub>ca</sub></p> <p><b>Hersteller:</b> ASSMANN Electronic GmbH, 34109 Lüdenscheid, Germany</p>	<p><b>Physikalische Spezifikationen Physical Properties</b></p> <p><b>Line:</b> CAT 7 A S/FTP</p> <p><b>Standard:</b> IEC 61888-1-1</p> <p><b>Shielding:</b> Cr-Shield Cr/Side</p> <p><b>Conductor:</b> 28 AWG (0.34 mm) / 28 AWG (0.34 mm) / 28 AWG (0.34 mm) / 28 AWG (0.34 mm)</p> <p><b>Conductor:</b> 28 AWG (0.34 mm) / 28 AWG (0.34 mm) / 28 AWG (0.34 mm) / 28 AWG (0.34 mm)</p> <p><b>Conductor:</b> 28 AWG (0.34 mm) / 28 AWG (0.34 mm) / 28 AWG (0.34 mm) / 28 AWG (0.34 mm)</p>
--	---

**Leistungseigenschaften Transmission Properties**

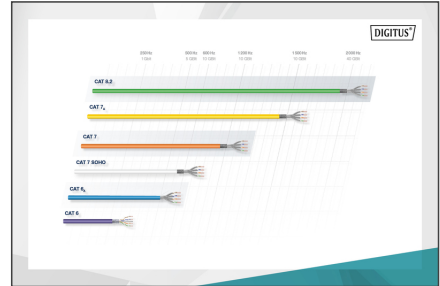
PROZ.	ATT.	MDT	PL-MDT	ACH	PL-ACH	PL	RLT	PL-RLT
1	10	10	10	10	10	10	10	10
10	10	10	10	10	10	10	10	10
100	10	10	10	10	10	10	10	10
1000	10	10	10	10	10	10	10	10
10000	10	10	10	10	10	10	10	10

**Certificate**  
No. 08874-21

**Zertifikat**  
No. 08874-21

**Class G.**

**GHMT Type Approval**



Safety notes

- Data cables must not be bent, stretched or twisted excessively. Sharp bends can damage the cable sheath and lead to failures or short circuits.
- Installation only by trained specialists.
- Installation only in dry rooms.
- The data cable must not be in direct contact with other electrical cables or high-voltage sources in order to avoid electromagnetic interference.

EU responsible person

EU based economic operator ensuring the product complies with the required regulations.

ASSMANN Electronic GmbH  
 Auf dem Schüffel 3  
 Lüdenscheid, Germany  
<https://www.assmann.com>  
[info@assmann.com](mailto:info@assmann.com)