

DIGITUS DIGITUS CAT 5e U-UTP монтажный кабель витая пара

DK-1511-V-305-1
EAN 4016032363811



CAT 5e U-UTP installation cable, 100 MHz Eca (PVC), AWG 24/1, 305 m paper box, sx, grey

Подходит для установки кабельных линий класса D, 100 МГц

- Физическое описание
- Изоляция: PE
- Изоляция: PE
- Общее количество изолированных проводников: 8, свиты в 4 пары
- Цветовой код: сине-белый, оранжево-белый, зелено-белый, коричнево-белый
- Индивидуальная экранировка пар: отсутствует
- Общее экранирование: отсутствует
- Внешняя оболочка: ПВХ

- Цвет: Серый (RAL 7035)
- Цвет: Серый (RAL 7035)
- Механические свойства
- Растяжение: 150 Н макс.

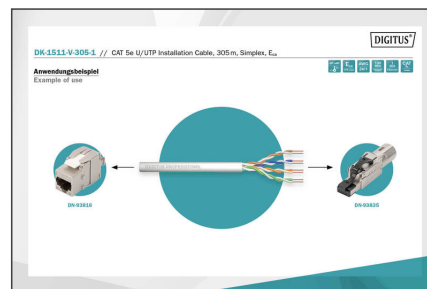
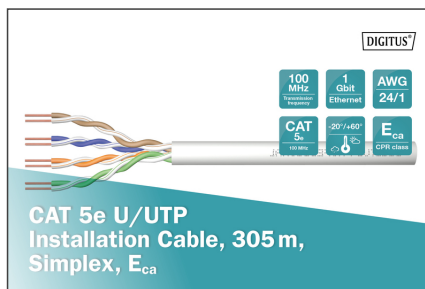
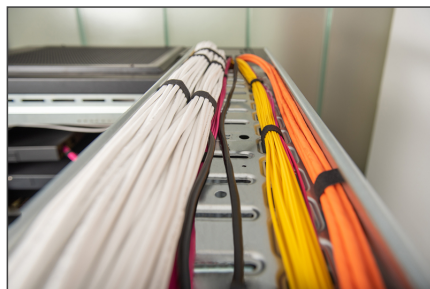
Attributes

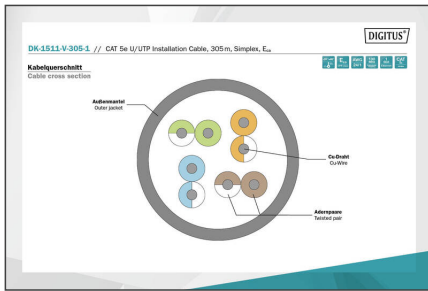
- Assortment: Twisted Pair Installation Cables
- Category: CAT 5e
- Shielding: U-UTP, unshielded
- CPR: Eca
- Length: 305 m
- Color: grey
- Jacket: PVC
- Structure: 4 x 2 AWG 24/1, solid twisted pair

Logistics

	Number (pcs)	Weight (kg)	Depth (cm)	Width (cm)	Height (cm)	cm ³
Packaging Unit Carton	1	9.12	35.00	35.00	20.00	24,500.00
Packaging Unit Inside	1	9.12	35.00	35.00	20.00	24,500.00
Packaging Unit Single	1	9.12	35.00	35.00	20.00	24,500.00
Net single without Packaging	1	0.00	0.00	0.00	0.00	0.00

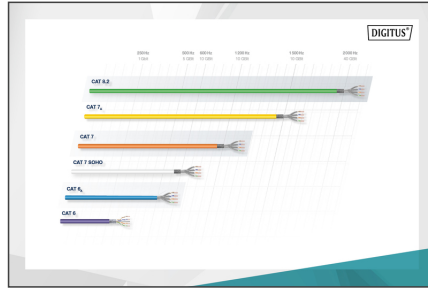
More images:





Produktdaten Produkt Information		Physikalische Eigenschaften Physical Properties	
Produktname	Flat Coaxial Shielded Pair, UTP Installation	Teilenummer	DK.4511-V-305-1
Hersteller	Flat Coaxial Shielded Pair, UTP Installation	Hersteller	Flat Coaxial Shielded Pair, UTP Installation
Material	Flat Coaxial Shielded Pair, UTP Installation	Material	Flat Coaxial Shielded Pair, UTP Installation
Farbe	Flat Coaxial Shielded Pair, UTP Installation	Farbe	Flat Coaxial Shielded Pair, UTP Installation
Abmessungen	Flat Coaxial Shielded Pair, UTP Installation	Abmessungen	Flat Coaxial Shielded Pair, UTP Installation
Netto Masse	Flat Coaxial Shielded Pair, UTP Installation	Netto Masse	Flat Coaxial Shielded Pair, UTP Installation
Gewicht	Flat Coaxial Shielded Pair, UTP Installation	Gewicht	Flat Coaxial Shielded Pair, UTP Installation
Elektrische Eigenschaften Electrical Properties		Mechanische Eigenschaften Mechanical Properties	
Impedanz	Flat Coaxial Shielded Pair, UTP Installation	Impedanz	Flat Coaxial Shielded Pair, UTP Installation
Leitfähigkeit	Flat Coaxial Shielded Pair, UTP Installation	Leitfähigkeit	Flat Coaxial Shielded Pair, UTP Installation
Dielektrische Verlustleistung	Flat Coaxial Shielded Pair, UTP Installation	Dielektrische Verlustleistung	Flat Coaxial Shielded Pair, UTP Installation
Temperaturbereich	Flat Coaxial Shielded Pair, UTP Installation	Temperaturbereich	Flat Coaxial Shielded Pair, UTP Installation
Umweltbedingungen	Flat Coaxial Shielded Pair, UTP Installation	Umweltbedingungen	Flat Coaxial Shielded Pair, UTP Installation
Material	Flat Coaxial Shielded Pair, UTP Installation	Material	Flat Coaxial Shielded Pair, UTP Installation
Hersteller	Flat Coaxial Shielded Pair, UTP Installation	Hersteller	Flat Coaxial Shielded Pair, UTP Installation
Produktname	Flat Coaxial Shielded Pair, UTP Installation	Produktname	Flat Coaxial Shielded Pair, UTP Installation
Hersteller	Flat Coaxial Shielded Pair, UTP Installation	Hersteller	Flat Coaxial Shielded Pair, UTP Installation
Material	Flat Coaxial Shielded Pair, UTP Installation	Material	Flat Coaxial Shielded Pair, UTP Installation
Farbe	Flat Coaxial Shielded Pair, UTP Installation	Farbe	Flat Coaxial Shielded Pair, UTP Installation
Abmessungen	Flat Coaxial Shielded Pair, UTP Installation	Abmessungen	Flat Coaxial Shielded Pair, UTP Installation
Netto Masse	Flat Coaxial Shielded Pair, UTP Installation	Netto Masse	Flat Coaxial Shielded Pair, UTP Installation
Gewicht	Flat Coaxial Shielded Pair, UTP Installation	Gewicht	Flat Coaxial Shielded Pair, UTP Installation

Leistungsparameter Transmissions Properties									
FRQZ	AT	NEZ	FRNEZ	ACH	FRACH	RL	RLNEZ	RLFRNEZ	RLFRACH
1	1	0,2	0,2	0,2	0,2	17	17	17	17
10	0,3	0,2	0,2	0,2	0,2	17	17	17	17
20	0,2	0,2	0,2	0,2	0,2	17	17	17	17
30	0,2	0,2	0,2	0,2	0,2	17	17	17	17
40	0,2	0,2	0,2	0,2	0,2	17	17	17	17
50	0,2	0,2	0,2	0,2	0,2	17	17	17	17
60	0,2	0,2	0,2	0,2	0,2	17	17	17	17
70	0,2	0,2	0,2	0,2	0,2	17	17	17	17
80	0,2	0,2	0,2	0,2	0,2	17	17	17	17
90	0,2	0,2	0,2	0,2	0,2	17	17	17	17
100	0,2	0,2	0,2	0,2	0,2	17	17	17	17



EN Normen	Normenreihe	Leistungsparameter (dB/100m)	Abgleich der Verlustleistung	Standardisierung
B2ca	Sehr hoch	1+	• Symmetrisch • Regelmäßige Verlustleistung • Hohe Verlustleistung	S
C _{ca}	Hoch	3	• Symmetrisch • Regelmäßige Verlustleistung • Hohe Verlustleistung	d
D _{ca}	Mittel	3	• Symmetrisch • Regelmäßige Verlustleistung • Hohe Verlustleistung	a
E _{ca}	Niedrig	3	• Symmetrisch • Regelmäßige Verlustleistung • Hohe Verlustleistung	a



Safety notes

- Data cables must not be bent, stretched or twisted excessively. Sharp bends can damage the cable sheath and lead to failures or short circuits.
- Installation only by trained specialists.
- Installation only in dry rooms.
- The data cable must not be in direct contact with other electrical cables or high-voltage sources in order to avoid electromagnetic interference.

EU responsible person

EU based economic operator ensuring the product complies with the required regulations.

ASSMANN Electronic GmbH
Auf dem Schüffel 3
Lüdenscheid, Germany
<https://www.assmann.com>
info@assmann.com