

# DIGITUS Cat.6A U/UTP installation cable, 500 m, simplex, Eca

DK-1613-A-VH-5  
EAN 4016032344209



### CAT 6A U-UTP installation cable, 500 MHz Eca (EN 50575), AWG 23/1, 500 m drum, sx, blue

The Digitus Cat 6A U/UTP installation cable is designed for use in the structured data center and the building cabling according to ISO/IEC 11801, DIN EN 50288-11-1, DIN EN 50173, IEC 60332-1. The cable is perfectly suitable for the transmission of both analog and digital data and also supports POE and POE+.

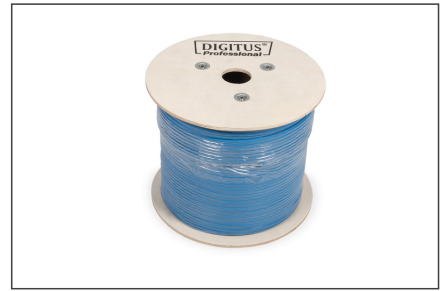
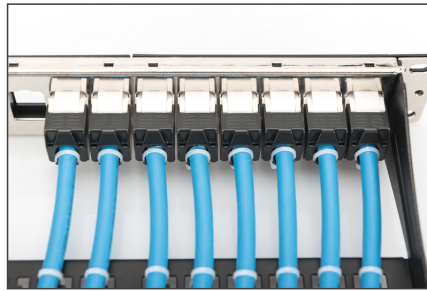
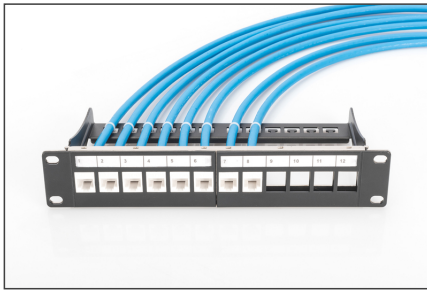
#### Future-oriented standards and high-end quality for your network.

- Physical properties:
- Conductor: Bare annealed copper, olid AWG 23/1
- Insulation: HD-PE (High Density Polyethylene)
- Total number of insulated conductors: 8, twisted in 4 pairs
- Color code: Blue-white, orange-white, green-white, brown-white
- Individual pair shield: None
- Overall shielding: None
- Outer sheath: Eca to B2ca acc. to EN 50575; LSZH
- Outer sheath diameter (nominal): 0,5 mm (Eca); 0,6 mm (Dca); 1,2 mm (Cca); 1,4 mm (B2ca)
- Outer sheath color: Light blue (RAL 5012)
- Mechanical properties:
- Tensile loading: 150N max.
- Dynamic bending radius: 8x AD mm min.
- Static bending radius: 4x AD mm min.
- Shipping- and storage temperature range: -20 °C up to +60 °C

- Operating temperature range: -20 °C up to +75 °C
- Installation temperature range: 0 °C up to +50 °C
- Overall diameter Simplex (nominal): 7,1 mm (Eca); 7,3 mm (Dca); 7,4 mm (Cca); 7,6 mm (B2ca)
- Weight (kg/km): 53 kg (Eca); 54 kg (Dca); 55 kg (Cca); 56 kg (B2ca)
- Electrical properties:
- Impedance: 100±5Ohm @ 1 - 600MHz
- Capacitance: 40 pF/m nominal @ 1 KHz
- Capacitance unbalance (pair-ground): 1.6 pF/m max. @ 1 KHz
- Insulation resistance: 5 GOhm x km min.
- DC loop resistance: 147 Ohm/km max. (2% max. resistance unbalance)
- Voltage resistance: 72 Vdc max.
- Coupling attenuation: CA-Type 2
- Signal propagation delay: 450 nS/100 m max.
- Propagation delay: 10 nS/100 m max.
- Separating class: "c" acc. to EN 50174-2
- NVP: 70%
- Assortment: Twisted Pair Installation Cables
- Category: CAT 6A
- Shielding: U-UTP, unshielded
- CPR: Eca
- Length: 500 m
- Color: light-blue
- Jacket: LSOH
- Structure: 4 x 2 AWG 23/1, solid twisted pair

Logistics						
	Number (pcs)	Weight (kg)	Depth (cm)	Width (cm)	Height (cm)	cm³
Packaging Unit Carton	1	27.50	50.00	50.00	22.00	55,000.00
Packaging Unit Inside	1	27.50	50.00	50.00	22.00	55,000.00
Packaging Unit Single	1	27.50	50.00	50.00	22.00	55,000.00
Net single without Packaging	1	0.00	0.00	0.00	0.00	0.00

More images:



**CAT 6<sub>A</sub> U/UTP Installation Cable, 500m, Simplex, E<sub>ca</sub>**

- AWG 23/1
- 500 MHz
- 10 Gbit Ethernet
- CAT 6<sub>A</sub> (see spec)
- 20°/74°
- LSZH
- E<sub>ca</sub> (see spec)

**DK-1613-A-VH-S // CAT 6<sub>A</sub> U/UTP Installation Cable, 500m, Simplex, E<sub>ca</sub>**

Anwendungsbeispiel  
Example of use

**DK-1613-A-VH-S // CAT 6<sub>A</sub> U/UTP Installation Cable, 500m, Simplex, E<sub>ca</sub>**

Kabelquerschnitt  
Cable cross section

**Produktinformationen Product Information**

<b>Bestellnummer</b>	DK-1613-A-VH-S	<b>Produktname</b>	CAT 6 <sub>A</sub> U/UTP Installation Cable, 500m, Simplex, E <sub>ca</sub>
<b>Hersteller</b>	DIGITUS	<b>Material</b>	PVC
<b>Hersteller-Teilenummer</b>	DK-1613-A-VH-S	<b>Produkttyp</b>	Netzwerk-Kabel
<b>Hersteller-Webseite</b>	www.digitus.com	<b>Produktbeschreibung</b>	500m U/UTP Installation Cable, 500m, Simplex, E <sub>ca</sub>

**Technische Spezifikationen Technical Properties**

<b>Standard</b>	ISO/IEC 61898	<b>Leistungsfähigkeit</b>	10 Gbit/s
<b>Leistungsfähigkeit</b>	10 Gbit/s	<b>Temperaturbereich</b>	0°C bis 60°C
<b>Leistungsfähigkeit</b>	10 Gbit/s	<b>Temperaturbereich</b>	0°C bis 60°C

**Leistungsmerkmale Transmission Properties**

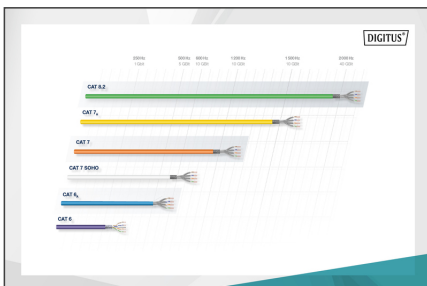
Typ	AWG	23	24	25	26	27	28	29	30
100	23	24	25	26	27	28	29	30	31
100	23	24	25	26	27	28	29	30	31
100	23	24	25	26	27	28	29	30	31
100	23	24	25	26	27	28	29	30	31
100	23	24	25	26	27	28	29	30	31

**intertek**

RoHS Verified Certificate of Compliance Number: 10000000000000000000

intertek

RoHS Verified Certificate of Compliance Number: 10000000000000000000



**DIGITUS**

CEP-Bestimmung  
Drehmoment  
Leistungsfähigkeit  
Anforderungen an verdrillte Paare  
Zusammenfassung

**B2<sub>ca</sub>** Schlechtes Strapping  
**C<sub>ca</sub>** Hohe Kapazität  
**D<sub>ca</sub>** Metall  
**E<sub>ca</sub>** Geringe Latenz

**1+**  
**3**

**C<sub>ca</sub> s1a d1 a1**

