

# DIGITUS Cat.6A U/UTP installation cable, 500 m, simplex, Eca

DK-1613-A-VH-5  
EAN 4016032344209



### CAT 6A U-UTP installation cable, 500 MHz Eca (EN 50575), AWG 23/1, 500 m drum, sx, blue

The Digitus Cat 6A U/UTP installation cable is designed for use in the structured data center and the building cabling according to ISO/IEC 11801, DIN EN 50288-11-1, DIN EN 50173, IEC 60332-1. The cable is perfectly suitable for the transmission of both analog and digital data and also supports POE and POE+.

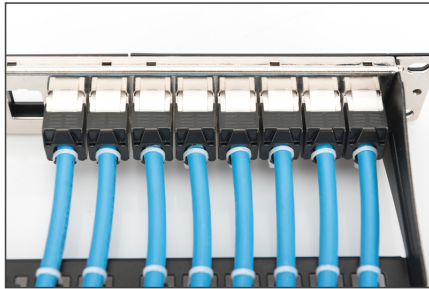
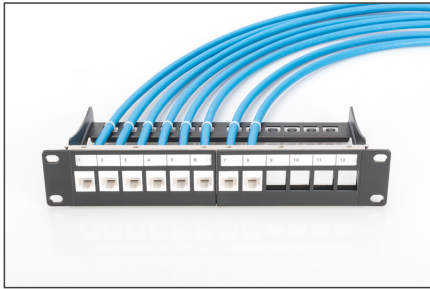
#### Future-oriented standards and high-end quality for your network.

- Physical properties:
- Conductor: Bare annealed copper, olid AWG 23/1
- Insulation: HD-PE (High Density Polyethylene)
- Total number of insulated conductors: 8, twisted in 4 pairs
- Color code: Blue-white, orange-white, green-white, brown-white
- Individual pair shield: None
- Overall shielding: None
- Outer sheath: Eca to B2ca acc. to EN 50575; LSZH
- Outer sheath diameter (nominal): 0,5 mm (Eca); 0,6 mm (Dca); 1,2 mm (Cca); 1,4 mm (B2ca)
- Outer sheath color: Light blue (RAL 5012)
- Mechanical properties:
- Tensile loading: 150N max.
- Dynamic bending radius: 8x AD mm min.
- Static bending radius: 4x AD mm min.
- Shipping- and storage temperature range: -20 °C up to +60 °C

- Operating temperature range: -20 °C up to +75 °C
- Installation temperature range: 0 °C up to +50 °C
- Overall diameter Simplex (nominal): 7,1 mm (Eca); 7,3 mm (Dca); 7,4 mm (Cca); 7,6 mm (B2ca)
- Weight (kg/km): 53 kg (Eca); 54 kg (Dca); 55 kg (Cca); 56 kg (B2ca)
- Electrical properties:
- Impedance: 100±5Ohm @ 1 - 600MHz
- Capacitance: 40 pF/m nominal @ 1 KHz
- Capacitance unbalance (pair-ground): 1.6 pF/m max. @ 1 KHz
- Insulation resistance: 5 GOhm x km min.
- DC loop resistance: 147 Ohm/km max. (2% max. resistance unbalance)
- Voltage resistance: 72 Vdc max.
- Coupling attenuation: CA-Type 2
- Signal propagation delay: 450 nS/100 m max.
- Propagation delay: 10 nS/100 m max.
- Separating class: "c" acc. to EN 50174-2
- NVP: 70%
- Assortment: Twisted Pair Installation Cables
- Category: CAT 6A
- Shielding: U-UTP, unshielded
- CPR: Eca
- Length: 500 m
- Color: light-blue
- Jacket: LSOH
- Structure: 4 x 2 AWG 23/1, solid twisted pair

Logistics						
	Number (pcs)	Weight (kg)	Depth (cm)	Width (cm)	Height (cm)	cm³
Packaging Unit Carton	1	27.50	50.00	50.00	22.00	55,000.00
Packaging Unit Inside	1	27.50	50.00	50.00	22.00	55,000.00
Packaging Unit Single	1	27.50	50.00	50.00	22.00	55,000.00
Net single without Packaging	1	0.00	0.00	0.00	0.00	0.00

More images:



**DIGITUS**

AWG 23/1, 500 MHz, 10 Gbit Ethernet, CAT 6a, 20°/175°, LSZH, Eca, CPE class

**CAT 6a U/UTP Installation Cable, 500 m, Simplex, Eca**

**DIGITUS**

DK-1613-A-VH-5 // CAT 6, U/UTP Installation Cable, 500m, Simplex, Eca

Anwendungsbild / Example of use

DK-5022

**DIGITUS**

DK-1613-A-VH-5 // CAT 6, U/UTP Installation Cable, 500m, Simplex, Eca

Kabelquerschnitt / Cable cross section

Adressiert / Twisted pair, Co-Bund / Bundle, Adresslos / Untwisted pair

**DIGITUS**

Produktdaten Product Information	Physikalische Spezifikationen Physical Properties
<b>Bestandteile Parts</b> 1x 500m CAT 6a U/UTP Installation Cable, 500m, Simplex, Eca	<b>Farbe Color</b> Blau / Blue
<b>Bestandteile Parts</b> 1x 500m CAT 6a U/UTP Installation Cable, 500m, Simplex, Eca	<b>Material Material</b> Polyethylen / Polyethylene
<b>Bestandteile Parts</b> 1x 500m CAT 6a U/UTP Installation Cable, 500m, Simplex, Eca	<b>Lebensdauer Lifetime</b> 10 Jahre / 10 years
<b>Bestandteile Parts</b> 1x 500m CAT 6a U/UTP Installation Cable, 500m, Simplex, Eca	<b>Temperaturbereich Temperature range</b> -25°C bis +75°C / -25°F bis +165°F
<b>Bestandteile Parts</b> 1x 500m CAT 6a U/UTP Installation Cable, 500m, Simplex, Eca	<b>Flammverhalten Flame retardancy</b> LSZH / Low Smoke Zero Halogen
<b>Bestandteile Parts</b> 1x 500m CAT 6a U/UTP Installation Cable, 500m, Simplex, Eca	<b>CE-Zertifizierung CE Certification</b> RoHS / REACH / WEEE

**DIGITUS**

Leitungsparameter Transmission Properties

PAIR	AT	MT	PL NEXT	AD	PL ALN	AL	ELEXT	PL NEXT
1-2	1,7	1,8	1,6	1,4	1,2	1,2	28	16
3-4	1,8	1,9	1,7	1,5	1,3	1,3	29	17
5-6	1,9	2,0	1,8	1,6	1,4	1,4	30	18
7-8	2,0	2,1	1,9	1,7	1,5	1,5	31	19
9-10	2,1	2,2	2,0	1,8	1,6	1,6	32	20
11-12	2,2	2,3	2,1	1,9	1,7	1,7	33	21

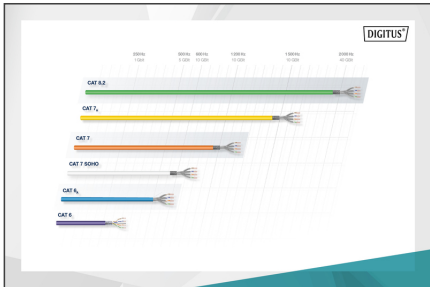
**intertek**

ITS Verified Calibration Certificate Number: 1608085001-001

1608085001-001

1608085001-001

1608085001-001



**DIGITUS**

CEP-Einstellung / Pre-configuration

Standardwert / Standard value

Leistungsfähigkeit (MHz) / Capacity of performance (MHz)

Adaptier die verifizierte Werte / Adapt the verified values

Zustellweise / Delivery method

<b>B2ca</b>	Standardwert / Standard value	1+	Standardwert / Standard value
<b>Cca</b>	Standardwert / Standard value	3	Standardwert / Standard value
<b>Dca</b>	Standardwert / Standard value	3	Standardwert / Standard value
<b>Eca</b>	Standardwert / Standard value	3	Standardwert / Standard value

Standardwert / Standard value

**Cca** **s1a** **d1** **a1**