

DIGITUS Cat.6A U/FTP installation cable, 100 m, simplex, Eca

DK-1623-A-VH-1
EAN 4016032344117



CAT 6A U-FTP installation cable, 500 MHz Eca (EN 50575), AWG 23/1, 100m paper box, sx, blue

The Digitus® Cat.6A U/FTP installation cable is characterized by the following cable construction 4x2x AWG23/1 and reaches a transmission frequency up to 500 MHz. The halogen free cable jacket is conform to the standard IEC 60332-1, FRNC-B, LSZH-1 and CPR Euro class Eca. The cable is suitable for building structured cabling in the secondary and tertiary area. Compliant with the following standards ISO/IEC 11801, DIN EN 50173, DIN EN 50288-10-1.

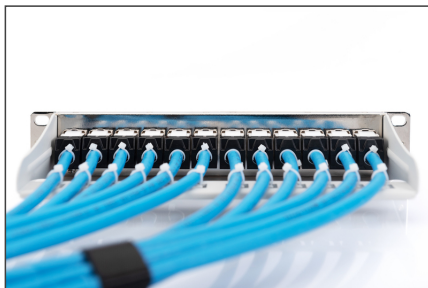
Future-oriented standards and high-end quality for your network.

- Physical properties:
- Conductor: Bare annealed copper, solid AWG 23/1
- System/s of AVCP: AVCP 3
- Total number of insulated conductors: 8, twisted in 4 pairs
- Color code: Blue-white, orange-white, green-white, brown-white
- Individual pair shielding: Aluminum foil, providing 100 % coverage
- Overall shielding: None, with drain wire
- Outer sheath: Eca to B2ca acc. to EN 50575; LSZH
- Outer sheath color: Light blue (RAL 5012)
- Mechanical properties:
- Tensile loading: 150N max.
- Dynamic bending radius: 8x AD mm min.
- Static bending radius: 4x AD mm min.
- Shipping- and storage temperature range: -20 °C up to +60 °C
- Operating temperature range: -20 °C up to +75 °C

- Installation temperature range: 0 °C up to +50 °C
- Overall diameter Simplex (nominal): 7.0 (Eca); 7,2 mm (Dca); 7,6 mm (Cca); 7,6 mm (B2ca)
- Weight (kg/km): 56 kg (Eca); 57 kg (Dca); 58 kg (Cca); 58 kg (B2ca)
- Electrical properties:
- Impedance: 100±15 Ohm @ 4 - 100MHz; 100±25 Ohm @100-500 MHz
- Capacitance: 45 pF/m nominal @ 1 KHz
- Capacitance unbalance (pair-ground): 1.6 pF/m max. @ 1 KHz
- Insulation resistance: 5 GOhm x km min.
- DC loop resistance: 190 Ohm/km max. (2% max. resistance unbalance)
- Voltage resistance: 72 Vdc max.
- Coupling attenuation: CA-Type 2
- Signal propagation delay: 450 nS/100 m max.
- Propagation delay: 15 nS/100 m max.
- Separating class: "c" acc. to EN 50174-2
- NVP: 70%
- Assortment: Twisted Pair Installation Cables
- Category: CAT 6A
- Shielding: U-FTP, pairs in metal foil
- CPR: Eca
- Length: 100 m
- Color: light-blue
- Jacket: LSOH
- Structure: 4 x 2 AWG 23/1, solid twisted pair

Logistics						
	Number (pcs)	Weight (kg)	Depth (cm)	Width (cm)	Height (cm)	cm³
Packaging Unit Carton	1	4.50	33.00	32.00	11.00	11,616.00
Packaging Unit Inside	1	4.50	33.00	32.00	11.00	11,616.00
Packaging Unit Single	1	4.50	33.00	32.00	11.00	11,616.00
Net single without Packaging	1	0.00	0.00	0.00	0.00	0.00

More images:



DIGITUS

AWG
23/1

500 MHz
Transmission

10 Cat.6
Ethernet

CAT 6A
Eca

$\geq 207V$ $\leq 75V$

LSZH

Eca
CPR class

CAT 6A U/FTP
Installation Cable, 100 m,
Simplex, E_{ca}

DIGITUS

DK-1623-A-VH-1 // CAT 6, U/FTP Installation Cable, 100m, Simplex, E_{ca}

Anwendungsbeispiel
Example of use

DIGITUS

DK-1623-A-VH-1 // CAT 6, U/FTP Installation Cable, 100m, Simplex, E_{ca}

Kabelquerschnitt
Cable cross section

Außenmantel Outer jacket
 Adressierung Twisted pair
 Cu-Gehalt Copper
 Abschirmung Shielding
 Abschirmung Twisted pair
 Panzerung Shield screen

DIGITUS

Produktdaten Product Information	Physikalische Spezifikationen Physical Properties
Hersteller/Manufacturer: DIGITUS AWG: 23/1 AWG 23/1: 1,35 mm AWG 23/1: 1,35 mm AWG 23/1: 1,35 mm	Leiter/Conductor: Solid Leitungsstruktur/Conductor Structure: 4x25 Leitungsstruktur/Conductor Structure: 4x25 Leitungsstruktur/Conductor Structure: 4x25
Stärke/Strength: 100 m Stärke/Strength: 100 m Stärke/Strength: 100 m	Leitungsstruktur/Conductor Structure: 4x25 Leitungsstruktur/Conductor Structure: 4x25 Leitungsstruktur/Conductor Structure: 4x25
Leitungsstruktur/Conductor Structure: 4x25 Leitungsstruktur/Conductor Structure: 4x25 Leitungsstruktur/Conductor Structure: 4x25	Leitungsstruktur/Conductor Structure: 4x25 Leitungsstruktur/Conductor Structure: 4x25 Leitungsstruktur/Conductor Structure: 4x25

DIGITUS

Leitungsstruktur Transmission Properties

AWG	STP	MT	PL	PL	PL	PL	PL	PL	PL
23	23	23	23	23	23	23	23	23	23
23	23	23	23	23	23	23	23	23	23
23	23	23	23	23	23	23	23	23	23
23	23	23	23	23	23	23	23	23	23
23	23	23	23	23	23	23	23	23	23

DIGITUS

ETL Verified Certificate of Conformance Number: 1148280207401

This device has been certified to comply with the applicable safety and EMC standards and requirements of the applicable regulatory agencies.

GHMT

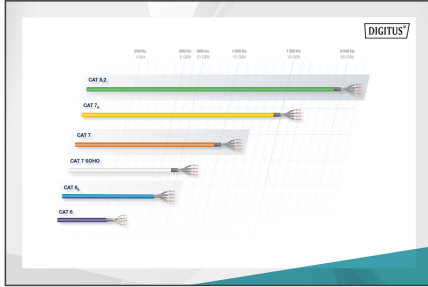
Certificate No. 168884-15

Category 6a

GHMT

Zertifikat No. 168884-15

Kategorie 6a



DIGITUS

CE Marking

B2 Schall hoch High	1+	S Flammhemmung Flame retardant
C_{ca} Hoch High	3	d Nicht-entzündlich Non-flammable
D_{ca} Metall Metal	a1	a Nicht-entzündlich Non-flammable
E_{ca} Gering Low	a1	

