

DIGITUS Cat.6A U/UTP installation cable, 305 m, simplex, Eca

DK-1613-A-VH-305
EAN 4016032344100



CAT 6A U-UTP installation cable, 500 MHz Eca (EN 50575), AWG 23/1, 305 m drum, sx, blue

The Digitus® Cat.6A U/UTP installation cable is characterized by the following cable construction 4x2x AWG23/1 and reaches a transmission frequency up to 500 MHz. The halogen free cable jacket is conform to the standard IEC 60332-1, FRNC-B, LSZH-1 and CPR Euro class Eca. The cable is suitable for building structured cabling in the secondary and tertiary area. Compliant with the following standards ISO/IEC 11801, DIN EN 50173, DIN EN 50288-11-1.

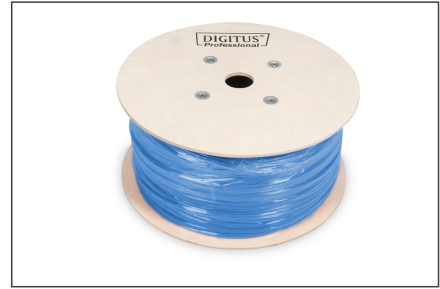
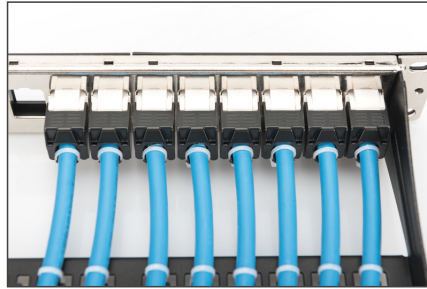
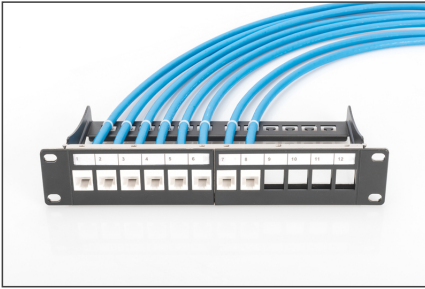
Future-oriented standards and high-end quality for your network.

- Physical properties:
- Conductor: Bare annealed copper, olid AWG 23/1
- System/s of AVCP: AVCP 3
- Insulation: HD-PE (High Density Polyethylene)
- Total number of insulated conductors: 8, twisted in 4 pairs
- Color code: Blue-white, orange-white, green-white, brown-white
- Individual pair shield: None
- Overall shielding: None
- Outer sheath: Eca to B2ca acc. to EN 50575; LSZH
- Outer sheath diameter (nominal): 0,5 mm (Eca); 0,6 mm (Dca); 1,2 mm (Cca); 1,4 mm (B2ca)
- Outer sheath color: Light blue (RAL 5012)
- Mechanical properties:
- Tensile loading: 150N max.
- Dynamic bending radius: 8x AD mm min.
- Static bending radius: 4x AD mm min.

- Shipping- and storage temperature range: -20 °C up to +60 °C
- Operating temperature range: -20 °C up to +75 °C
- Installation temperature range: 0 °C up to +50 °C
- Overall diameter Simplex (nominal): 7,1 mm (Eca); 7,3 mm (Dca); 7,4 mm (Cca); 7,6 mm (B2ca)
- Weight (kg/km): 53 kg (Eca); 54 kg (Dca); 55 kg (Cca); 56 kg (B2ca)
- Electrical properties:
- Impedance: 100±50hm @ 1 - 600MHz
- Capacitance: 40 pF/m nominal @ 1 KHz
- Capacitance unbalance (pair-ground): 1.6 pF/m max. @ 1 KHz
- Insulation resistance: 5 GOhm x km min.
- DC loop resistance: 147 Ohm/km max. (2% max. resistance unbalance)
- Voltage resistance: 72 Vdc max.
- Coupling attenuation: CA-Type 2
- Signal propagation delay: 450 nS/100 m max.
- Propagation delay: 10 nS/100 m max.
- Separating class: "c" acc. to EN 50174-2
- NVP: 70%
- Assortment: Twisted Pair Installation Cables
- Category: CAT 6A
- Shielding: U-UTP, unshielded
- CPR: Eca
- Length: 305 m
- Color: light-blue
- Jacket: LSOH
- Structure: 4 x 2 AWG 23/1, solid twisted pair

Logistics						
	Number (pcs)	Weight (kg)	Depth (cm)	Width (cm)	Height (cm)	cm³
Packaging Unit Carton	1	17.00	39.00	39.00	27.00	41,067.00
Packaging Unit Inside	1	17.00	39.00	39.00	27.00	41,067.00
Packaging Unit Single	1	17.00	39.00	39.00	27.00	41,067.00
Net single without Packaging	1	0.00	0.00	0.00	0.00	0.00

More images:



DIGITUS

AWG 23/1

500 MHz

10 Gbit Ethernet

20°/75°

LSZH

E_{ca} CPRI class

CAT 6_A U/UTP Installation Cable, 305 m, Simplex, E_{ca}

DIGITUS

DK-1613-A-VH-305 // CAT 6_A U/UTP Installation Cable, 305 m, Simplex, E_{ca}

Anwendungsbeispiel
Example of use

DIGITUS

DK-1613-A-VH-305 // CAT 6_A U/UTP Installation Cable, 305 m, Simplex, E_{ca}

Kabelquerschnitt
Cable cross section

DIGITUS

Produktdatenblatt Produkt Information	Physikalische Spezifikationen Physical Properties
Identifikation Hersteller: DIGITUS Produktname: CAT 6 _A U/UTP Installation Cable, 305 m, Simplex, E _{ca} Part Number: DK-1613-A-VH-305	Standard TIA/EIA-568-C.2 ISO/IEC 11801 Class EA IEC 60332-1-2 IEC 60332-3-21 IEC 60332-3-22 IEC 60332-3-23
Technische Eigenschaften Technical Properties Kategorie: CAT 6 _A Kategoriecode: 6 Kategoriebeschreibung: CAT 6 _A U/UTP Installation Cable, 305 m, Simplex, E _{ca} Kategoriecode: 6 Kategoriebeschreibung: CAT 6 _A U/UTP Installation Cable, 305 m, Simplex, E _{ca}	Physikalische Eigenschaften Physical Properties Kategoriecode: 6 Kategoriebeschreibung: CAT 6 _A U/UTP Installation Cable, 305 m, Simplex, E _{ca} Kategoriecode: 6 Kategoriebeschreibung: CAT 6 _A U/UTP Installation Cable, 305 m, Simplex, E _{ca}
Mechanische Eigenschaften Mechanical Properties Kategoriecode: 6 Kategoriebeschreibung: CAT 6 _A U/UTP Installation Cable, 305 m, Simplex, E _{ca} Kategoriecode: 6 Kategoriebeschreibung: CAT 6 _A U/UTP Installation Cable, 305 m, Simplex, E _{ca}	Mechanische Eigenschaften Mechanical Properties Kategoriecode: 6 Kategoriebeschreibung: CAT 6 _A U/UTP Installation Cable, 305 m, Simplex, E _{ca} Kategoriecode: 6 Kategoriebeschreibung: CAT 6 _A U/UTP Installation Cable, 305 m, Simplex, E _{ca}

DIGITUS

Leistungsmerkmale Transmission Properties

10BASE-T	100BASE-TX	1000BASE-T	10GBASE-T	10GBASE-KR	10GBASE-SR	10GBASE-LR	10GBASE-ER
10	100	1000	10000	10000	10000	10000	10000
10	100	1000	10000	10000	10000	10000	10000
10	100	1000	10000	10000	10000	10000	10000
10	100	1000	10000	10000	10000	10000	10000
10	100	1000	10000	10000	10000	10000	10000
10	100	1000	10000	10000	10000	10000	10000
10	100	1000	10000	10000	10000	10000	10000
10	100	1000	10000	10000	10000	10000	10000

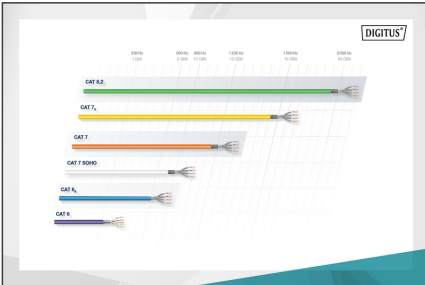
intertek

intertek

RoHS Compliant

RoHS Compliant

RoHS Compliant



DIGITUS

CAT 8.2

CAT 7

CAT 7 S/FTP

CAT 6A

CAT 6

Leistungsmerkmale Transmission Properties

B2 Cat8

C_{ca} Cat6

D_{ca} Cat6

E_{ca} Cat6

Leistungsmerkmale Transmission Properties

B2 Cat8

C_{ca} Cat6

D_{ca} Cat6

E_{ca} Cat6

