

DIGITUS Cat.6A U/UTP installation cable, 305 m, simplex, Eca

DK-1613-A-VH-305
EAN 4016032344100



CAT 6A U-UTP installation cable, 500 MHz Eca (EN 50575), AWG 23/1, 305 m drum, sx, blue

The Digitus® Cat.6A U/UTP installation cable is characterized by the following cable construction 4x2x AWG23/1 and reaches a transmission frequency up to 500 MHz. The halogen free cable jacket is conform to the standard IEC 60332-1, FRNC-B, LSZH-1 and CPR Euro class Eca. The cable is suitable for building structured cabling in the secondary and tertiary area. Compliant with the following standards ISO/IEC 11801, DIN EN 50173, DIN EN 50288-11-1.

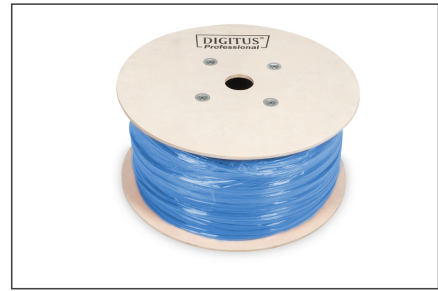
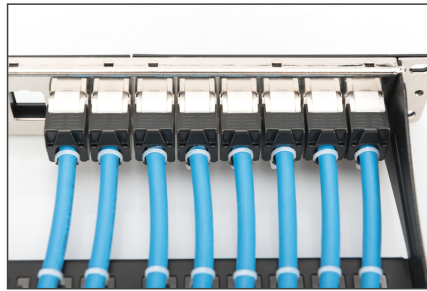
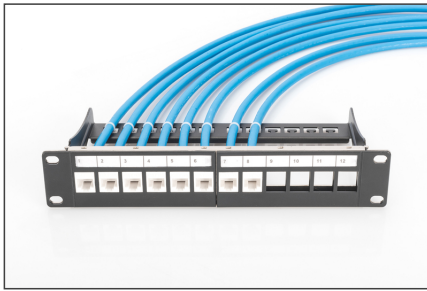
Future-oriented standards and high-end quality for your network.

- Physical properties:
- Conductor: Bare annealed copper, olid AWG 23/1
- System/s of AVCP: AVCP 3
- Insulation: HD-PE (High Density Polyethylene)
- Total number of insulated conductors: 8, twisted in 4 pairs
- Color code: Blue-white, orange-white, green-white, brown-white
- Individual pair shield: None
- Overall shielding: None
- Outer sheath: Eca to B2ca acc. to EN 50575; LSZH
- Outer sheath diameter (nominal): 0,5 mm (Eca); 0,6 mm (Dca); 1,2 mm (Cca); 1,4 mm (B2ca)
- Outer sheath color: Light blue (RAL 5012)
- Mechanical properties:
- Tensile loading: 150N max.
- Dynamic bending radius: 8x AD mm min.
- Static bending radius: 4x AD mm min.

- Shipping- and storage temperature range: -20 °C up to +60 °C
- Operating temperature range: -20 °C up to +75 °C
- Installation temperature range: 0 °C up to +50 °C
- Overall diameter Simplex (nominal): 7,1 mm (Eca); 7,3 mm (Dca); 7,4 mm (Cca); 7,6 mm (B2ca)
- Weight (kg/km): 53 kg (Eca); 54 kg (Dca); 55 kg (Cca); 56 kg (B2ca)
- Electrical properties:
- Impedance: 100±50hm @ 1 - 600MHz
- Capacitance: 40 pF/m nominal @ 1 KHz
- Capacitance unbalance (pair-ground): 1.6 pF/m max. @ 1 KHz
- Insulation resistance: 5 GOhm x km min.
- DC loop resistance: 147 Ohm/km max. (2% max. resistance unbalance)
- Voltage resistance: 72 Vdc max.
- Coupling attenuation: CA-Type 2
- Signal propagation delay: 450 nS/100 m max.
- Propagation delay: 10 nS/100 m max.
- Separating class: "c" acc. to EN 50174-2
- NVP: 70%
- Assortment: Twisted Pair Installation Cables
- Category: CAT 6A
- Shielding: U-UTP, unshielded
- CPR: Eca
- Length: 305 m
- Color: light-blue
- Jacket: LSOH
- Structure: 4 x 2 AWG 23/1, solid twisted pair

Logistics						
	Number (pcs)	Weight (kg)	Depth (cm)	Width (cm)	Height (cm)	cm³
Packaging Unit Carton	1	17.00	39.00	39.00	27.00	41,067.00
Packaging Unit Inside	1	17.00	39.00	39.00	27.00	41,067.00
Packaging Unit Single	1	17.00	39.00	39.00	27.00	41,067.00
Net single without Packaging	1	0.00	0.00	0.00	0.00	0.00

More images:



CAT 6_A U/UTP Installation Cable, 305 m, Simplex, E_{ca}

- AWG 23/1
- 500 MHz
- 10 Gbit Ethernet
- 20°/75°
- LSZH
- E_{ca} CPRI class

DK-1613-A-VH-305 // CAT 6_A U/UTP Installation Cable, 305 m, Simplex, E_{ca}

Beispiel einer Anwendung
Example of use

DK-1613-A-VH-305 // CAT 6_A U/UTP Installation Cable, 305 m, Simplex, E_{ca}

Kabelquerschnitt
Cable cross section

Produktinformationen Product Information

Identifikation	Produktcode (part number)	DK-1613-A-VH-305
Produktname	Produktbeschreibung	305 m CAT 6 _A U/UTP Installation Cable, Simplex, E _{ca}
Produktcode	Produktbeschreibung	305 m CAT 6 _A U/UTP Installation Cable, Simplex, E _{ca}
Produktbeschreibung	Produktbeschreibung	305 m CAT 6 _A U/UTP Installation Cable, Simplex, E _{ca}
Produktbeschreibung	Produktbeschreibung	305 m CAT 6 _A U/UTP Installation Cable, Simplex, E _{ca}
Produktbeschreibung	Produktbeschreibung	305 m CAT 6 _A U/UTP Installation Cable, Simplex, E _{ca}

Leistungsmerkmale Performance Properties

Standard	AWG	Pair	Next	ACR	PS-ACR	AL	SLR/PL	PS-SLR/PL
ISO/IEC 11801 Class EA	23	1	1	23	23	23	19	19
ISO/IEC 11801 Class FA	23	1	1	23	23	23	19	19
ISO/IEC 11801 Class FA	23	1	1	23	23	23	19	19
ISO/IEC 11801 Class FA	23	1	1	23	23	23	19	19
ISO/IEC 11801 Class FA	23	1	1	23	23	23	19	19

intertek

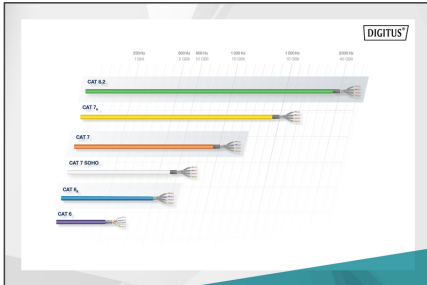
Verifizierter Hersteller von Gütebescheinigungen (certified manufacturer)

ISO 9001:2015

ISO 14001:2015

ISO 45001:2018

SGS



CAT-Klassifizierung

Die CAT-Klassifizierung ist eine Kennzeichnung für die Qualität und Leistungsfähigkeit eines Kabels.

Die Klassifizierung ist durch die Buchstaben A bis E und die Zahl der Drhtpaare (P, S, M, L) gekennzeichnet.

Die Buchstaben A bis E stehen für die verschiedenen Kabelklassen (Cat 5e bis Cat 8).

Die Buchstaben P, S, M, L stehen für die verschiedenen Leiterarten (Platz, Stecker, Misch, Leiter).

Die Zahlen 1, 2, 3, 4 stehen für die verschiedenen Drhtpaaranzahlen (1, 2, 3, 4 Drhtpaare).

