

# DIGITUS CAT 6, Class E High Density Patch Panel, shielded, black

DN-91624S-SL-SH  
EAN 4016032323297



**CAT 6 Patch Panel, shielded, 24-port RJ45 with shutter, 8P8C, LSA, 0.5U, 19" rack mount, bl**

The DIGITUS® 24-port 0.5U patch panel offers you a high packing density. As the panel is only 0.5U high, 48 ports (2 panels with 24 ports each) can be installed on 1U.

**Very space-saving (only 0.5U) - With dust caps - Outstanding performance and connection quality for your network.**

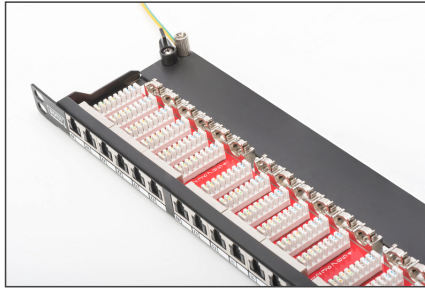
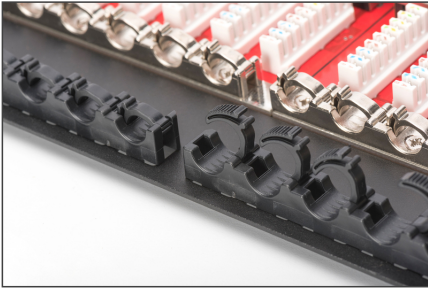
- Application areas: Up to 250 MHz, 1GBase-T
- Standards: ISO/IEC 11801 3rd Ed., EN 50173-1, EIA/TIA 568-C
- General properties:
- Suitable for 483 mm (19") rack mounting
- RJ45 sockets, 8P8C
- Cable installation via LSA strips, color-coded according to EIA/TIA 568 A & B
- Cable fixation by means of quick latches
- Central earthing connection
- 360° shield contacting
- Integrated dust protection flap
- Mechanical properties:
- Housing material: 1.5 mm galvanized, cold-rolled steel according to EN1.4301, UNS S30400, AISI 304 and LMSAD110
- RJ45 socket material: ABS UL 94V-0

- Contact RJ45 socket: Nickel-plated phosphor bronze, 0.5 µ gold-plated contact
- RJ-45 shielding: Nickel-plated bronze
- LSA cutting clamp: Krone LSA+, UL 94V-2, galvanized phosphor bronze
- Earthing wire: Not included in the scope of delivery
- Printed circuit board: FR4, UL 94V-0
- Physical properties:
- Insertion force: 30N max. (IEC 60603-7-5)
- Tensile load: 7.7 kg between socket and plug
- Operating temperature: -20° C to +70 °C (ISO/IEC 11801, EN 50173-1, ANSI/TIA/EIA 568 C)
- Socket mating cycle: > 750 acc. to ISO/IEC 11801, IEC 60603-7-5
- Terminal: > 200 acc. to ISO/IEC 11801, IEC 60603-7-5
- Core receptacle: 22-26 AWG solid and stranded conductors
- Insulation resistance: > 500 MOhm
- Contact resistance: < 20 milliOhms
- Dielectric strength: 1000 VDC (contact/contact), 1500 VDC (contact/ground)
- HE: 0.5

**Attributes**

- Color: black, RAL 9005
- Ports: 24
- Category: CAT 6

Logistics						
	Number (pcs)	Weight (kg)	Depth (cm)	Width (cm)	Height (cm)	cm³
Packaging Unit Carton	10	12.86	53.50	25.50	25.00	34,106.20
Packaging Unit Inside	1	1.29	4.00	53.00	12.00	2,544.00
Packaging Unit Single	1	1.29	4.00	53.00	12.00	2,544.00
Net single without Packaging	1	0.00	0.00	0.00	0.00	0.00

**More images:****Safety notes**

- Protect product from moisture
- Avoid antistatic charging when installing the product
- Observe the specifications of the raw cable manufacturer during installation

**EU responsible person**

EU based economic operator ensuring the product complies with the required regulations.

ASSMANN Electronic GmbH  
Auf dem Schüffel 3  
Lüdenscheid, Germany  
<https://www.assmann.com>  
[info@assmann.com](mailto:info@assmann.com)