

# DIGITUS Fiber Optic Multimode Patchcord, OM4, LC / LC

DK-2533-01-4  
EAN 4016032308799



**FO patch cord, duplex, LC to LC MM OM4 50/125 μ, 1 m**

FO patch cord, duplex, LC to LC,MM OM4 50/125 μ, 1 m

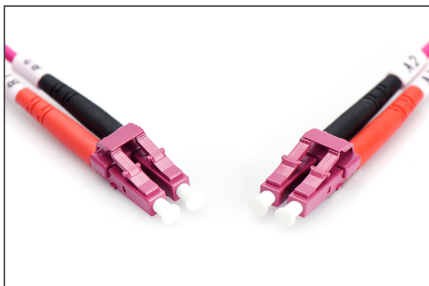
**Future-oriented standards and high-end quality for your network.**

- Duplex cable
- LSOH
- Connector with ceramic ferrule
- Cable diameter 2 mm
- Single packed with test-report
- Color: RAL 4003
- Assortment: Fiber Optic Patch Cables
- Boot: single-color
- Cable diameter: 2 mm

- Cable jacket: LSOH
- Cable type: I-VH 2G50/125μ
- Color cable: erika violet
- Connector 1: LC
- Connector 2: LC
- Fiber class: OM4
- Fiber diameter: 50/125μ
- Mode: Multimode
- Number of connectors side 1: 2
- Number of connectors side 2: 2
- Packaging: DIGITUS Polybag
- Length: 1 m

| Logistics                    |              |             |            |            |             |                 |
|------------------------------|--------------|-------------|------------|------------|-------------|-----------------|
|                              | Number (pcs) | Weight (kg) | Depth (cm) | Width (cm) | Height (cm) | cm <sup>3</sup> |
| Packaging Unit Carton        | 160          | 6.40        | 41.00      | 41.00      | 28.00       | 47,068.00       |
| Packaging Unit Inside        | 20           | 0.80        | 19.00      | 19.00      | 12.00       | 4,332.00        |
| Packaging Unit Single        | 1            | 0.04        | 17.00      | 17.00      | 1.00        | 289.00          |
| Net single without Packaging | 1            | 0.03        | 15.00      | 15.00      | 1.00        | 0.00            |

**More images:**



|                     |                  |      |          |      |
|---------------------|------------------|------|----------|------|
| Part No.            | DK-2533-01-4     |      |          |      |
| Lenght              | 1 m              |      |          |      |
| Cable Type          | Duplex MM 50/125 |      | OM4 LSZH |      |
|                     | END A            |      | END B    |      |
| Connector Type      | LC               |      | LC       |      |
| Insertion Loss (dB) | 0.06             | 0.09 | 0.17     | 0.11 |
| Return Loss (dB)    | 37.7             | 30.1 | 39.5     | 39.7 |
| Q.C.                | PASS             |      |          |      |

